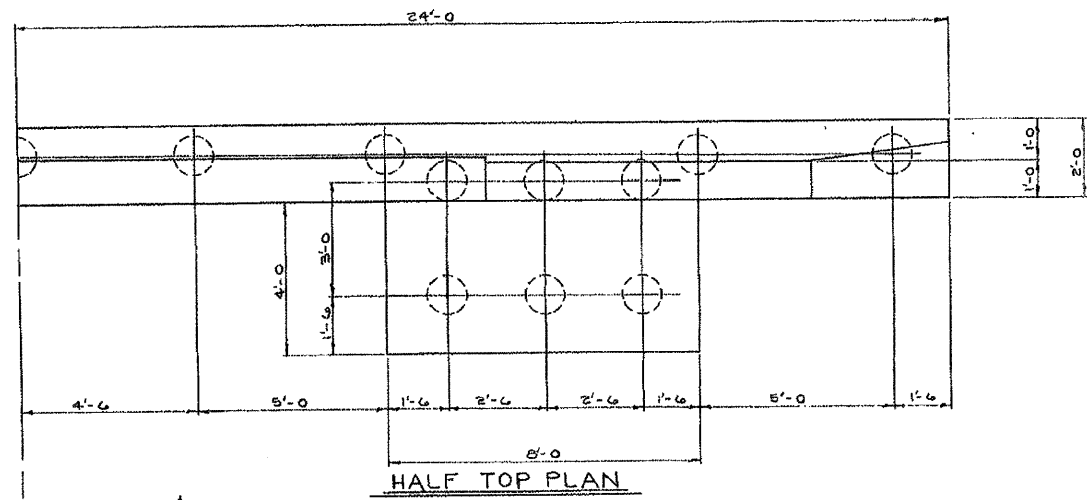
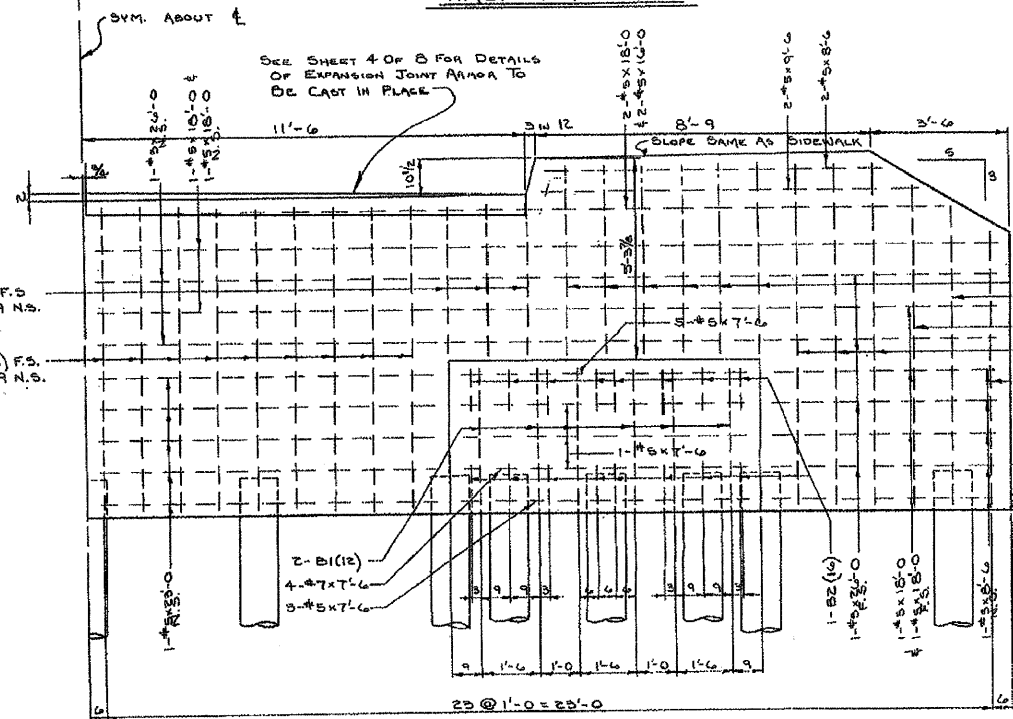


PLAN
 REVISIONS
 PLOTTED
 ALIGNMENT CHECKED
 NOTE BOOK NO.
 CADD FILE NAME

PROFILE
 REVISIONS
 PLOTTED
 GRADES CHECKED
 STRUCTURE NOTATING CHECK
 NOTE BOOK NO.

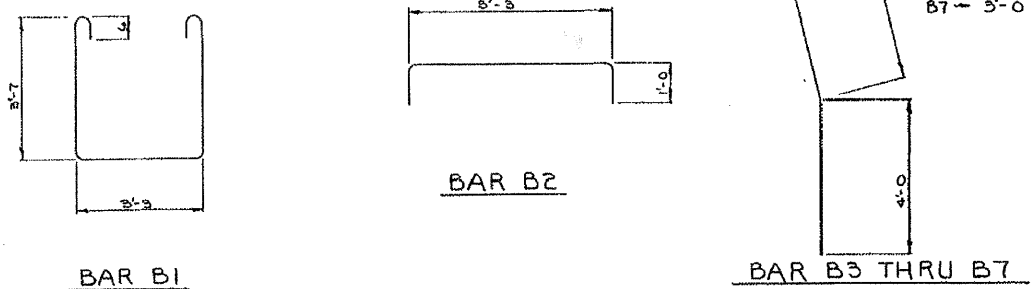


HALF TOP PLAN



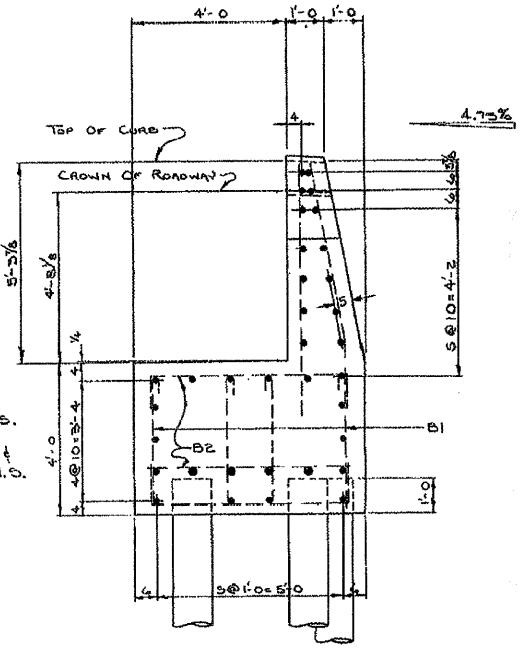
HALF ELEVATION SOUTH ABUTMENT

Scale 1/4" = 1'-0"



BENT BAR DETAILS

Scale - 1/2" = 1'-0"
 NOTE: BARS ARE TO BE BENT AROUND A 4" PIN



END VIEW

STEEL REQUIRED*					
BAR	SIZE	No.	LENGTH	SHAPE	WEIGHT
B1	#5	24	12'-0"	U	300
B2	#5	24	7'-0"	L	234
B3	#5	24	7'-9"	Z	194
B4	#5	18	8'-8"	Z	163
B5	#5	2	8'-3"	Z	17
B6	#5	2	7'-6"	Z	16
B7	#5	2	7'-0"	Z	15
	#5	6	5'-9"	STRAIGHT	36
	#5	12	6'-9"	STRAIGHT	84
	#5	2	7'-0"	STRAIGHT	15
	#5	24	7'-6"	STRAIGHT	188
	#5	18	7'-9"	STRAIGHT	143
	#5	2	8'-0"	STRAIGHT	17
	#5	14	8'-6"	STRAIGHT	124
	#5	6	8'-9"	STRAIGHT	55
	#5	4	9'-6"	STRAIGHT	40
	#5	4	10'-0"	STRAIGHT	67
	#5	20	18'-0"	STRAIGHT	375
	#5	3	23'-0"	STRAIGHT	120
	#5	12	24'-0"	STRAIGHT	325
	#7	8	7'-6"	STRAIGHT	123
TOTAL					2653*

*REINFORCING STEEL TO BE STRUCTURAL OR INTER GRADE

BILL OF MATERIALS -
 38 C.Y. CLASS 'A' CONCRETE
 2653 LBS. REINFORCING STEEL
 8 - 1 1/4" x 1'-6" STONE BOLTS, 1'-0" ROUGH, 3" THREADS
 8 - STD. CUT WASHERS FOR 1 1/4" BOLTS

NOTES
 EXISTING PILING IS TO BE CHECKED TO ENSURE THAT THERE IS SUFFICIENT RESIDUAL CAPACITY PRESENT AND NO DEBRIS SO THAT THEY MAY BE SAFELY REUSED IN THE RECONSTRUCTION. THE REHABILITATION OF EXISTING PILING OR REPLACEMENT OF SAME IS NOT, HOWEVER, INCLUDED IN THIS CONTRACT.

BURLINGTON NORTHERN, INC.
 AURORA DIVISION AURORA LINES
 LA VERGNE TO GRAHAM
 BRIDGE NO. 2621

NEW SOUTH A
 WOOD STREET
 AURORA, ILL.
 5/1/72
 J.A.N.

REVISIONS	
NAME	DATE

CITY OF AURORA
 EXISTING BRIDGE DRAWINGS
 NEW SOUTH ABUTMENT
 SCALE: DATE: SEPTEMBER 2008
 DRAWN BY: CHECKED BY:

CMT
 CRAWFORD MURPHY & TILLY, INC.
 CONSULTING ENGINEERS
 SPRINGFIELD, ILL. ■ AURORA, ILL. ■ ST. LOUIS, MO