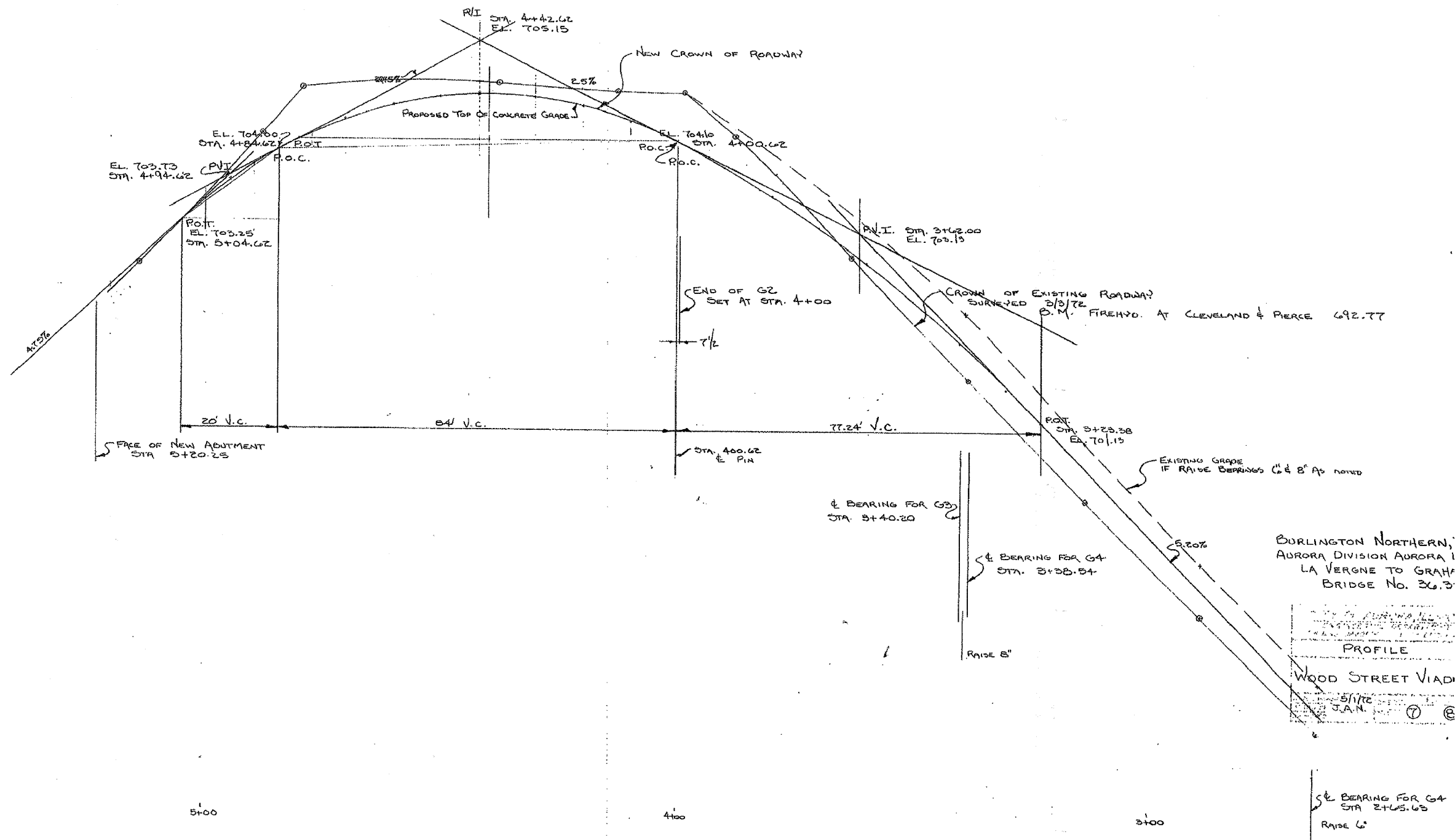


F.A. RTE.	SECTION	COUNTY	TOTAL SHEETS	SHEET NO.
N/A	03-00251-00-BR	KANE	72	59
STA.		TO STA.		
FED. ROAD DIST. NO.		ILLINOIS FED. AID PROJECT		
PROJECT NO. BROS-001(641)				
CONTRACT NO. 63080				

PLAN	DATE	BY
REVISIONS		
NOTED		
ALIGNED		
CHECKED		
DATE		
NO.		

PROFILE	DATE	BY
REVISIONS		
GRADES		
CHECKED		
STRUCTURE		
NOTARY'S		
CHEFID		
NO.		



L:\AURORA\0429808\_Wood\_SiDraw\Sheets\Ex\_Bridge\_Drawings.dgn

REVISIONS	
NAME	DATE

**CMT**  
 CRAWFORD MURPHY & TILLY, INC.  
 CONSULTING ENGINEERS  
 SPRINGFIELD, IL ■ AURORA, IL ■ ST. LOUIS, MO

CITY OF AURORA  
**EXISTING BRIDGE DRAWINGS**  
 PROFILE

SCALE: \_\_\_\_\_  
 DATE: SEPTEMBER 2008

DRAWN BY: \_\_\_\_\_  
 CHECKED BY: \_\_\_\_\_