

STATE OF ILLINOIS  
DEPARTMENT OF TRANSPORTATION  
DIVISION OF HIGHWAYS

# PLANS FOR PROPOSED FEDERAL AID HIGHWAY

**FAU 1263 HAZEL AVENUE OVER W. FORK, N. BRANCH CHICAGO RIVER**  
**FAU 2718 WILMOT ROAD OVER W. FORK, N. BRANCH CHICAGO RIVER**  
**BRIDGE REHABILITATION**  
**SECTION 08-00081-00-BR**  
**PROJECT BRM-9003 (051)**  
**JOB C-91-483-08**  
**VILLAGE OF DEERFIELD**  
**LAKE COUNTY**

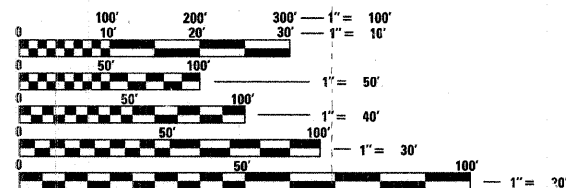
**INDEX OF SHEETS**

FROM SHEET	TO SHEET	DESCRIPTION
1	1	COVER SHEET
2	2	GENERAL NOTES AND STANDARDS
3	3	SUMMARY OF QUANTITIES
4	5	TYPICAL SECTIONS
6	7	ALIGNMENT AND TIES
8	9	DETOUR PLANS
10	11	ROADWAY PLANS AND PROFILE
12	18	WILMOT BRIDGE
19	26	HAZEL BRIDGE

**TRAFFIC DATA**

ADT (2008) = 2300 HAZEL AVE  
ADT (2008) = 6200 WILMOT ROAD

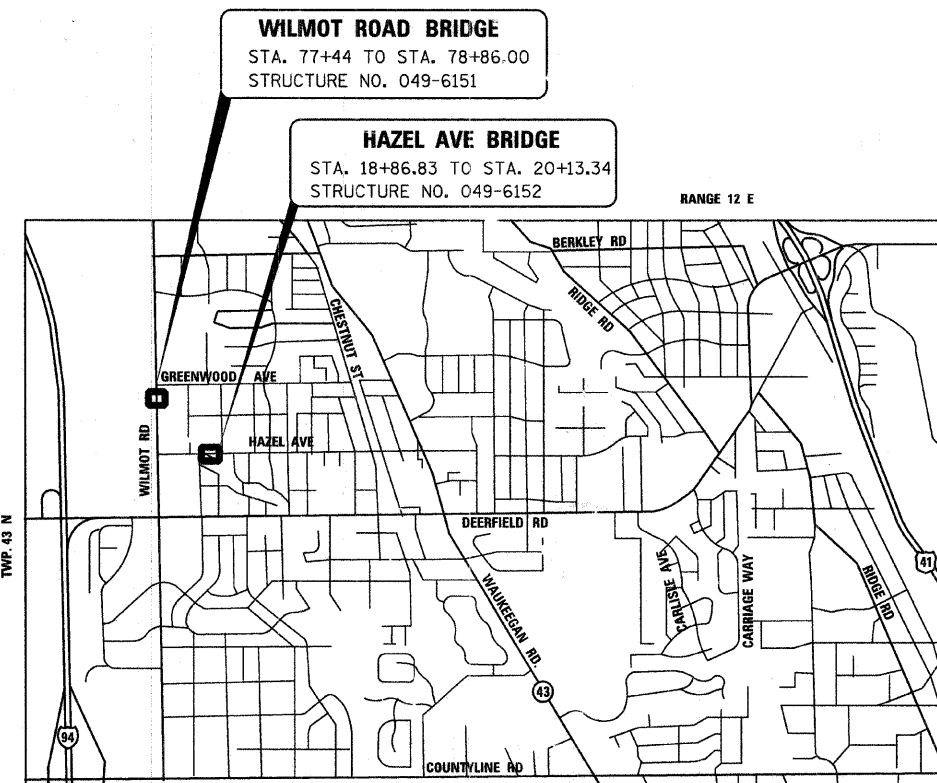
PLAN: 1" = 20'  
PROFILE, HORIZ.: 1" = 20'  
PROFILE, VERT.: 1" = 2'  
CROSS SECTIONS, HORIZ.: 1" = 10'  
CROSS SECTIONS, VERT.: 1" = 5'



FULL SIZE PLANS HAVE BEEN PREPARED USING STANDARD ENGINEERING SCALES. REDUCED SIZED PLANS WILL NOT CONFORM TO STANDARD SCALES. IN MAKING MEASUREMENTS ON REDUCED PLANS, THE ABOVE SCALES MAY BE USED.

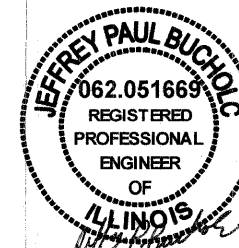
J.U.L.I.E.  
JOINT UTILITY LOCATION INFORMATION FOR EXCAVATION  
1-800-892-0123 OR 811

**CONTRACT NO. 63085**

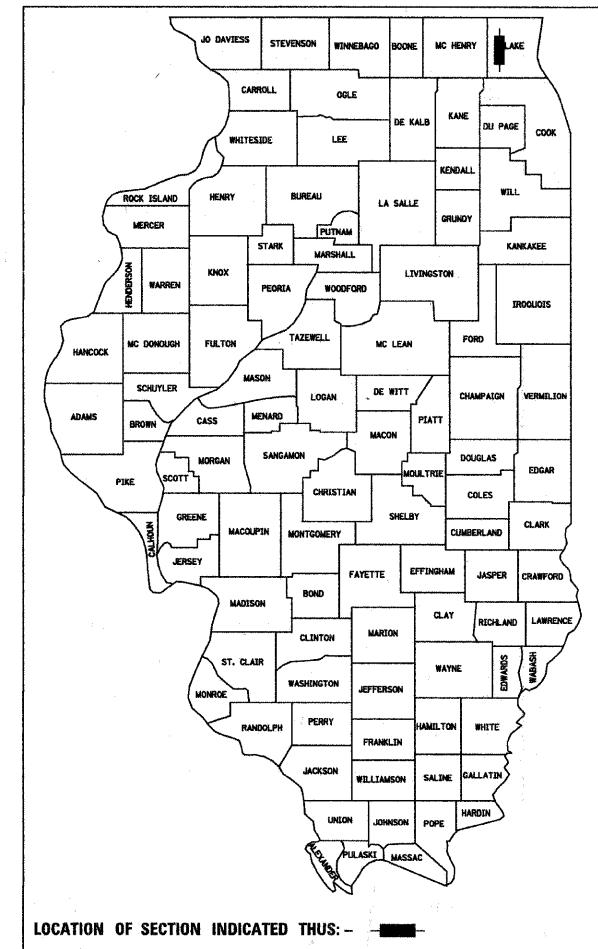


**LOCATION MAP**  
(NOT TO SCALE)

WILMOT ROAD (STRUCTURE NO. 049-6151)  
GROSS LENGTH OF IMPROVEMENT: 142 FEET  
HAZEL AVENUE (STRUCTURE NO. 049-6152)  
GROSS LENGTH OF IMPROVEMENT: 126.5 FEET  
TOTAL NET LENGTH: 268.5 FEET



11/30/2009  
EXPIRES: 10/21/08



LOCATION OF SECTION INDICATED THUS: - ■ -

PRINTED BY THE AUTHORITY  
OF THE STATE OF ILLINOIS

State of Illinois  
Department of Transportation  
Division of Highways

Approved October 21, 2008 *John W. Phillips* P.E.  
Village of Deerfield

Passed NOVEMBER 5, 2008  
*Christopher Holt*  
Releasing for Bid DISTRICT 1 ENGINEER OF LOCAL ROADS AND STREETS  
Based on Limited Review NOVEMBER 5, 2008  
*Diana M. O'Keefe*  
DEPUTY DIRECTOR OF HIGHWAYS, REGION 1 ENGINEER

PLANS PREPARED BY:

**URS**  
100 S WACKER DR, SUITE 500 TEL (312) 939-1000  
CHICAGO IL. 60606 FAX (312) 939-4198