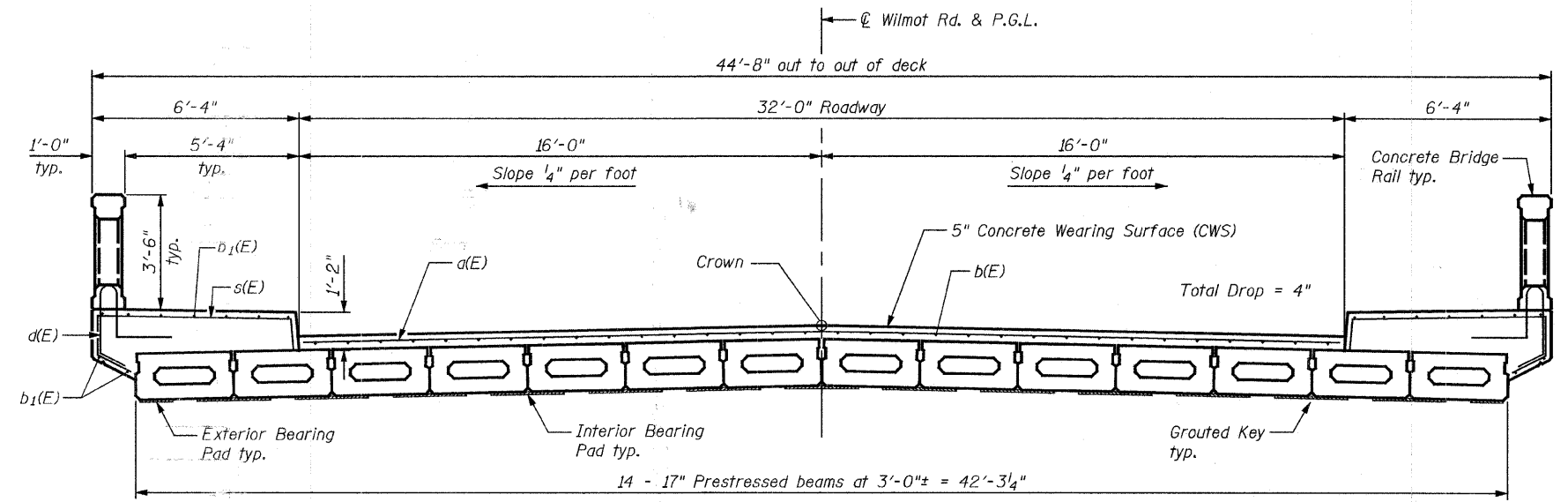
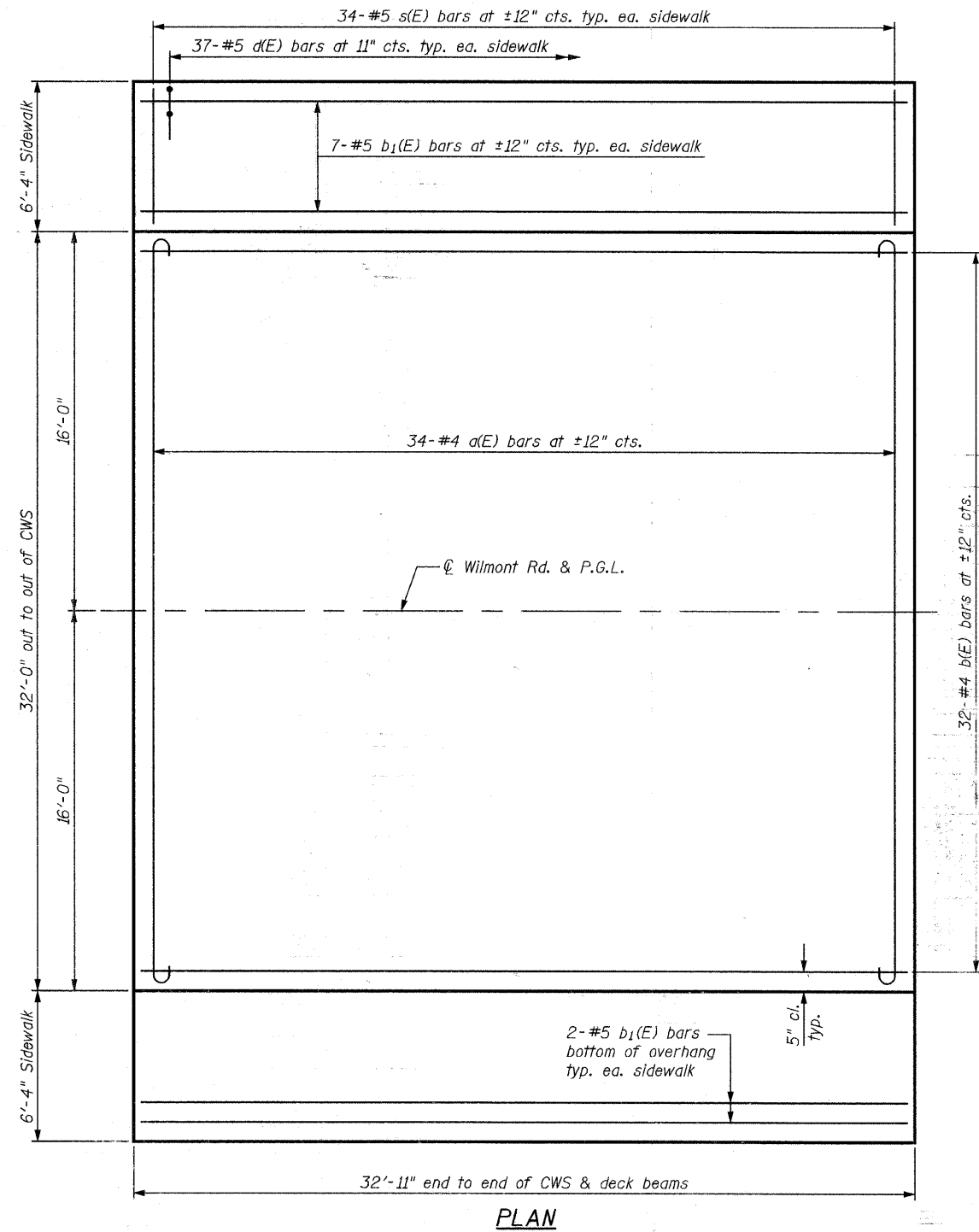
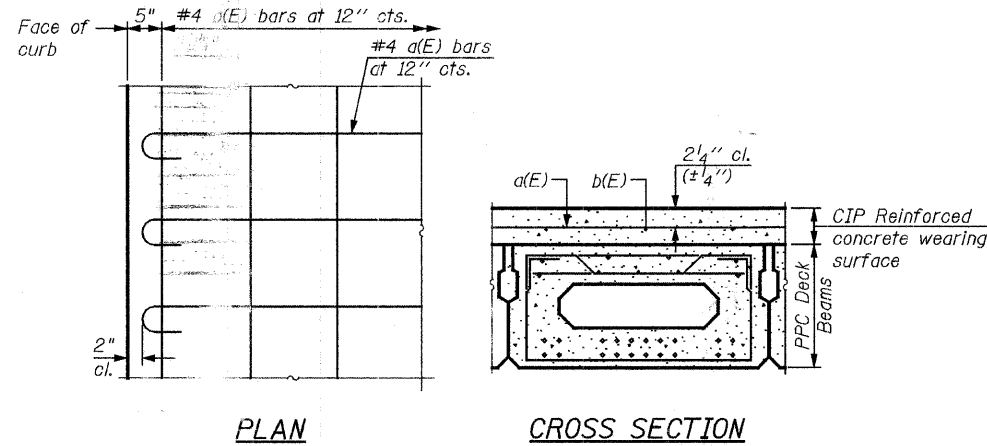


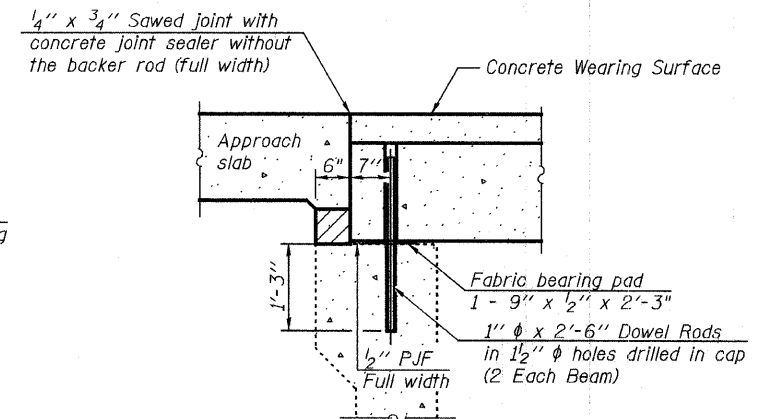
STATE OF ILLINOIS
DEPARTMENT OF TRANSPORTATION



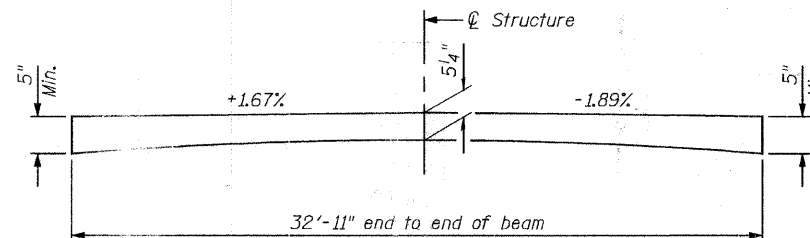
CROSS SECTION
(Looking upstation)



REINFORCED CONCRETE WEARING SURFACE DETAILS



SECTION THRU ABUTMENT



REINFORCED CONCRETE WEARING SURFACE PROFILE

Notes:
After beams have been erected, holes shall be drilled into substructure and anchor dowels placed. Dowel holes shall be filled with non-shrink grout to top of beam and allowed to cure min. 24 hrs. prior to grouting the shear keys.
Burn existing dowel rods flush with existing concrete surface. Grind existing dowel rod smooth and seal with epoxy.
All horizontal dimensions are at right angles to beam ends.
Hatched area to be poured after Precast Prestressed Concrete Deck Beams have been erected. Quantity of concrete included with Concrete Superstructure.
See Sheet Nos. 5 & 6 for beam & bearing pad details.

Notes:
See Sheet No. 4 for superstructure details and Bill of Material.
See Sheet No. 4 for concrete bridge rail reinforcement.

DESIGNED	SHELBIAN
CHECKED	JBUCHOLC
DRAWN	SHELBIAN
CHECKED	JBUCHOLC

URS
100 South Wacker Drive, Suite 500
Chicago, IL 60606
Tel: 312.939.1000
Fax: 312.939.4198

DECK PLAN & SECTION
STRUCTURE NO. 049-6151

SHEET NO. 3 7 SHEETS	F.A.U. RTE.	SECTION	COUNTY	TOTAL SHEETS	SHEET NO.
	2718	08-00081-00-BR	LAKE	26	14
FED. ROAD DIST. NO. - ILLINOIS			FED. AID PROJECT		
CONTRACT NO. 63085					