

INDEX OF SHEETS

SHEET NO. DESCRIPTION

- 1 TITLE SHEET
- 2 SUMMARY OF QUANTITIES
- 3 TRAFFIC SIGNAL MODIFICATION
87th STREET AND CICERO AVENUE
- 4 SCHEDULE OF QUANTITIES, CABLE PLAN, PHASE DESIGNATION
DIAGRAM AND EMERGENCY VEHICLE PREEMPTION SEQUENCE
87th STREET AND CICERO AVENUE
- 5 TRAFFIC SIGNAL MODIFICATION
PULASKI ROAD AND 103rd STREET
- 6 SCHEDULE OF QUANTITIES, CABLE PLAN, PHASE DESIGNATION
DIAGRAM AND EMERGENCY VEHICLE PREEMPTION SEQUENCE
PULASKI ROAD AND 103rd STREET
- 7 TRAFFIC SIGNAL MODIFICATION
CRAWFORD AVENUE AND 107th STREET
- 8 SCHEDULE OF QUANTITIES, CABLE PLAN, PHASE DESIGNATION
DIAGRAM AND EMERGENCY VEHICLE PREEMPTION SEQUENCE
CRAWFORD AVENUE AND 107th STREET
- 9 TRAFFIC SIGNAL MODIFICATION
CRAWFORD AVENUE AND 111th STREET
- 10 SCHEDULE OF QUANTITIES, CABLE PLAN, PHASE DESIGNATION
DIAGRAM AND EMERGENCY VEHICLE PREEMPTION SEQUENCE
CRAWFORD AVENUE AND 111th STREET
- 11 TRAFFIC SIGNAL MODIFICATION
111th STREET AND KOSTNER AVENUE
- 12 SCHEDULE OF QUANTITIES, CABLE PLAN, PHASE DESIGNATION
DIAGRAM AND EMERGENCY VEHICLE PREEMPTION SEQUENCE
111th STREET AND KOSTNER AVENUE
- 13 TRAFFIC SIGNAL MODIFICATION
111th STREET AND JODAN DRIVE /LARAMIE AVE.
- 14 SCHEDULE OF QUANTITIES, CABLE PLAN, PHASE DESIGNATION
DIAGRAM AND EMERGENCY VEHICLE PREEMPTION SEQUENCE
111th STREET AND JODAN DRIVE /LARAMIE AVE.
- 15 TRAFFIC SIGNAL MODIFICATION
87th STREET AND CENTRAL AVENUE
- 16 SCHEDULE OF QUANTITIES, CABLE PLAN, PHASE DESIGNATION
DIAGRAM AND EMERGENCY VEHICLE PREEMPTION SEQUENCE
87th STREET AND CENTRAL AVENUE
- 17 TRAFFIC SIGNAL MODIFICATION
87th STREET AND OAK PARK AVENUE
- 18 SCHEDULE OF QUANTITIES, CABLE PLAN, PHASE DESIGNATION
DIAGRAM AND EMERGENCY VEHICLE PREEMPTION SEQUENCE
87th STREET AND OAK PARK AVENUE
- 19 TRAFFIC SIGNAL MODIFICATION
103rd STREET AND CENTRAL AVENUE
- 20 SCHEDULE OF QUANTITIES, CABLE PLAN, PHASE DESIGNATION
DIAGRAM AND EMERGENCY VEHICLE PREEMPTION SEQUENCE
103rd STREET AND CENTRAL AVENUE
- 21 TRAFFIC SIGNAL MODIFICATION
103rd STREET AND LARAMIE AVE./52ND AVE.
- 22 SCHEDULE OF QUANTITIES, CABLE PLAN, PHASE DESIGNATION
DIAGRAM AND EMERGENCY VEHICLE PREEMPTION SEQUENCE
103rd STREET AND LARAMIE AVE./52ND AVE.
- 23 TRAFFIC SIGNAL MODIFICATION
103rd STREET AND LAWLER AVE./FATHER BURNS DRIVE
- 24 SCHEDULE OF QUANTITIES, CABLE PLAN, PHASE DESIGNATION
DIAGRAM AND EMERGENCY VEHICLE PREEMPTION SEQUENCE
103rd STREET AND LAWLER AVE./FATHER BURNS DRIVE
- 25 TRAFFIC SIGNAL MODIFICATION
SOUTHWEST HIGHWAY AND CENTRAL AVENUE
- 26 SCHEDULE OF QUANTITIES, CABLE PLAN, PHASE DESIGNATION
DIAGRAM AND EMERGENCY VEHICLE PREEMPTION SEQUENCE
SOUTHWEST HIGHWAY AND CENTRAL AVENUE

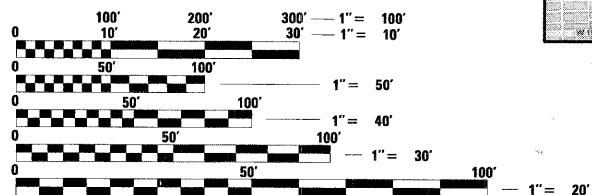
SHEET NO. DESCRIPTION

- 27 TRAFFIC SIGNAL MODIFICATION
RIDGELAND AVENUE AND 91st STREET
- 28 SCHEDULE OF QUANTITIES, CABLE PLAN, PHASE DESIGNATION
DIAGRAM AND EMERGENCY VEHICLE PREEMPTION SEQUENCE
RIDGELAND AVENUE AND 91st STREET
- 29 TRAFFIC SIGNAL MODIFICATION
RIDGELAND AVENUE AND 93rd STREET
- 30 SCHEDULE OF QUANTITIES, CABLE PLAN, PHASE DESIGNATION
DIAGRAM AND EMERGENCY VEHICLE PREEMPTION SEQUENCE
RIDGELAND AVENUE AND 93rd STREET
- 31 TRAFFIC SIGNAL MODIFICATION
CENTRAL AVENUE AND 91st STREET
- 32 SCHEDULE OF QUANTITIES, CABLE PLAN, PHASE DESIGNATION
DIAGRAM AND EMERGENCY VEHICLE PREEMPTION SEQUENCE
CENTRAL AVENUE AND 91st STREET
- 33 TRAFFIC SIGNAL MODIFICATION
CENTRAL AVENUE AND 99th STREET
- 34 SCHEDULE OF QUANTITIES, CABLE PLAN, PHASE DESIGNATION
DIAGRAM AND EMERGENCY VEHICLE PREEMPTION SEQUENCE
CENTRAL AVENUE AND 99th STREET
- 35 TRAFFIC SIGNAL MODIFICATION
103rd STREET AND KILPATRICK AVENUE
- 36 SCHEDULE OF QUANTITIES, CABLE PLAN, PHASE DESIGNATION
DIAGRAM AND EMERGENCY VEHICLE PREEMPTION SEQUENCE
103rd STREET AND KILPATRICK AVENUE
- 37 TRAFFIC SIGNAL MODIFICATION
103rd STREET AND KOSTNER AVENUE
- 38 SCHEDULE OF QUANTITIES, CABLE PLAN, PHASE DESIGNATION
DIAGRAM AND EMERGENCY VEHICLE PREEMPTION SEQUENCE
103rd STREET AND KOSTNER AVENUE
- 39 TRAFFIC SIGNAL MODIFICATION
SOUTHWEST HIGHWAY AND 52nd AVENUE
- 40 SCHEDULE OF QUANTITIES, CABLE PLAN, PHASE DESIGNATION
DIAGRAM AND EMERGENCY VEHICLE PREEMPTION SEQUENCE
SOUTHWEST HIGHWAY AND 52nd AVENUE
- 41 TRAFFIC SIGNAL MODIFICATION
SOUTHWEST HIGHWAY AND 97th STREET
- 42 SCHEDULE OF QUANTITIES, CABLE PLAN, PHASE DESIGNATION
DIAGRAM AND EMERGENCY VEHICLE PREEMPTION SEQUENCE
SOUTHWEST HIGHWAY AND 97th STREET
- 43 TRAFFIC SIGNAL MODIFICATION
SOUTHWEST HIGHWAY AND 99th STREET
- 44 SCHEDULE OF QUANTITIES, CABLE PLAN, PHASE DESIGNATION
DIAGRAM AND EMERGENCY VEHICLE PREEMPTION SEQUENCE
SOUTHWEST HIGHWAY AND 99th STREET
- 45-48 DISTRICT 1 STANDARD TRAFFIC SIGNAL DESIGN DETAILS

LIST OF STATE STANDARDS
STANDARD NO. DESCRIPTION

- STD. 701701-06 URBAN LANE CLOSURE, MULTI-LANE INTERSECTION
- STD. 701901-01 TRAFFIC CONTROL DEVICES
- STD. 857001-01 STANDARD PHASE DESIGNATION DIAGRAMS AND PHASE SEQUENCES
- STD. 880006-01 TRAFFIC SIGNAL MOUNTING DETAILS

J.U.L.I.E.
JOINT UTILITY LOCATION INFORMATION FOR EXCAVATION
1-800-892-0123
OR 811



FULL SIZE PLANS HAVE BEEN PREPARED USING STANDARD
ENGINEERING SCALES. REDUCED SIZED PLANS WILL NOT
CONFORM TO STANDARD SCALES. IN MAKING MEASUREMENTS
ON REDUCED PLANS, THE ABOVE SCALES MAY BE USED.

STATE OF ILLINOIS

DEPARTMENT OF TRANSPORTATION

DIVISION OF HIGHWAYS

PLANS FOR PROPOSED
VILLAGE OF OAK LAWN

EMERGENCY VEHICLE
PREEMPTION PROJECT

DISTRICT 1

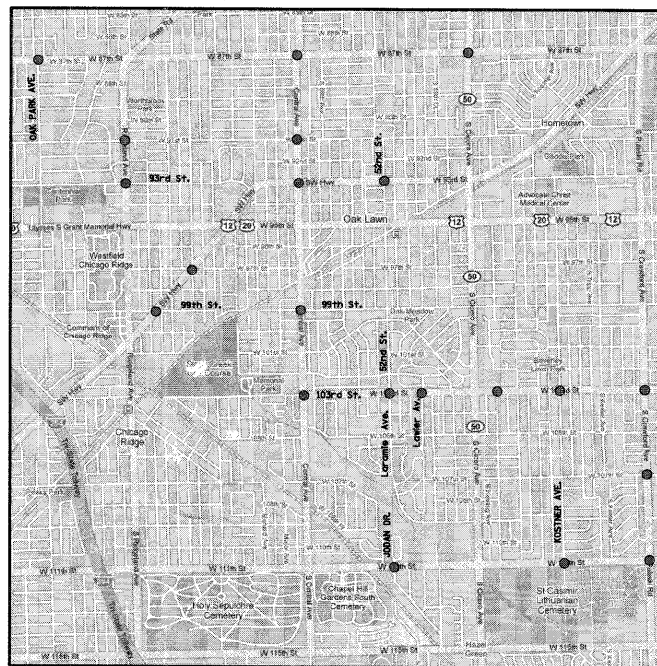
VARIOUS SIGNAL LOCATIONS

FEDERAL PROJECT NO.: HPP-2329 (002)

SECTION 06-00168-02-TL

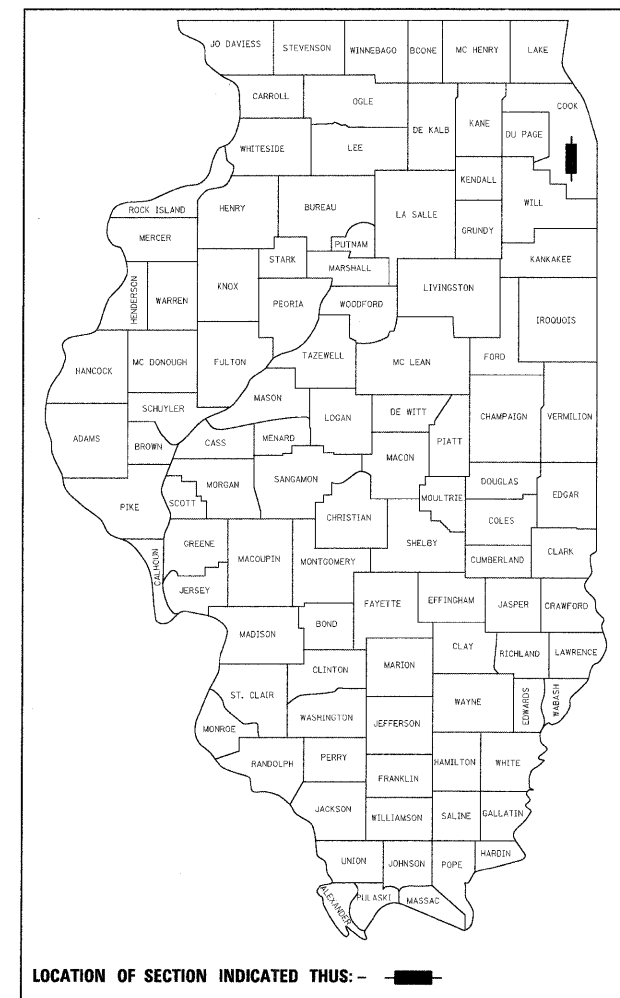
COOK COUNTY

JOB NO: C-91-024-09



LOCATION MAP
N. T. S.

F.A. RTE.	SECTION	COUNTY	TOTAL SHEETS	SHEET NO.
		COOK	48	1
FED. ROAD DIST. NO.	ILLINOIS	CONTRACT NO. 63087		



ILLINOIS DEPARTMENT OF TRANSPORTATION

APPROVED 11/6 2008
[Signature] Oak Lawn Village Engineer
LOCAL AGENCY POSITION

PASSED NOVEMBER 12 2008
[Signature] CHRISTOPHER HOLT
DISTRICT ONE ENGINEER OF LOCAL ROADS & STREETS

RELEASING FOR BID
BASED ON LIMITED REVIEW
NOVEMBER 13 2008
[Signature] Diane M. O'Keefe
DEPUTY DIRECTOR OF HIGHWAYS, REGION ONE ENGINEER

PRINTED BY THE AUTHORITY
OF THE STATE OF ILLINOIS

[Signature] 11/04/08
ENGINEER DATE

GEORGE M. ZIEGLER
ILLINOIS REGISTRATION No. 062-045853
EXPIRATION DATE: 11-30-2009
PROFESSIONAL DESIGN FIRM No.: 184-001742
EXPIRATION DATE: 04-30-2009

CHRISTOPHER B. BURKE ENGINEERING LTD.
9575 West Higgins Road, Suite 600
Rosemont, Illinois 60018 (847) 823-0500

FEDERAL AID DESIGN ENGINEER: PHIL MARCYN
(847) 705-4189

N:\oaklawn\080363\Traffic\civ\080363.dgn 11/4/2008