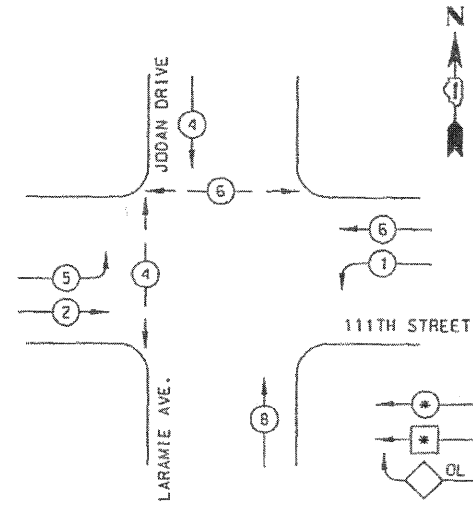
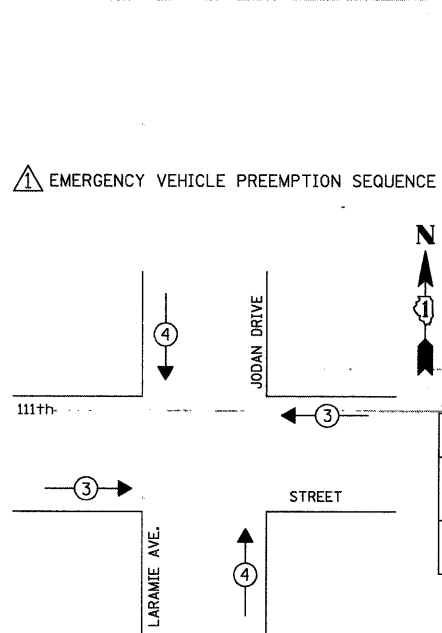


### CONTROLLER SEQUENCE



- LEGEND**
- DUAL ENTRY PHASE
  - SINGLE ENTRY PHASE
  - OVERLAP
  - PEDESTRIAN PHASE
  - NUMBER REFERS TO ASSOCIATED PHASE

### PROPOSED PHASE DESIGNATION DIAGRAM



**PROPOSED EMERGENCY VEHICLE PREEMPTORS**

EMERGENCY VEHICLE PREEMPTOR	3	4
MOVEMENT		

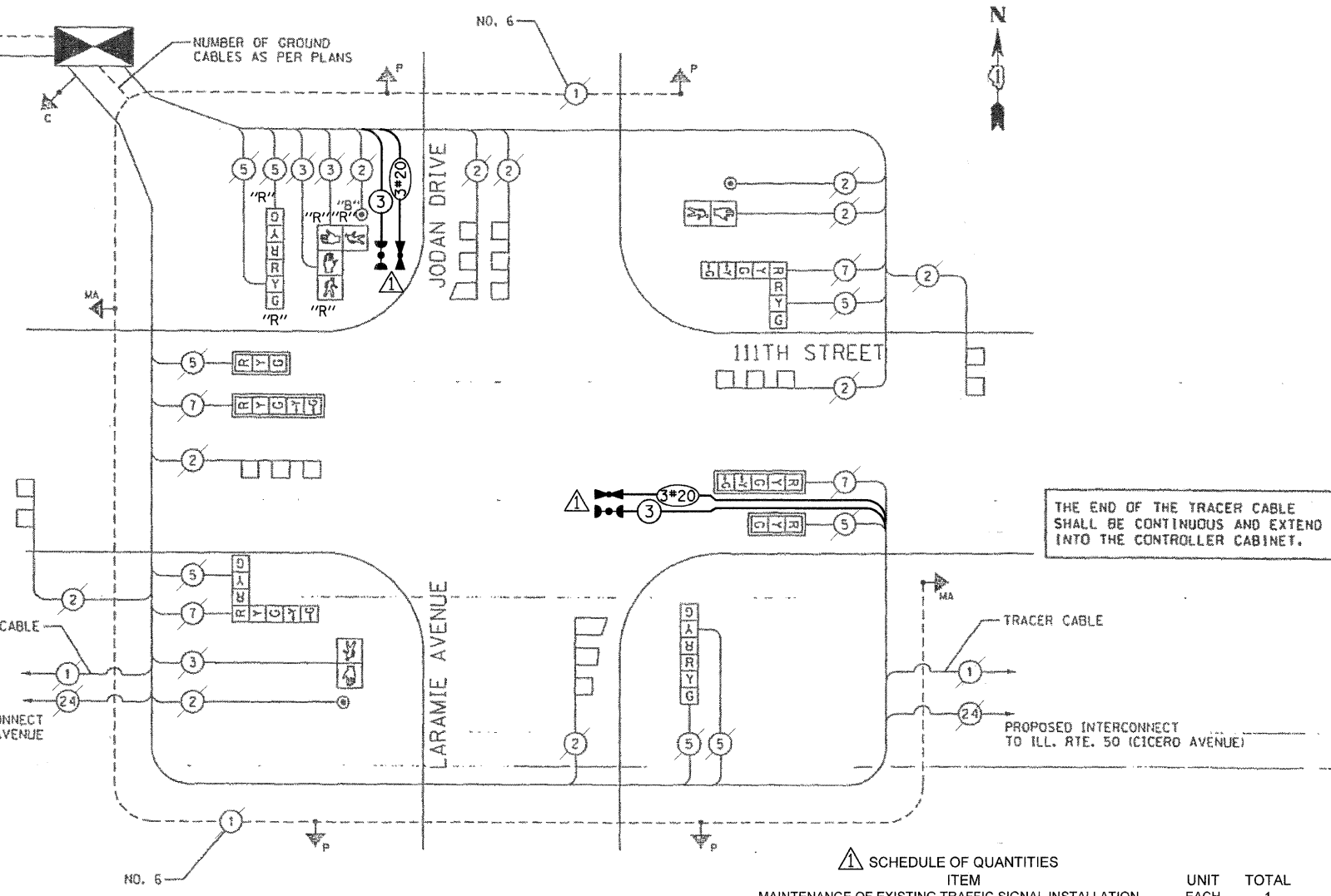
THE END OF THE TRACER CABLE SHALL BE CONTINUOUS AND EXTEND INTO THE CONTROLLER CABINET.

THE EMERGENCY VEHICLE PREEMPTION EQUIPMENT FOR THIS PROJECT SHALL BE "OPTICOM" TO MATCH THE EXISTING SYSTEM AND MUNICIPAL REQUIREMENTS

NOTE: PUSH BUTTON "B" SHALL PLACE A CALL IN PHASES 4 AND 6

### CABLE PLAN LEGEND

- EXISTING**    **PROPOSED**
- 8" (200mm) TRAFFIC SIGNAL SECTION
  - 12" (300mm) TRAFFIC SIGNAL SECTION
  - 12" (300mm) PEDESTRIAN SIGNAL SECTION
  - 12" (300mm) PEDESTRIAN SIGNAL SECTION
  - CONTROLLER CABINET
  - SERVICE INSTALLATION
  - TELEPHONE CONNECTION
  - MAGNETIC DETECTOR
  - EMERGENCY VEHICLE LIGHT DETECTOR
  - CONFIRMATION BEACON
  - PUSHBUTTON DETECTOR
  - VEHICLE DETECTOR, INDUCTION LOOP
  - MICROWAVE VEHICLE SENSOR
  - SIGNAL FACE WITH BACKPLATE, "P" INDICATES PROGRAMMED HEAD
  - RAILROAD CONTROL CABINET
  - ILLUMINATED SIGN "NO LEFT TURN"
  - ILLUMINATED SIGN "NO RIGHT TURN"
  - GROUND ROD AT HANDHOLE (H), DOUBLE HANDHOLE (HH), OR CONTROLLER (C).
  - GROUND ROD AT POST (P), OR MAST ARM POLE (MA).
  - GROUND ROD AT ELECTRIC SERVICE INSTALLATION
  - GROUND CABLE IN CONDUIT NO. 6 SOLID COPPER (GREEN)
  - FIBER OPTIC CABLE IN CONDUIT NO. 62.5/125 2-MM12F SM12F
  - EMERGENCY VEHICLE LIGHT DETECTOR
  - CONFIRMATION BEACON
  - RELOCATE



THE END OF THE TRACER CABLE SHALL BE CONTINUOUS AND EXTEND INTO THE CONTROLLER CABINET.

### SCHEDULE OF QUANTITIES

ITEM	UNIT	TOTAL
MAINTENANCE OF EXISTING TRAFFIC SIGNAL INSTALLATION	EACH	1
ELECTRIC CABLE IN CONDUIT, SIGNAL, NO. 14 3C	FOOT	299
TRAFFIC SIGNAL POST, GALVANIZED STEEL, 18 FT.	EACH	1
LIGHT DETECTOR	EACH	2
LIGHT DETECTOR AMPLIFIER	EACH	1
RELOCATE EXISTING SIGNAL HEAD	EACH	1
RELOCATE EXISTING PEDESTRIAN SIGNAL HEAD	EACH	1
RELOCATE EXISTING PEDESTRIAN PUSH-BUTTON	EACH	1
MODIFY EXISTING CONTROLLER CABINET	EACH	1
REMOVE EXISTING TRAFFIC SIGNAL EQUIPMENT	EACH	1
ELECTRIC CABLE IN CONDUIT, NO. 20 3C, TWISTED, SHIELDED	FOOT	299
TRAFFIC CONTROL AND PROTECTION, STANDARD 701701	EACH	1

RESTORATION OF WORK AREA. RESTORATION OF THE TRAFFIC SIGNAL WORK AREA SHALL BE INCIDENTAL TO THE RELATED PAY ITEM SUCH AS FOUNDATION, CONDUIT, HANDHOLE, TRENCH AND BACKFILL, ETC., AND NO EXTRA COMPENSATION SHALL BE ALLOWED. ALL ROADWAY SURFACES SUCH AS SHOULDERS, MEDIANS, SIDEWALKS, PAVEMENT, ETC. SHALL BE REPLACED IN KIND. ALL DAMAGE TO MOWED LAWNS SHALL BE REPLACED WITH AN APPROVED SOD, AND ALL DAMAGE TO UNMOWED FIELDS SHALL BE SEEDED IN ACCORDANCE WITH STANDARD SPECIFICATIONS 252 AND 250 RESPECTIVELY.

NOTE: THE TRAFFIC SIGNAL CONTROL EQUIPMENT FOR THIS PROJECT SHALL BE "ECONDLITE" TO MATCH THE EXISTING SYSTEM.

**I.D.O.T. TRAFFIC SIGNAL INSTALLATION ELECTRICAL SERVICE REQUIREMENTS**

TYPE	NO. LAMPS	WATTAGE		% OPERATION	TOTAL WATTAGE
		INCAND.	LED		
SIGNAL (RED)	12	135	17	0.50	102.00
(YELLOW)	12	135	25	0.25	75.00
(GREEN)	12	135	15	0.25	45.00
ARROW	8	135	12	0.10	9.60
PED. SIGNAL	4	90	25	1.00	100.00
CONTROLLER	1	100	100	1.00	100.00
ILLUM. SIGN		84		0.05	
FLASHER				0.50	
TOTAL =					431.60

ENERGY COSTS TO: ILLINOIS DEPARTMENT OF TRANSPORTATION  
201W. CENTER CT.  
SCHAUMBURG, IL 60196

ENERGY SUPPLY: CONTACT: KEN YOUNG  
PHONE: 708-235-2328  
COMPANY: COM.ED.

FOUNDATION (DEPTH)	FT. (m)	CABLE SLACK	FT. (m)	VERTICAL	FT. (m)
TYPE A - POST	4 (1.2)	HANDHOLE	6.5 (2.0)	ALL FOUNDATIONS	3.5 (2.0)
D- CONTROLLER	4 (1.2)	DOUBLE HANDHOLE	13 (4.0)	MAST ARM (L) POLE	20' ± L - 2'
E- M. ARM POLE		SIGNAL POST	2 (0.6)	6m ± L - 0.6m ±	
24" (600mm)	10 (3.0)	CONTROLLER CAB.	1 (0.5)	BRACKET MOUNTED	13 (4.0)
30" (750mm)	15 (4.6)	FIBER OPTIC	13 (4.0)	PED. PUSHBUTTON	4 (1.2)
		ELECTRIC SERVICE	1 (0.5)	ELECTRIC SERVICE	13.5 (4.0)
		GROUND CABLE	1 (0.5)	SERVICE TO GROUND	13.5 (4.0)
				POST MOUNTED	6 (1.8)

**INSTALLATION OF EMERGENCY VEHICLE PREEMPTION**

**CHRISTOPHER B. BURKE ENGINEERING LTD.**  
8875 West Higgins Road, Suite 600  
Rosemont, Illinois 60018  
(847) 823-0500

**REVISIONS**

NAME	DATE
CBBEL	6-27-08

ILLINOIS DEPARTMENT OF TRANSPORTATION

**CABLE PLAN & PHASE DESIGNATION DIAGRAM**

111TH STREET & JODAN DRIVE / LARAMIE AVENUE

SCALE: NONE  
DATE: 10/15/02

DRAWN BY: BCK  
DESIGNED BY: R/F  
CHECKED BY: DAD

**CABLE PLAN**  
NOT TO SCALE

N:\okL\win\080363\111th-offic\111th-jodan.dgn