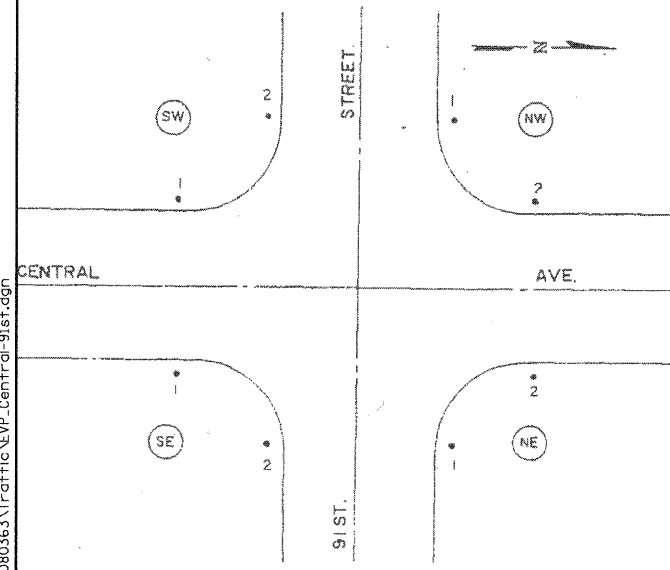
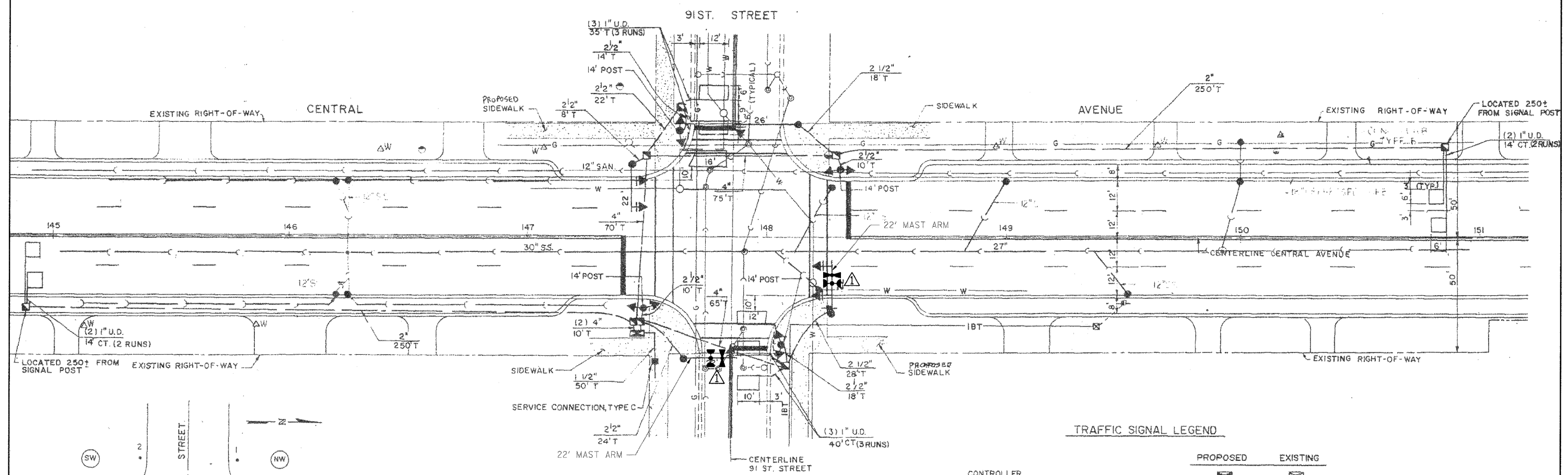
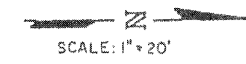


TRAFFIC SIGNAL NOTES

SEE SHEET NO. FOR NOTES



MARK	STATION	OFFSET
NW1	148 + 14	51' ±
NW2	148 + 30	29' ±
NE 1	148 - 06	46' ±
NE 2	148 + 27	32' ±
SW1	147 + 44	31' ±
SW2	147 + 64	46' ±
SE 1	147 + 48	30' ±
SE 2	147 + 65	52' ±

LOCATION TABLE
(MAST ARMS & SIGNAL POSTS)

⚠ CARE IS TO BE TAKEN BY THE CONTRACTOR TO AVOID DAMAGE TO THE EXISTING TRAFFIC SIGNAL CONDUIT, DETECTORS, AND EQUIPMENT. THE CONTRACTOR SHALL REPAIR OR REPLACE ANY DAMAGED CONDUIT OR EQUIPMENT AT NO COST TO THE COUNTY OR VILLAGE.

⚠ THE EMERGENCY VEHICLE PREEMPTION EQUIPMENT FOR THIS PROJECT SHALL BE "OPTICOM" TO MATCH THE EXISTING SYSTEM AND MUNICIPAL REQUIREMENTS

⚠ RESTORATION OF WORK AREA. RESTORATION OF THE TRAFFIC SIGNAL WORK AREA SHALL BE INCIDENTAL TO THE RELATED PAY ITEM SUCH AS FOUNDATION, CONDUIT, HANDHOLE, TRENCH AND BACKFILL, ETC., AND NO EXTRA COMPENSATION SHALL BE ALLOWED. ALL ROADWAY SURFACES SUCH AS SHOULDERS, MEDIANS, SIDEWALKS, PAVEMENT, ETC. SHALL BE REPLACED IN KIND. ALL DAMAGE TO MOWED LAWNS SHALL BE REPLACED WITH AN APPROVED SOD, AND ALL DAMAGE TO UNMOWED FIELDS SHALL BE SEED IN ACCORDANCE WITH STANDARD SPECIFICATIONS 252 AND 250 RESPECTIVELY.

TRAFFIC SIGNAL LEGEND

	PROPOSED	EXISTING
CONTROLLER		
SERVICE INSTALLATION		
SIGNAL HEAD		
SIGNAL HEAD WITH BACKPLATE		
SIGNAL POST		
MAST ARM ASSEMBLY AND POLE, STEEL		
MANHOLE		
HEAVY DUTY HANDHOLE		
DOUBLE HANDHOLE		
G.S. CONDUIT IN TRENCH OR PUSHED		
DETECTOR LOOP		
PEDESTRIAN PUSHBUTTON DETECTOR		
SIGNAL HEAD, PEDESTRIAN		
EMERGENCY VEHICLE LIGHT DETECTOR		
CONFIRMATION BEACON		

⚠ INSTALLATION OF EMERGENCY VEHICLE PREEMPTION
CHRISTOPHER B. BURKE ENGINEERING LTD.
 9575 West Higgins Road, Suite 600
 Rosemont, Illinois 60018
 (847) 823-0500

COUNTY OF COOK
 DEPARTMENT OF HIGHWAYS
 McDONOUGH ASSOCIATES, INC.
 ENGINEERS ARCHITECTS

TRAFFIC SIGNAL INSTALLATION PLAN
 CENTRAL AVENUE AT 91ST STREET

COMPUTED	RKT	APPROVED	18
DRAWN	SYR	CHEF ENGINEER OF DESIGN	
CHECKED	RKT		

UPDATED BY CCHD 7/97

N:\Vokl\lwn\080363\T\office\VEP_Centr-91st.dgn