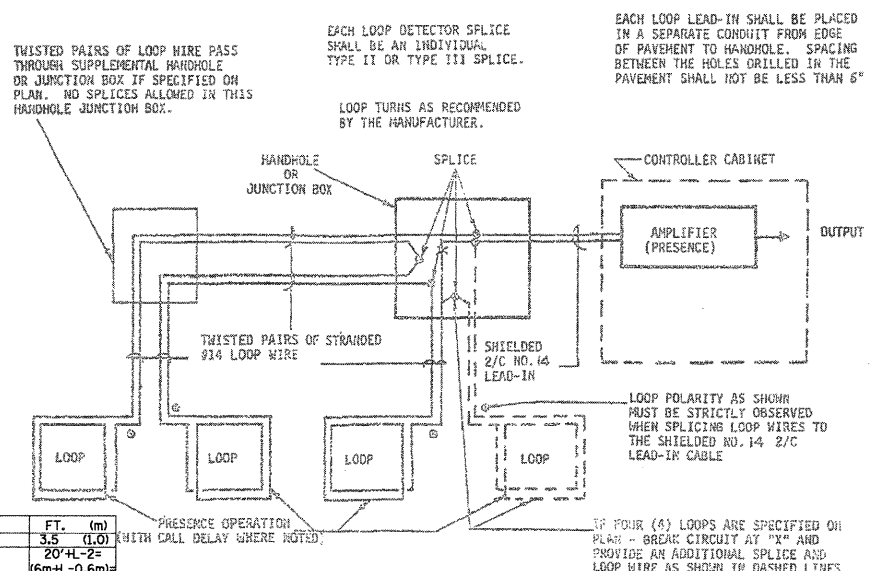


EMERGENCY VEHICLE PREEMPTOR	3	4
MOVEMENT	← →	↑ ↓

TYPE	NO. OF LAMPS	WATTAGE X INCAND. LED	% OPERATION	TOTAL WATTAGE
SIGNAL (RED)	8	135	0.50	540.00
(YELLOW)	8	135	0.25	270.00
(GREEN)	8	135	0.25	270.00
ARROW	4	135	0.10	54.00
PED. SIGNAL	8	90	1.00	720.00
CONTROLLER	1	100	1.00	100.00
ILLUM. SIGN	-	252	0.05	-
FLASHER	-	-	0.50	-
ENERGY COSTS TO:	TOTAL =			1954.00

NOTE: THE TRAFFIC SIGNAL CONTROLLER EQUIPMENT FOR THIS PROJECT SHALL BE "ECONOLITE" TO MATCH THE EXISTING ADJACENT SYSTEM.

FOUNDATION (DEPTH)	FT. (m)	CABLE SLACK	FT. (m)	VERTICAL	FT. (m)
TYPE A - POST	4 (1.2)	HANDHOLE	6.5 (2.0)	ALL FOUNDATIONS	3.5 (1.0)
D - CONTROLLER	4 (1.2)	DOUBLE HANDHOLE	13 (4.0)	MAST ARM (L) POLE	20' HL-2=
E - M. ARM POLE	-	SIGNAL POST	2 (1.0)	BRACKET MOUNTED	13 (4.0)
24" (600mm)	10 (3.0)	CONTROLLER CAB.	1 (0.5)	PED. PUSHBUTTON	4 (1.2)
30" (750mm)	15 (4.6)	FIBER OPTIC	13 (4.0)	ELECTRIC SERVICE	13.5 (4.1)
36" (900mm)	15 (4.6)	ELECTRIC SERVICE	1 (0.5)	SERVICE TO GROUND	13.5 (4.1)
		GROUND CABLE	1 (0.5)	POST MOUNTED	6 (1.8)



**CABLE PLAN**

NOTE: PUSHBUTTON "A" SHALL PLACE A CALL IN PHASES 2 AND 4. PUSHBUTTON "B" SHALL PLACE A CALL IN PHASES 4 AND 6. PUSHBUTTON "C" SHALL PLACE A CALL IN PHASES 6 AND 8. PUSHBUTTON "D" SHALL PLACE A CALL IN PHASES 2 AND 8.

**SCHEDULE OF QUANTITIES**

ITEM	UNIT	TOTAL
MAINTENANCE OF EXISTING TRAFFIC SIGNAL INSTALLATION	EACH	1
FULL-ACTUATED CONTROLLER IN EXISTING CABINET, SPECIAL	EACH	1
ELECTRIC CABLE IN CONDUIT, SIGNAL, NO. 14 3C	FOOT	260
LIGHT DETECTOR	EACH	2
LIGHT DETECTOR AMPLIFIER	EACH	1
MODIFY EXISTING CONTROLLER CABINET	EACH	1
REMOVE EXISTING TRAFFIC SIGNAL EQUIPMENT	EACH	1
ELECTRIC CABLE IN CONDUIT, NO. 20 3C, TWISTED, SHIELDED	FOOT	260
TRAFFIC CONTROL AND PROTECTION, STANDARD 701701	EACH	1

RESTORATION OF WORK AREA. RESTORATION OF THE TRAFFIC SIGNAL WORK AREA SHALL BE INCIDENTAL TO THE RELATED PAY ITEM SUCH AS FOUNDATION, CONDUIT, HANDHOLE, TRENCH AND BACKFILL, ETC., AND NO EXTRA COMPENSATION SHALL BE ALLOWED. ALL ROADWAY SURFACES SUCH AS SHOULDERS, MEDIANS, SIDEWALKS, PAVEMENT, ETC. SHALL BE REPLACED IN KIND. ALL DAMAGE TO MOWED LAWNS SHALL BE REPLACED WITH AN APPROVED SOD, AND ALL DAMAGE TO UNMOWED FIELDS SHALL BE SEEDING IN ACCORDANCE WITH STANDARD SPECIFICATIONS 252 AND 250 RESPECTIVELY.

THE EMERGENCY VEHICLE PREEMPTION EQUIPMENT FOR THIS PROJECT SHALL BE "OPTICOM" TO MATCH THE EXISTING SYSTEM AND MUNICIPAL REQUIREMENTS

INSTALLATION OF EMERGENCY VEHICLE PREEMPTION  
**CHRISTOPHER B. BURKE ENGINEERING LTD.**  
 3575 West Higgins Road, Suite 600  
 Rosemont, Illinois 60018  
 (847) 823-0500