

F.A. RTE.	SECTION	COUNTY	TOTAL SHEETS	SHEET NO.
..	**	***	14	4
STA. _____		TO STA. _____		
FED. ROAD DIST. NO. ILLINOIS FED. AID PROJECT				

* FAP 5 & FAI 39 (US 20 Bus. & I-39)
 ** Section D2 Bridge Painting 2009-1
 *** Stephenson & Winnebago Counties

TRAFFIC CONTROL PLAN

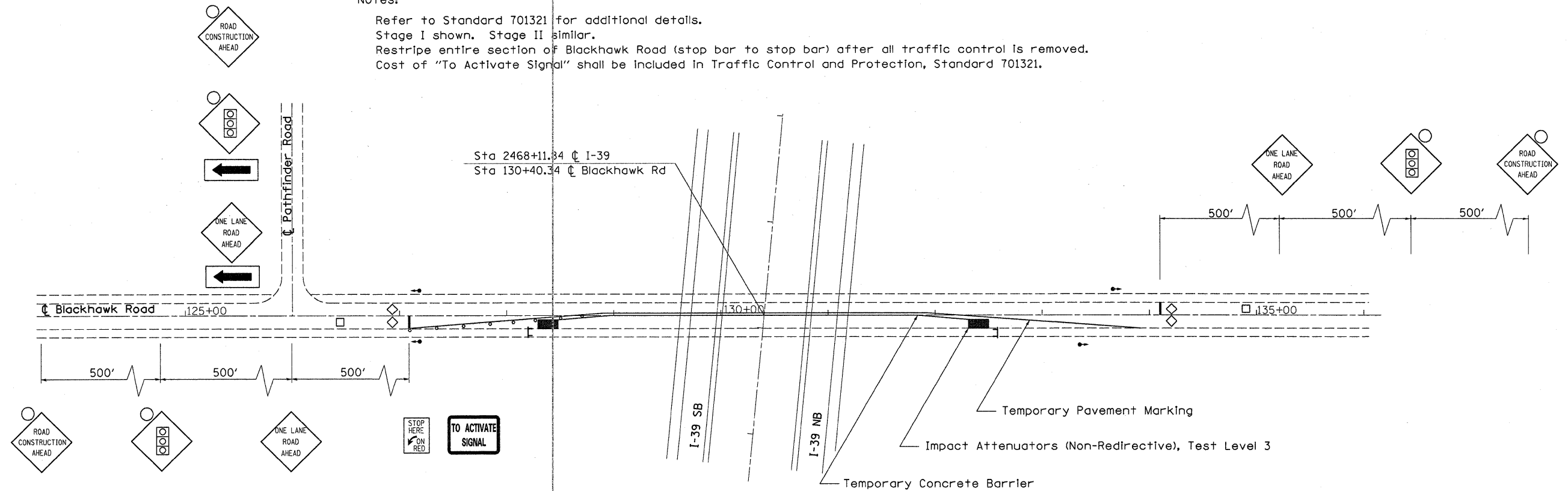
Blackhawk Road

No Scale



Notes:

Refer to Standard 701321 for additional details.
 Stage I shown. Stage II similar.
 Restripe entire section of Blackhawk Road (stop bar to stop bar) after all traffic control is removed.
 Cost of "To Activate Signal" shall be included in Traffic Control and Protection, Standard 701321.



Temporary Concrete Barrier Wall

	Feet
Stage I	
Tangent	287.50
2 Tapers @ 50' Each	100
Total	387.50

Relocate Temporary Concrete Barrier Wall

	Feet
Stage I	
2 Tapers @ 50' Each	100
Total	100

TRAFFIC CONTROL AND PROTECTION, STANDARD 701321

	Each
Entire Project	1
Total	1

TEMPORARY BRIDGE TRAFFIC SIGNALS

	Each
Entire Project	1
Total	1

Pavement Marking Removal

	Sq Ft
Skip Dash	25
Total	25

Temporary Pavement Marking

	Feet
Stage I	
White Edge Line 4"	680
Stage II	
White Edge Line 4"	680
Total	1360

Work Zone Pavement Marking Removal

	Sq Ft
Stage I	227
Stage II	227
Total	454

Thermoplastic Pavement Marking - Line 4"

	Foot
Edge Line	1450
Centerline Skip Dash	725
Total	2175

Impact Attenuators, Temporary

	Each
Stage I	2
Total	2

Impact Attenuators, Relocate

	Each
Stage II	2
Total	2