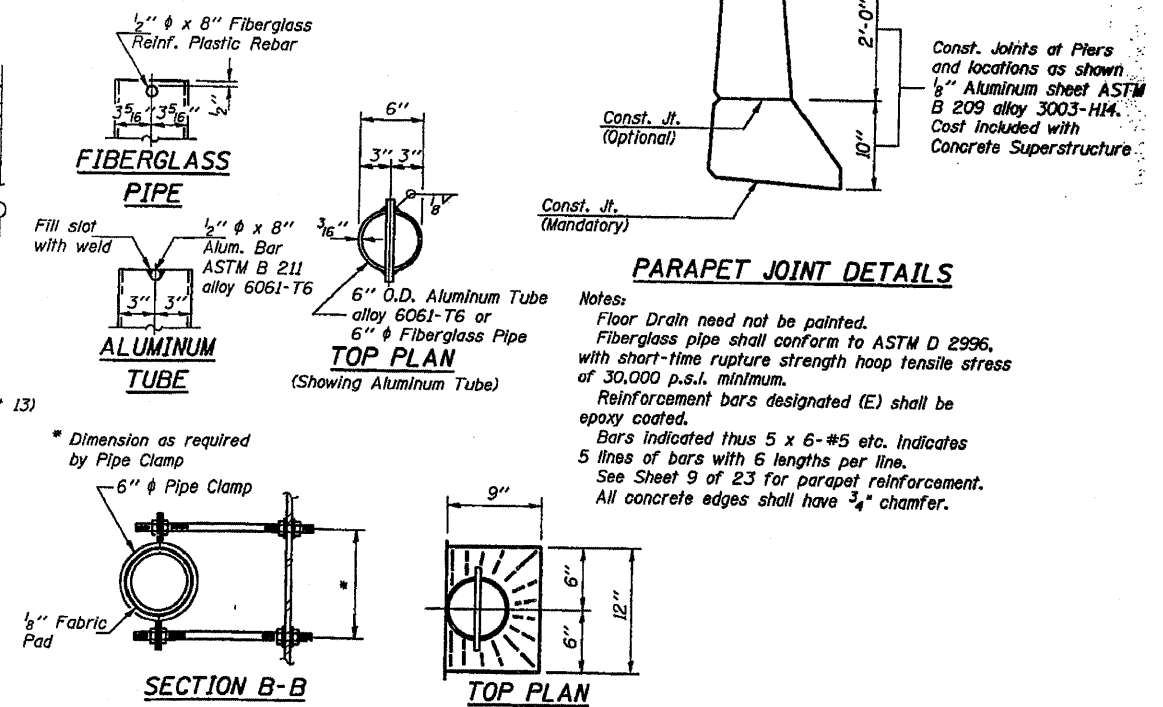
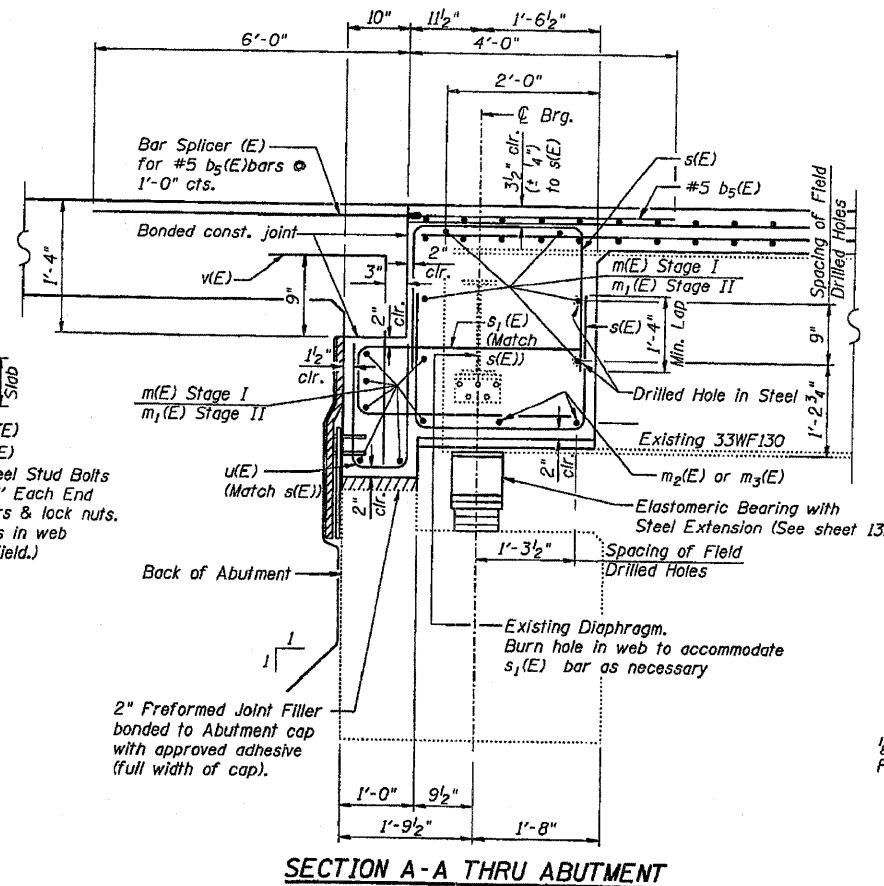
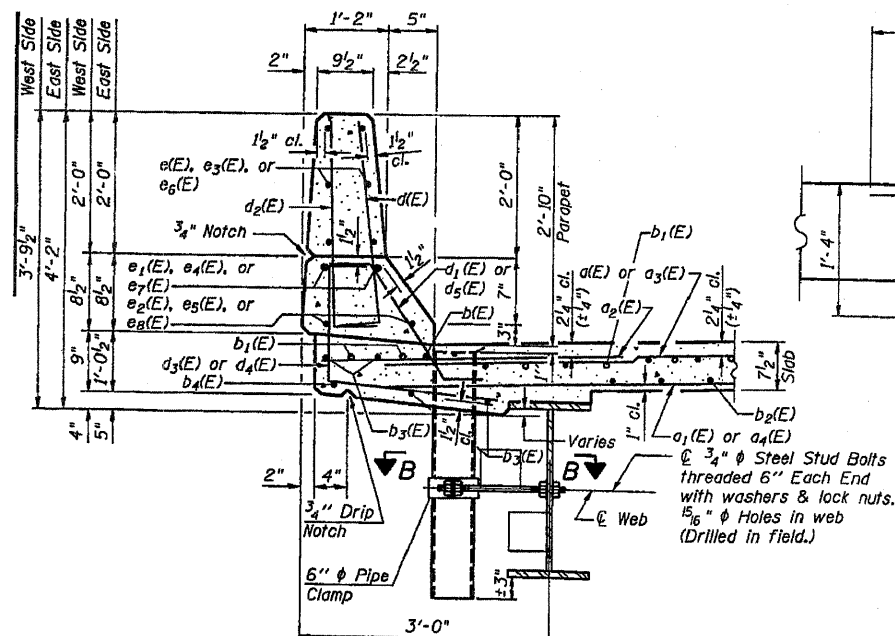
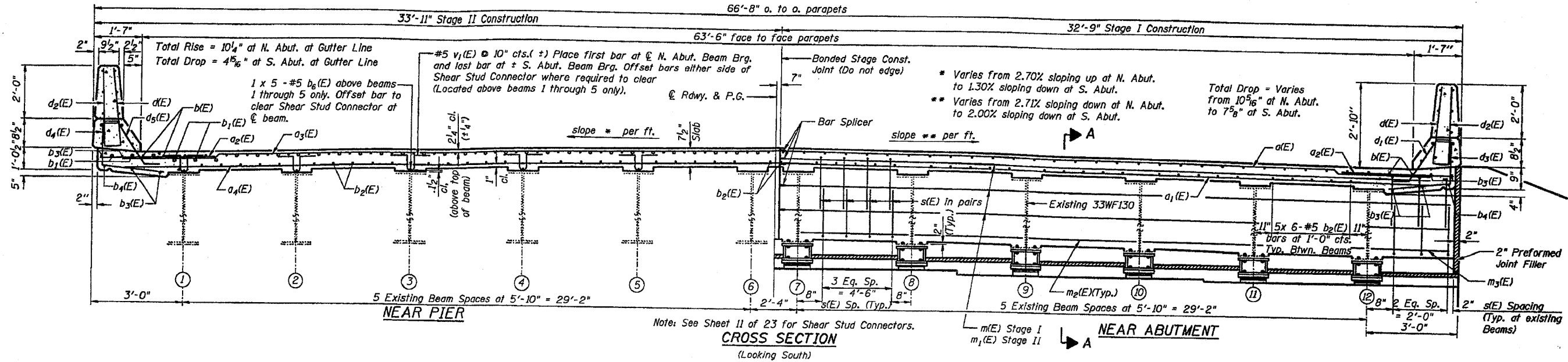


F.A. RTE.	SECTION	COUNTY	TOTAL SHEETS	SHEET NO.
---	---	---	14	6
STA. TO STA.		ILLINOIS FED. AID PROJECT		

STATE OF ILLINOIS  
DEPARTMENT OF TRANSPORTATION

\* FAP 5 & FAI 39 (US 20 Bus. & I-39)  
\*\* Section D2 Bridge Painting 2009-1  
\*\*\* Stephenson & Winnebago Counties



DESIGNED	L.C.M.	20
CHECKED	S.D.K.	EXAMINED
DRAWN	T.L.N.	PASSED
CHECKED	S.D.K.	ENGINEER OF BRIDGE DESIGN
		ENGINEER OF BRIDGES AND STRUCTURES

PLOT DATE = Tue Oct 14 11:27:31 2008  
FILE NAME = P:\PRINTING\64E62\PLANS.dgn  
PLOT SCALE = 52.9412 / 1 IN.  
USER NAME = jlrackj

Existing Plans SN 089-0008 FOR INFORMATION ONLY