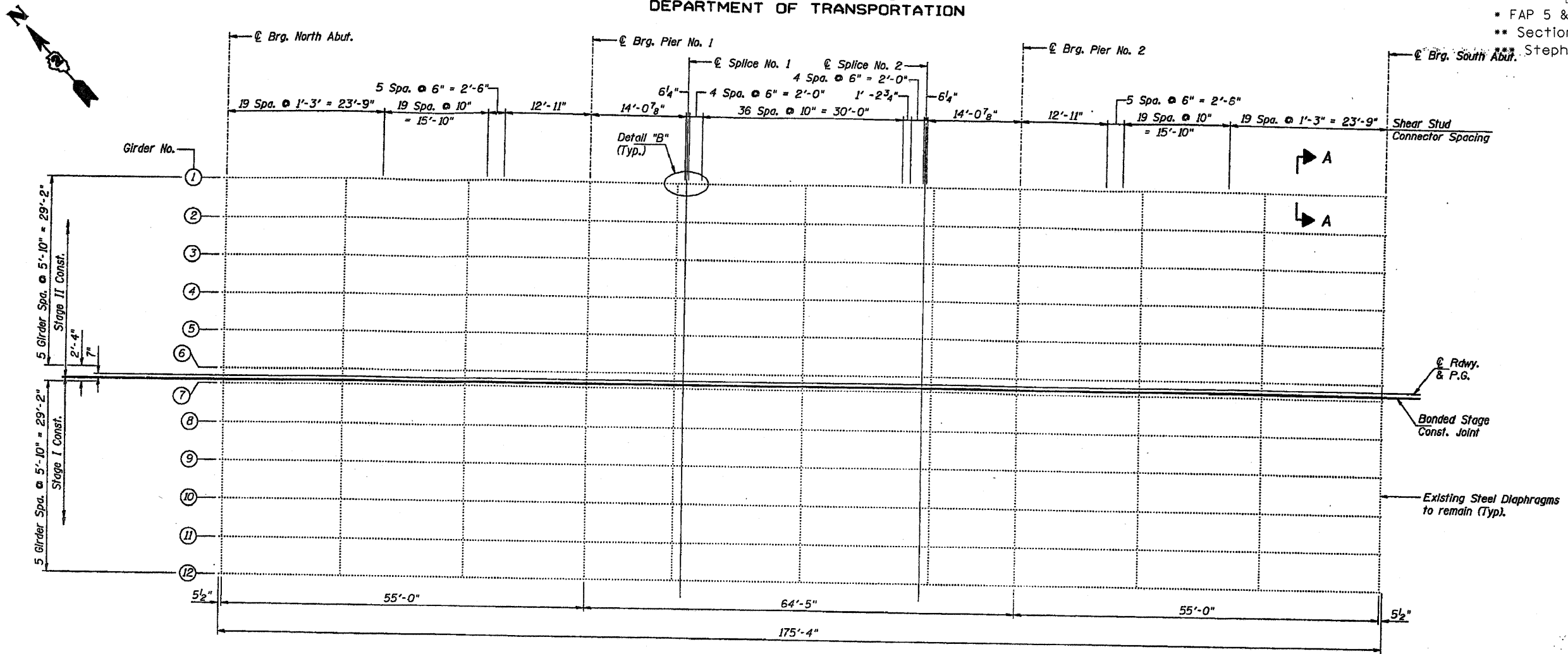


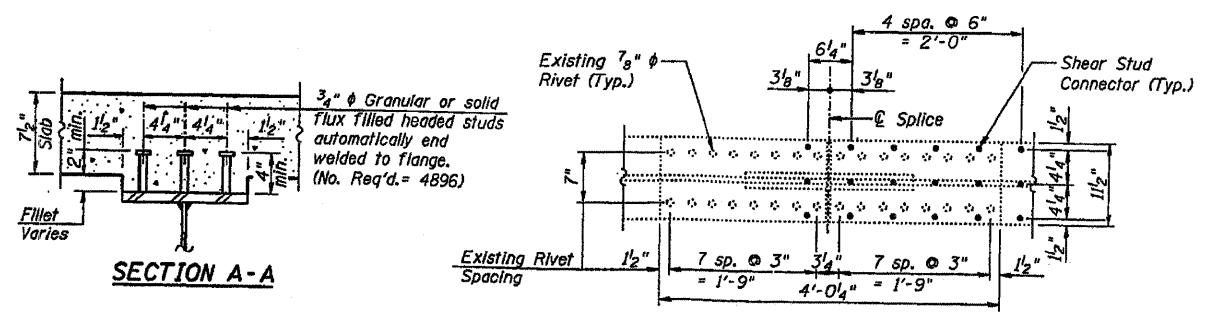
F.A. RTE.	SECTION	COUNTY	TOTAL SHEETS	SHEET NO.
..-2-	..-2-	..-2-	..-14-	..-7-
STA. _____		TO STA. _____		
FED. ROAD DIST. NO. _____ ILLINOIS FED. AID PROJECT				

STATE OF ILLINOIS
DEPARTMENT OF TRANSPORTATION

* FAP 5 & FAI 39 (US 20 Bus. & I-39)
** Section D2 Bridge Painting 2009-1
*** Stephenson & Winnebago Counties



FRAMING PLAN



SECTION A-A

DETAIL B

All Beams are W33x130.
All Diaphragms are W16x36.

DESIGNED	LCM	20
CHECKED	SDK	EXAMINED
DRAWN	T.L.N.	PASSED
CHECKED	SDK	ENGINEER OF BRIDGE DESIGN
		ENGINEER OF BRIDGE AND STRUCTURES

Existing Plans SN 089-0008 FOR INFORMATION ONLY

PLOT DATE = Tue, Oct 14 11:27:40 2008
FILE NAME = P:\DRAWING\64E62\PLAN.dgn
PLOT SCALE = 52:9412 / IN.
USER NAME = llnedj