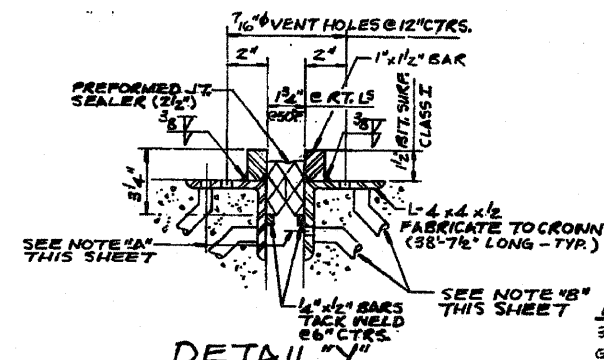
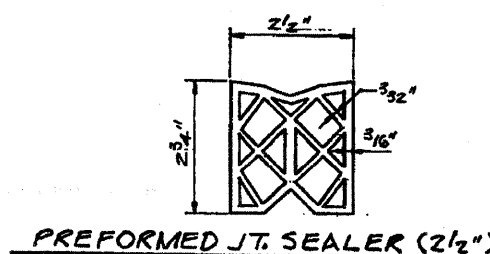
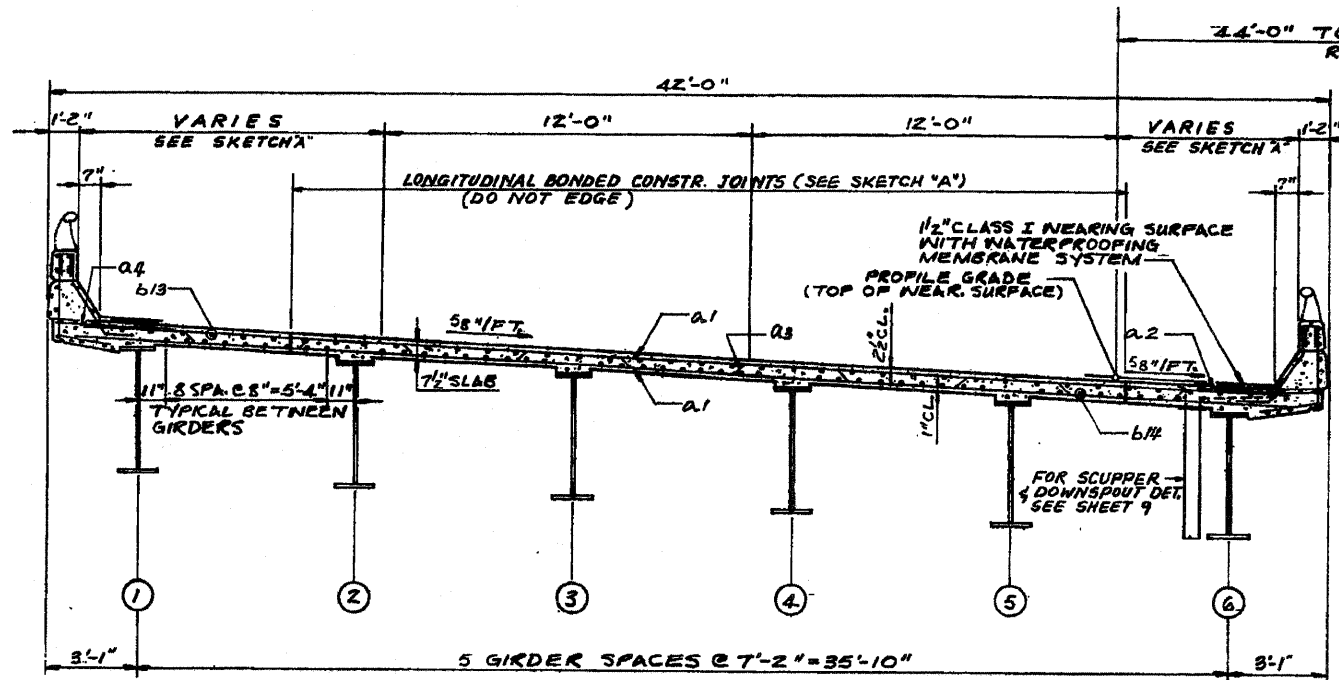
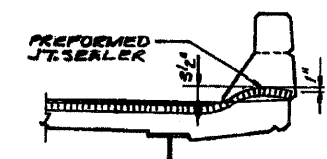
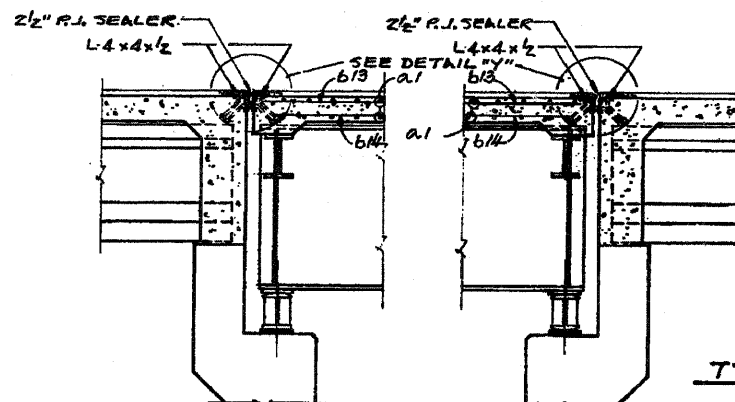


F.A. RTE.	SECTION	COUNTY	TOTAL SHEETS	SHEET NO.
..	..	..	..	..
STA. ....	TO STA. ....		..	..
FED. ROAD DIST. NO. ... ILLINOIS FED. AID PROJECT				

- \* FAP 5 & FAI 39 (US 20 Bus. & I-39)
- \*\* Section D2 Bridge Painting 2009-1
- \*\*\* Stephenson & Winnebago Counties

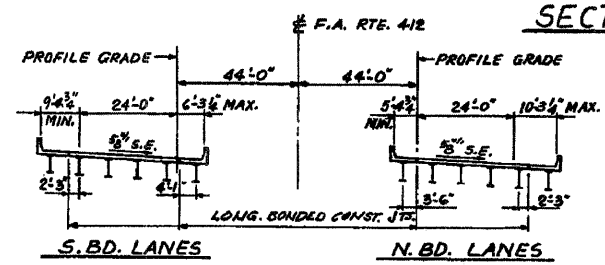


- NOTE "B"**  
 SEE NOTE "B" THIS SHEET
- NOTE "C"**  
 3/4\"/>
- NOTE "A"**  
 7/16\"/>



TYPICAL END OF SEALER TREATMENT

- NOTES:**  
 FOR STEEL FRAMING PLAN SEE SHEET 13.  
 FOR DECK REINFORCEMENT PLAN SEE SHEET 7.



SKETCH "A"

Existing Plans SN 101-0142, 0143 FOR INFORMATION ONLY