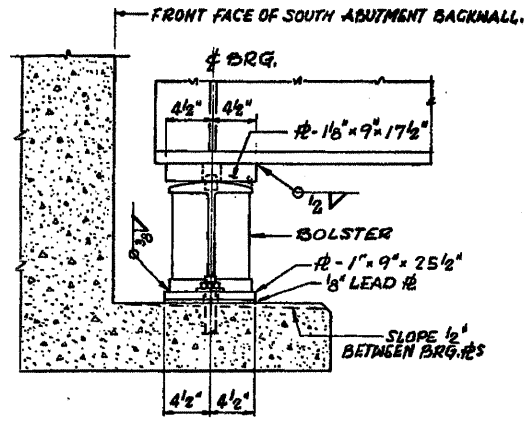
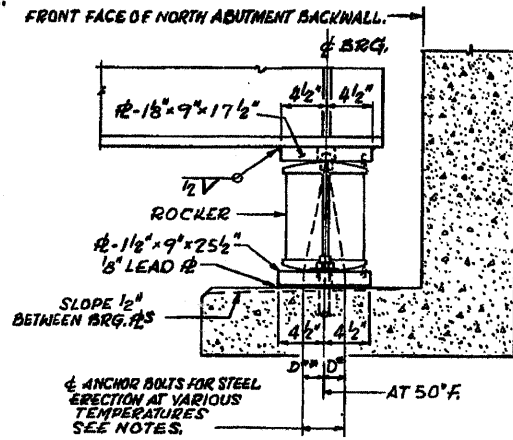


F.A. RTE.	SECTION	COUNTY	TOTAL SHEETS	SHEET NO.
...	...	...	14	13
STA. _____		TO STA. _____		
FED. ROAD DIST. NO. ILLINOIS FED. AID PROJECT				

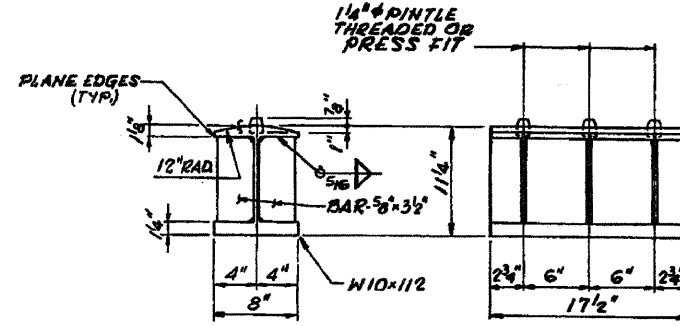
\* FAP 5 & FAI 39 (US 20 Bus. & I-39)  
 \*\* Section D2 Bridge Painting 2009-1  
 \*\*\* Stephenson & Winnebago Counties



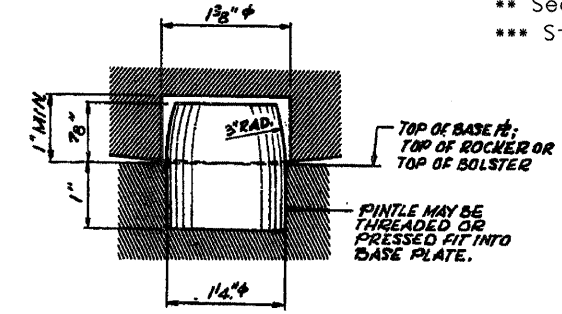
ELEVATION



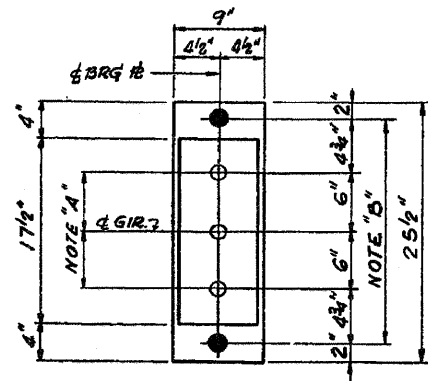
ELEVATION



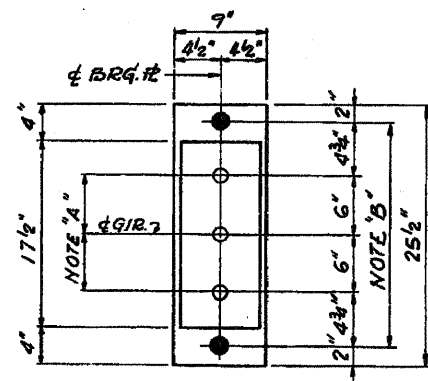
BOLSTER DETAIL



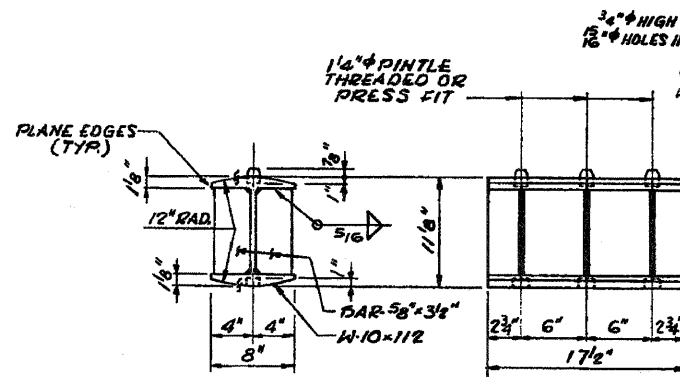
PINDELE



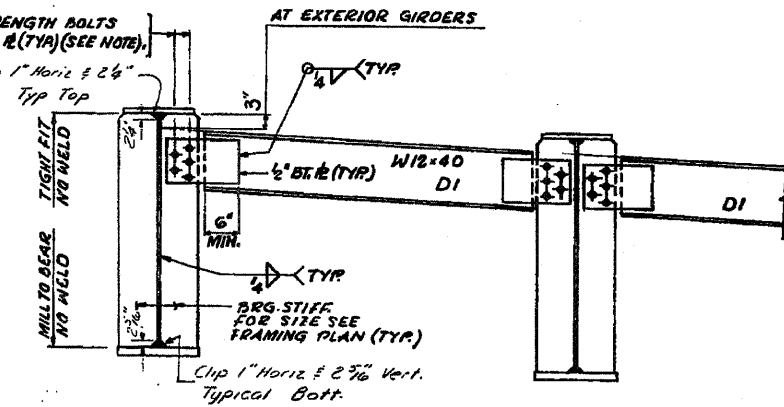
PLAN AT SOUTH ABUTMENT



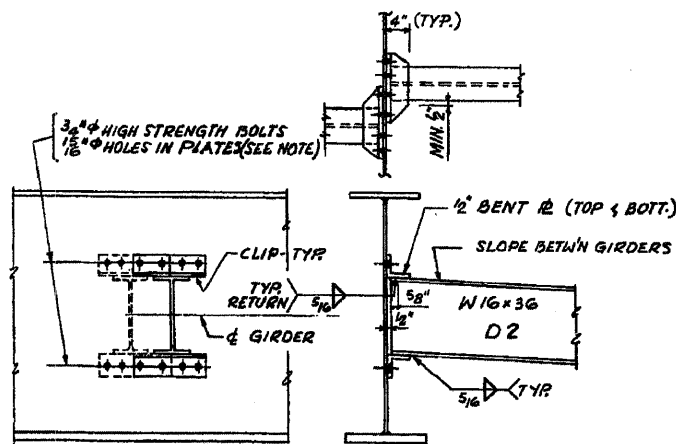
PLAN AT NORTH ABUTMENT



ROCKER DETAIL



DIAPHRAGM D1



DIAPHRAGM D2

NOTES:

NOTE "A"  
 1 3/8" DIAMETER HOLES - 1" DEEP IN TOP PLATE FOR PINDELES. THREAD OR PRESSED FIT PINDELES INTO BOTTOM PLATE.

NOTE "B"  
 1 1/4" DIAMETER HOLES FOR 1 1/4" DIAMETER X 16" ANCHOR BOLTS. 3/8" X 3" X 3" PLATE WASHERS UNDER NUT.

NOTE:  
 HARDENED WASHERS SHALL BE USED OVER 15/16" DIAMETER HOLES IN BENT PLATES

NOTES ON SETTING OF ANCHOR BOLTS AT EXPANSION BEARINGS

D\* (SIDE OF BEARING AWAY FROM FIXED BEARING)  
 D\* = 1/8" PER EACH 100' OF EXPANSION FOR EVERY 15" FALL BELOW THE NORMAL TEMP. OF 50° F.

D\*\* (SIDE OF BEARING TOWARD FIXED BEARING)  
 D\*\* = 1/8" PER EACH 100' OF EXPANSION FOR EVERY 15" RISE ABOVE THE NORMAL TEMP. OF 50° F.

AFTER BEAMS HAVE BEEN ERECTED AND DIMENSIONS D\* OR D\*\* DETERMINED, HOLES SHALL BE DRILLED AND ANCHOR BOLTS SHALL BE GROUTED IN PLACE. ALL FIXED ANCHOR BOLTS MAY BE BUILT INTO THE MASONRY.

Existing Plans SN 101-0142, 0143 FOR INFORMATION ONLY