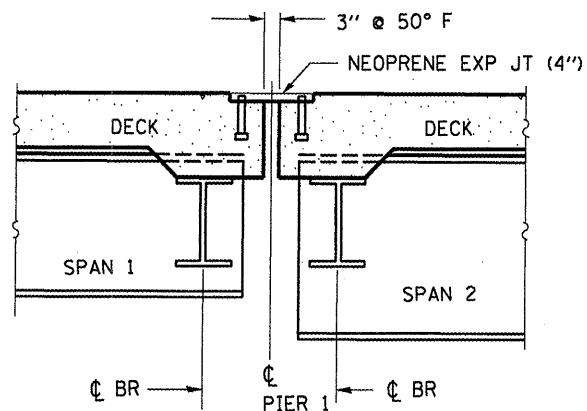
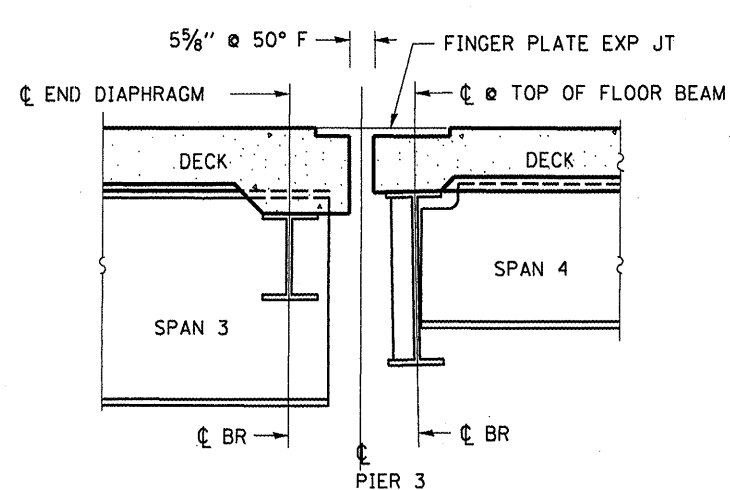


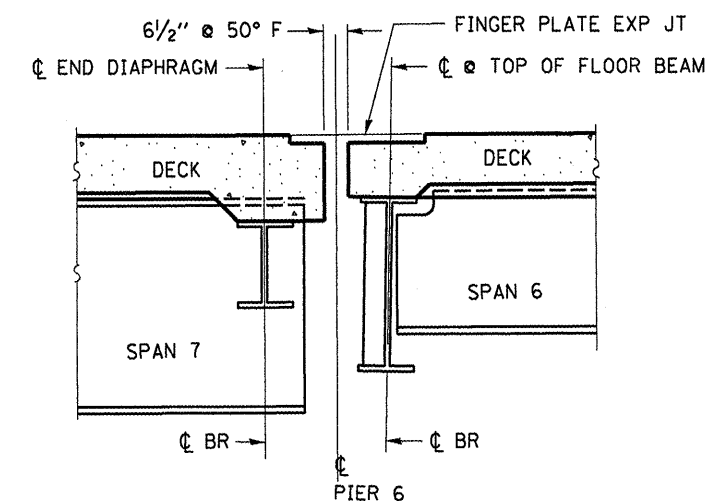
SECTION A-A
(SHOWING N ABUT)



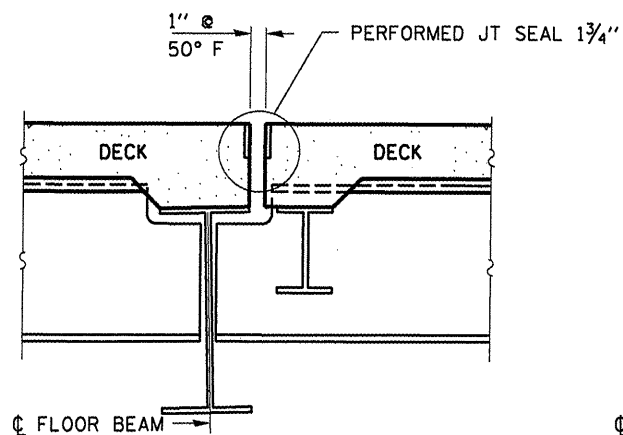
SECTION B-B



SECTION C-C

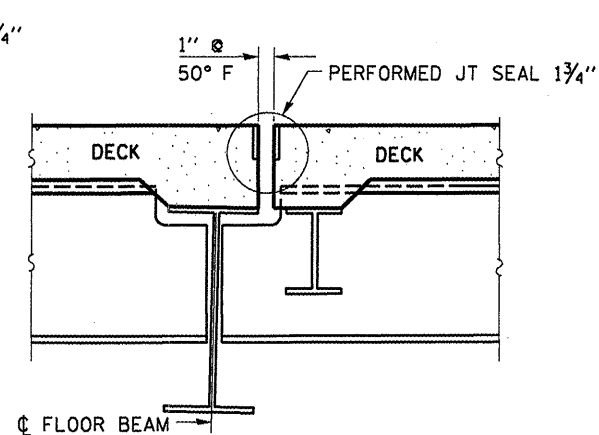


SECTION C'-C'



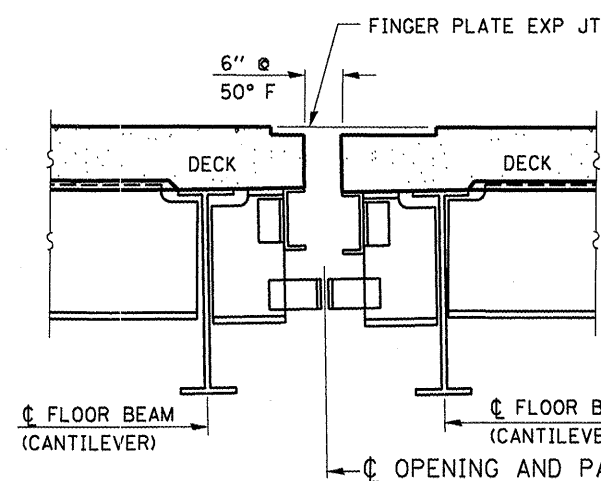
SECTION D-D

(TYP. DETAIL @ RELIEF JOINTS
LOCATION L₃, L₆, L₉, L₁₂, AND L₁₇)

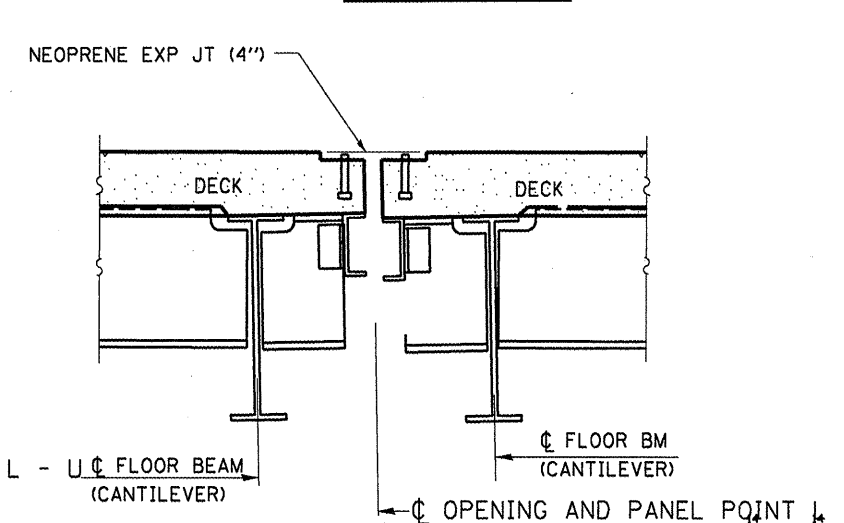


SECTION D'-D'

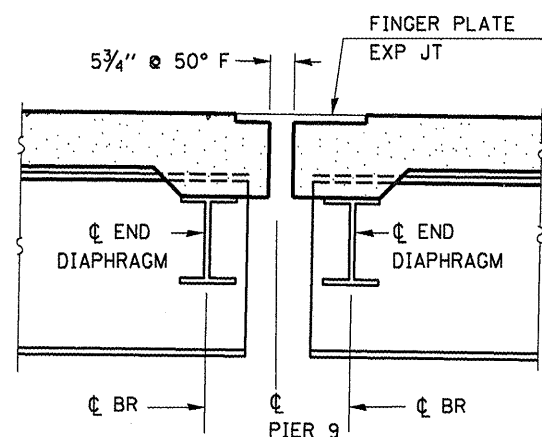
(TYP. DETAIL @ RELIEF JOINTS
LOCATION L₃, L₆, L₉, L₁₂, AND L₁₇)



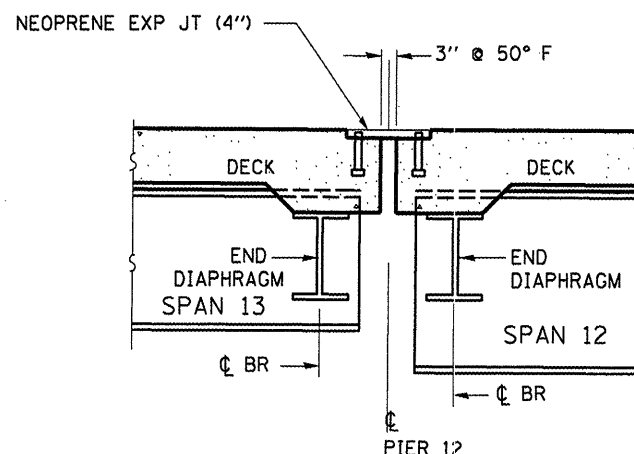
SECTION E-E



SECTION E'-E'



SECTION F-F



SECTION G-G

EXPANSION JOINTS
EAP RTE 46 SEC (1-BD)BP
LASALLE COUNTY
STA 204+67.75
SN 050-0079

FILE NAME =	USER NAME = woodshankr1	DESIGNED = RON WOODSHANK	REVISED =
es:\pw_work\PWIDOT\WOODSHANKRL\dms29370\d366854-sht-details.dgn		DRAWN = RON WOODSHANK	REVISED =
		CHECKED =	REVISED =
		DATE =	REVISED =

STATE OF ILLINOIS
DEPARTMENT OF TRANSPORTATION

FOR INFORMATION ONLY

SCALE: _____ SHEET NO. 4 OF 30 SHEETS STA. 193+08.08 TO STA. 216+13.82

F.A.P. RTE. 46	SECTION (1-BD)BP	COUNTY LASALLE	TOTAL SHEETS 38	SHEET NO. 12
FED. ROAD DIST. NO. - [ILLINOIS] FED. AID PROJECT			CONTRACT NO. 66854	