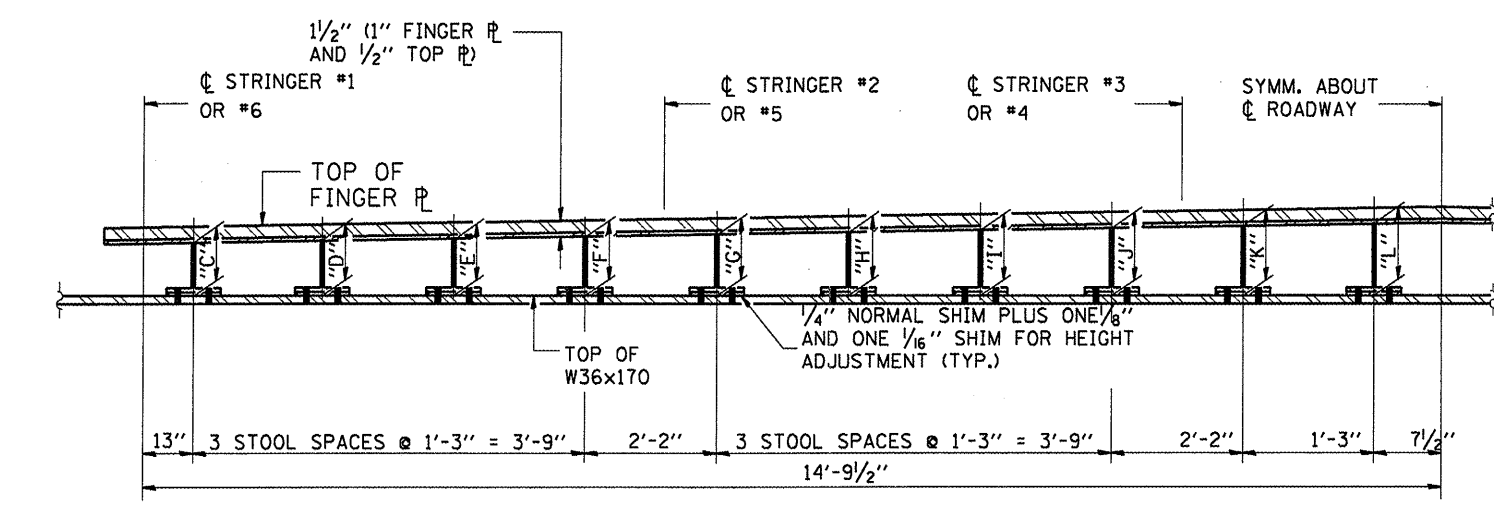


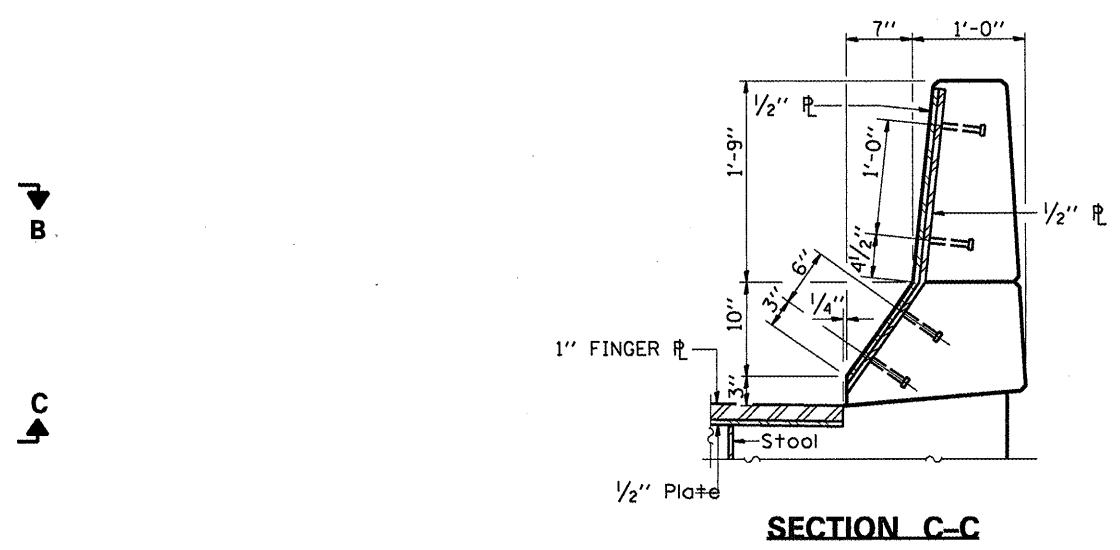
**HALF PLAN  
@ L14 - U14**



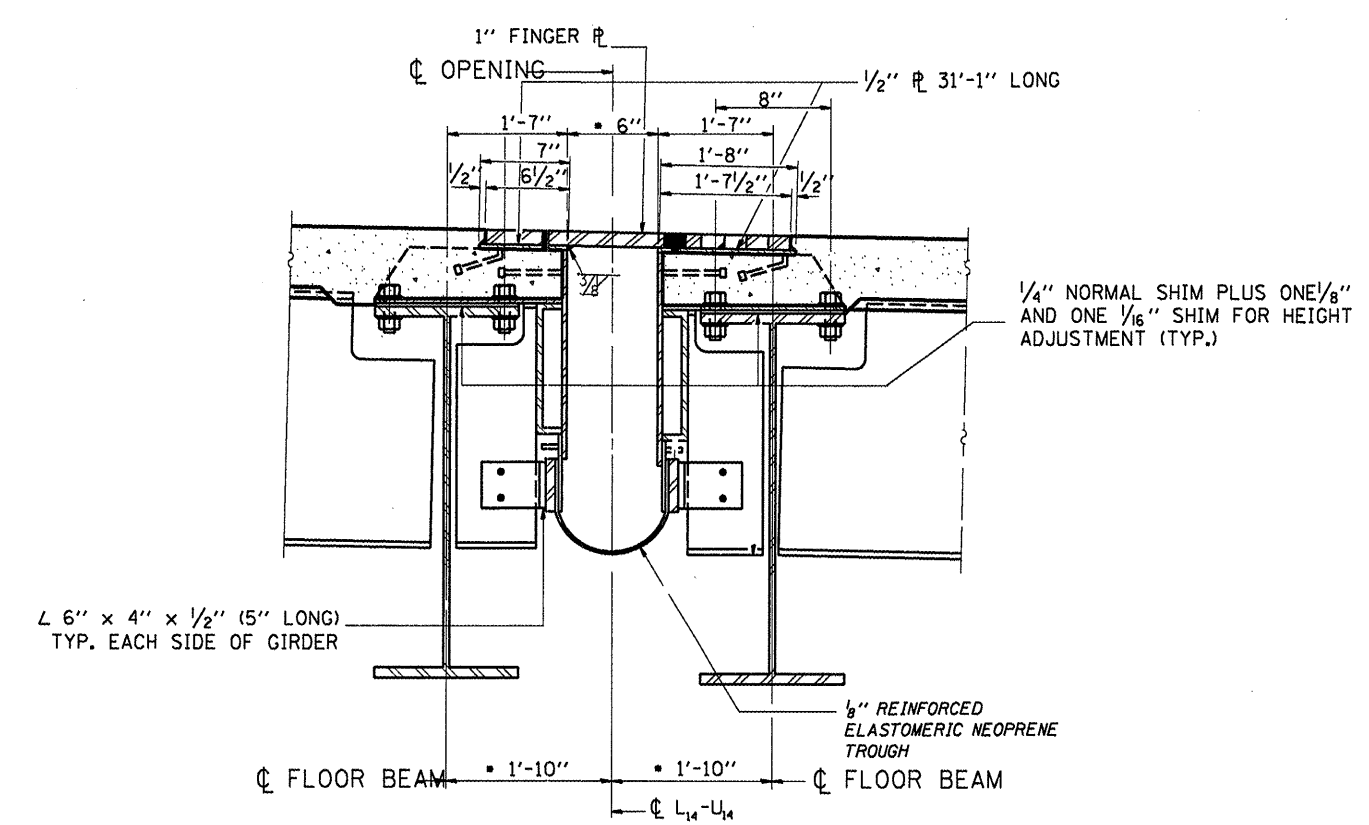
**SECTION B-B**

**STOOL HEIGHTS**

	"C"	"D"	"E"	"F"	"G"	"H"	"I"	"J"	"K"	"L"
L14 (Suspended)	6 <sup>3</sup> / <sub>8</sub> "	6 <sup>1</sup> / <sub>8</sub> "	7"	7 <sup>3</sup> / <sub>8</sub> "	7 <sup>5</sup> / <sub>8</sub> "	7 <sup>7</sup> / <sub>8</sub> "	8 <sup>1</sup> / <sub>8</sub> "	8 <sup>3</sup> / <sub>8</sub> "	8 <sup>5</sup> / <sub>8</sub> "	8 <sup>7</sup> / <sub>8</sub> "
L14 (Cantilevered)	6 <sup>3</sup> / <sub>8</sub> "	6 <sup>1</sup> / <sub>8</sub> "	7 <sup>1</sup> / <sub>8</sub> "	7 <sup>3</sup> / <sub>8</sub> "	7 <sup>5</sup> / <sub>8</sub> "	8"	8 <sup>1</sup> / <sub>8</sub> "	8 <sup>3</sup> / <sub>8</sub> "	8 <sup>5</sup> / <sub>8</sub> "	8 <sup>7</sup> / <sub>8</sub> "



**SECTION C-C**



**SECTION A-A**

**EXPANSION JOINT  
AT L14 - U14  
FAP RTE 46 SEC (1-BD)BP  
LASALLE COUNTY  
STA 204+67.75  
SN 050-0079**