

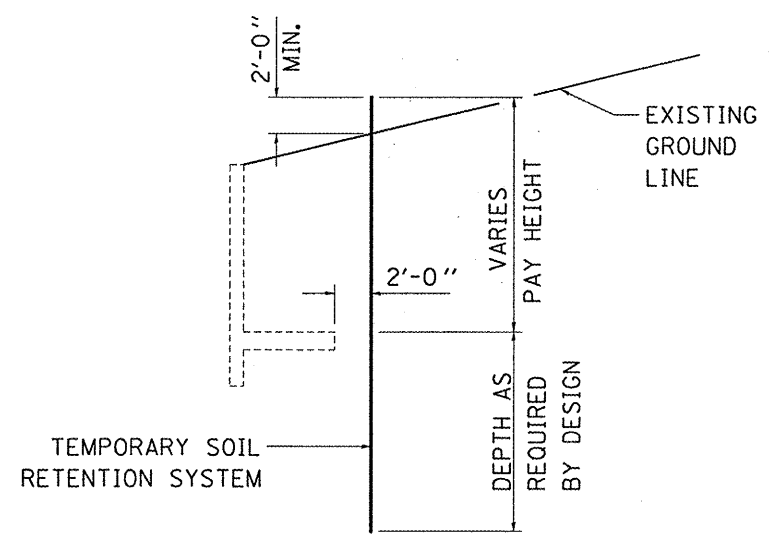
LEGEND

TEMPORARY SOIL RETENTION SYSTEM

☉ ROADWAY &
☉ CULVERT
STA. 275+00

☉ ROADWAY

PLAN



TYPICAL SECTION



EXPIRES 11-30-2010

BILL OF MATERIALS

LOCATION	TEMPORARY SOIL RETENTION SYSTEM SQ FT
NW WINGWALL	206
SW WINGWALL	476
NE WINGWALL	506
NW WINGWALL	219
TOTAL	1407

FILE NAME =	USER NAME = #USER#	DESIGNED - RON WOODSHANK	REVISED -	STATE OF ILLINOIS DEPARTMENT OF TRANSPORTATION	TEMPORARY SOIL RETENTION SYSTEM S.N. 050-2019	F.A.P. RTE. 311	SECTION (58-1)	COUNTY LASALLE	TOTAL SHEETS 13	SHEET NO. 6		
#FILE#	PLOT SCALE = #SCALE#	DRAWN - RON WOODSHANK	REVISED -			SCALE:	SHEET NO. 2 OF 9 SHEETS	STA. TO STA.	CONTRACT NO. 66867			
	PLOT DATE = #DATE#	CHECKED -	REVISED -									
		DATE - 08/21/2008	REVISED -									