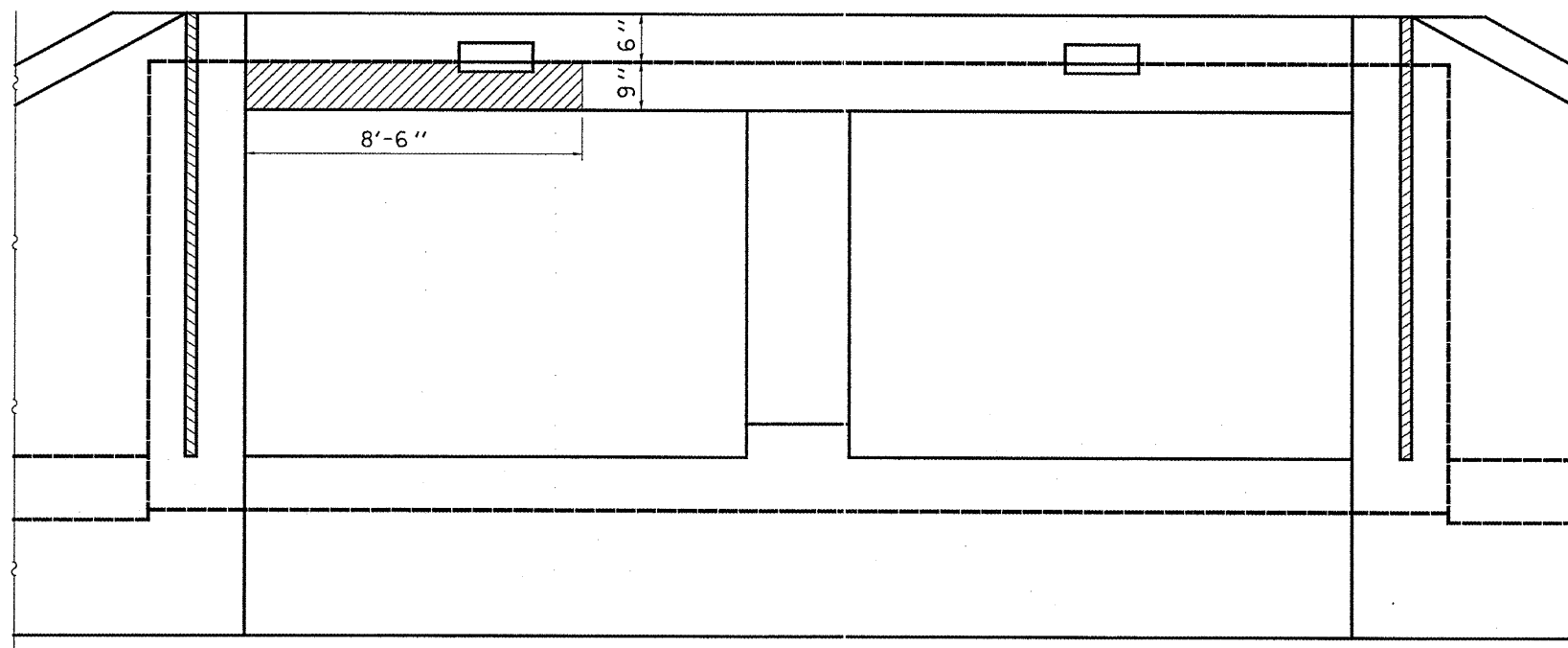


WEST FACE



EAST FACE

**GENERAL NOTES**

LOCATIONS AND DIMENSIONS SHOWN ARE APPROXIMATE. THE CONTRACTOR SHALL SOUND THE EXISTING CONCRETE FOR EXACT DIMENSIONS BEFORE BEGINNING REPAIR OPERATIONS.

SEE THE SPECIAL PROVISION FOR "STRUCTURAL REPAIR OF CONCRETE" FOR REPAIR METHODS AND PROCEDURES.

MISCELLANEOUS QUANTITY FOR STRUCTURAL REPAIR OF CONCRETE HAS BEEN INCLUDED TO BE USED AT THE ENGINEER'S DIRECTION.

REINFORCEMENT BARS SHALL CONFORM TO THE REQUIREMENTS OF ASTM A 706 GR 60. SEE SPECIAL PROVISIONS.

REINFORCEMENT BARS DESIGNATED (E) SHALL BE EPOXY COATED.

**BILL OF MATERIALS**

LOCATION	STRUCTURAL REPAIR OF CONCRETE
	SQ FT
WEST FACE	15
EAST FACE	6
MISCELLANEOUS	10
TOTAL	31

FILE NAME =	USER NAME = *USER*	DESIGNED - RON WOODSHANK	REVISED -
*FILEL*		DRAWN - RON WOODSHANK	REVISED -
	PLOT SCALE = *SCALE*	CHECKED -	REVISED -
	PLOT DATE = *DATE*	DATE - 08/21/2008	REVISED -

STATE OF ILLINOIS  
DEPARTMENT OF TRANSPORTATION

STRUCTURAL REPAIR OF CONCRETE  
S.N. 050-2019

F.A.P. RTE.	SECTION	COUNTY	TOTAL SHEETS	SHEET NO.
311	(58-11)	LASALLE	13	12
FED. ROAD DIST. NO. ILLINOIS			CONTRACT NO. 66867	