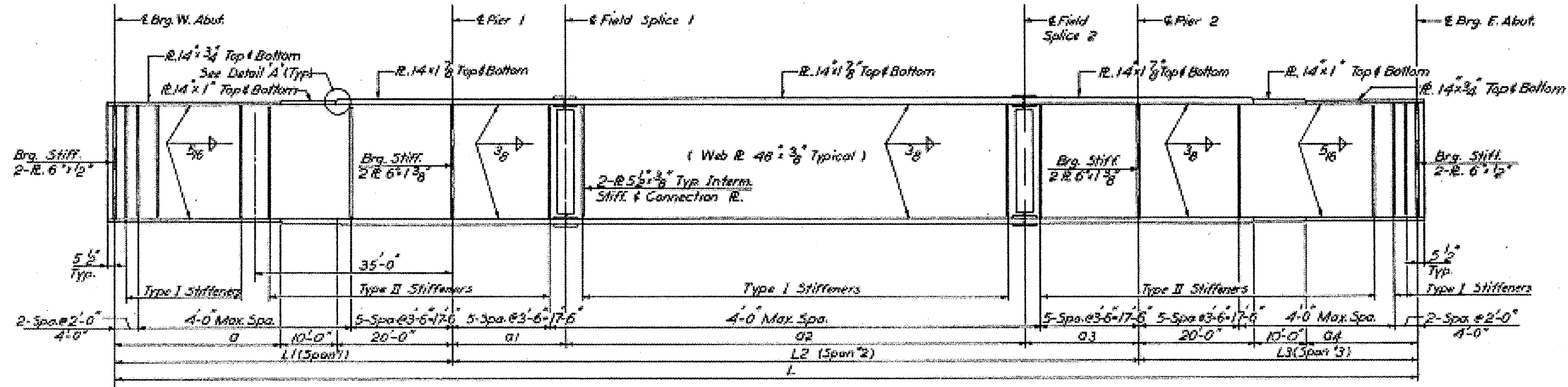


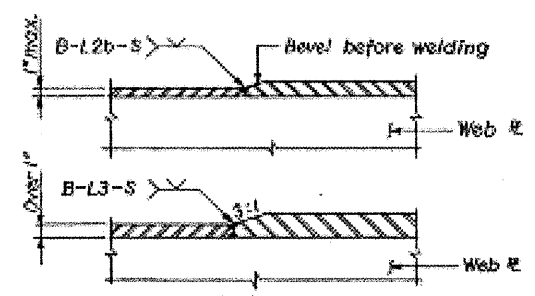
ROUTE NO.	SECTION	COUNTY	TOTAL SHEETS	SHEET NO.
F. A. I. - 180	06-2HB-4	BUREAU	103	15
FED. ROAD DIST. NO. 4		ILLINOIS	PROJECT	



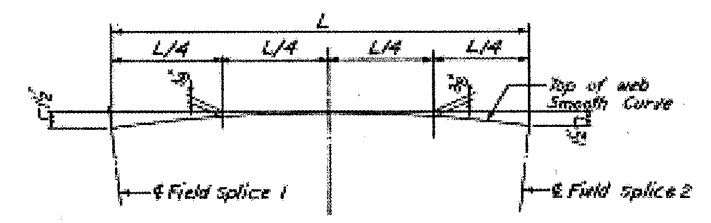
GIRDER SCHEDULE

Girder	L	L1	L2	L3	O	O1	O2	O3	O4
G1	227-8 1/2	59-4 1/2	120-10 1/2	47-6 1/2	29-4 1/2	20-1 1/2	80-7 1/2	20-1 1/2	17-0 1/2
G2	221-0 1/2	59-2 1/2	120-5 1/2	47-4 1/2	29-2 1/2	20-0 1/2	80-4 1/2	20-0 1/2	17-4 1/2
G3	226-5 1/2	59-1 1/2	120-1 1/2	47-2 1/2	29-1 1/2	20-0 1/2	80-1 1/2	20-0 1/2	17-2 1/2
G4	225-9 1/2	58-11 1/2	119-10 1/2	47-0 1/2	28-11 1/2	19-11 1/2	79-11 1/2	19-11 1/2	17-0 1/2
G5	225-2 1/2	58-10 1/2	119-5 1/2	46-10 1/2	28-10 1/2	19-10 1/2	79-8 1/2	19-10 1/2	16-10 1/2
G6	224-7 1/2	58-8 1/2	119-2 1/2	46-8 1/2	28-8 1/2	19-10 1/2	79-5 1/2	19-10 1/2	16-8 1/2

GIRDER ELEVATION

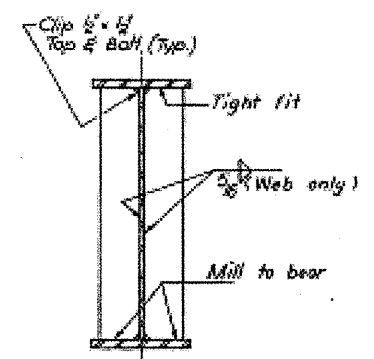


DETAIL 'A'  
(Showing thickness transition)  
Note: All welding shall conform to A.W.S. (D2.0-66)

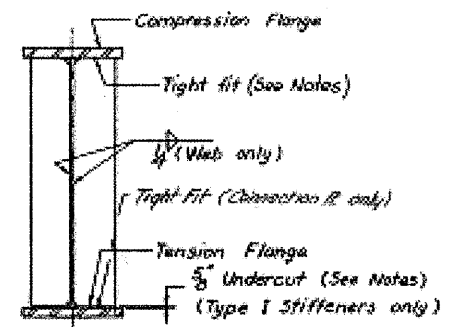


CAMBERING DIAGRAM

For Fabrication of Structural Steel, Includes allowance for Deflection due to weight of concrete.



BEARING STIFFENERS



INTERMEDIATE STIFFENERS & CONNECTION PLATES

Notes:  
Type I Stiffeners shall fit tight at the top flange and be undercut 5/8" at the bottom flange.  
Type II Stiffeners shall fit tight at the bottom flange and be undercut 5/8" at the top flange.  
All bearing Stiffener Plates shall be Vertical

APPROVED  
FOR STRUCTURAL ACCURACY ONLY  
10-2-67  
ENGINEER

BRIDGE NO. 8  
STATE OF ILLINOIS  
DEPARTMENT OF PUBLIC WORKS & BLDGS.  
DIVISION OF HIGHWAYS  
GIRDER DETAILS  
ROADWAY "F" OVER ROADWAY "G"  
STATION 655+47.92  
F. A. I. RT. 180 BUREAU COUNTY SECTION 06-2HB-4  
H. W. LOCKNER, INC.  
ENGINEERS  
CHICAGO, ILLINOIS  
SHEET NO. 12  
7 OF 18

FOR INFORMATION ONLY

DESIGNED BY: R.K.  
DRAWN BY: J.J.  
CHECKED BY: B.B.  
APPROVED BY: K.A.