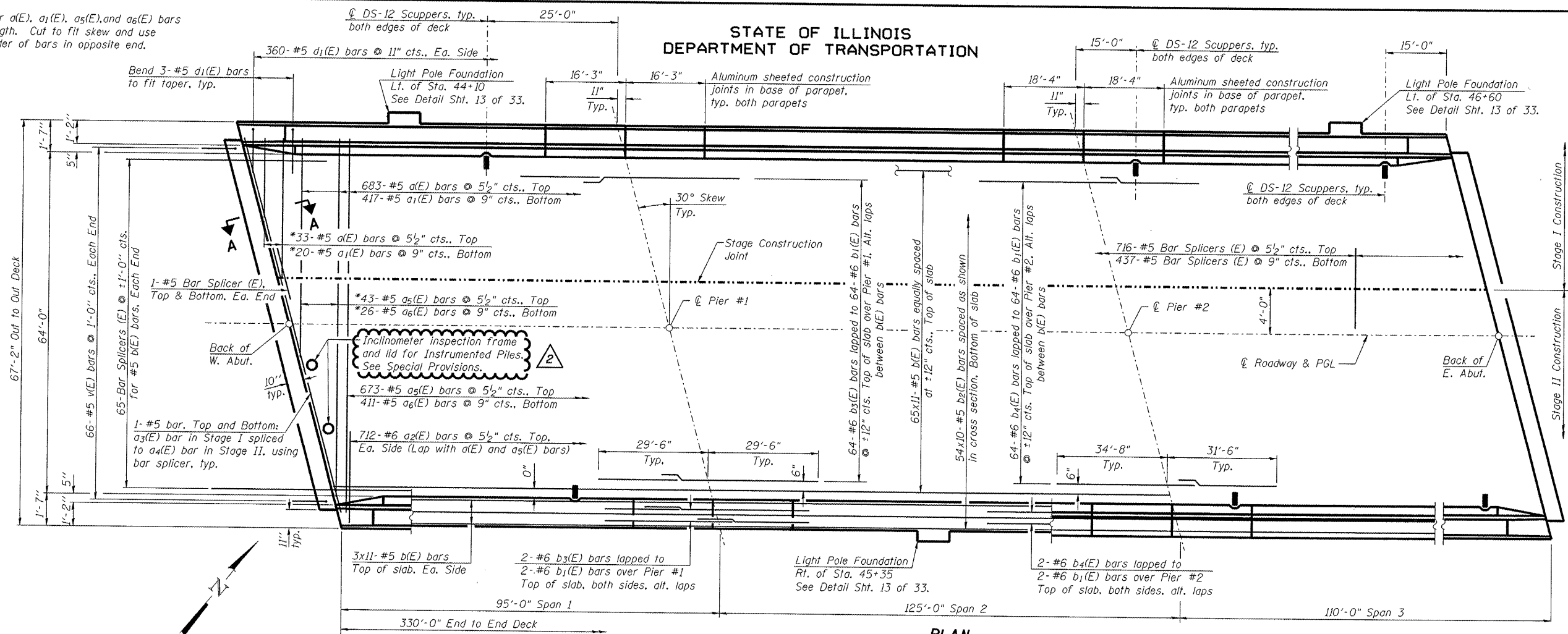
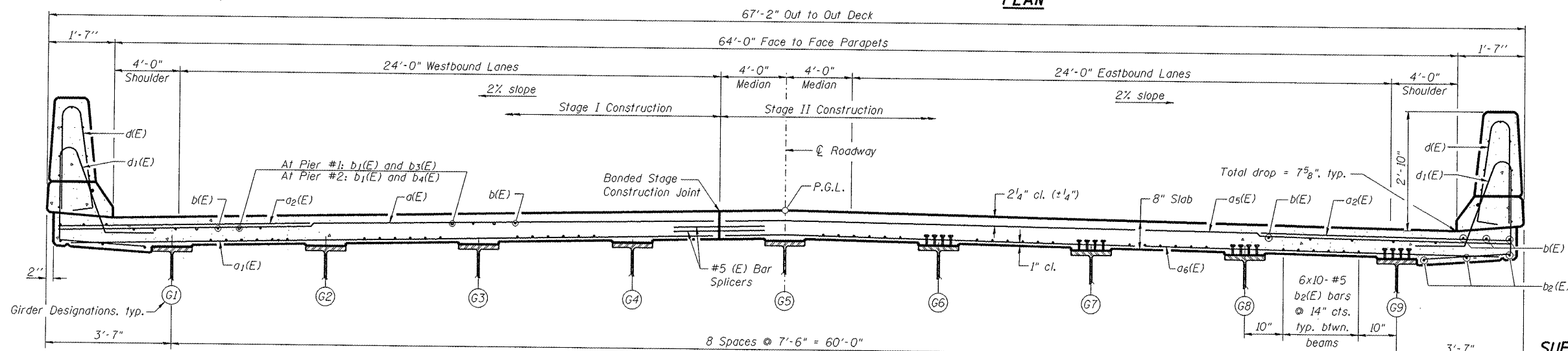


STATE OF ILLINOIS
DEPARTMENT OF TRANSPORTATION

* Order a(E), a₁(E), a₅(E), and a₆(E) bars full length. Cut to fit skew and use remainder of bars in opposite end.



PLAN



CROSS SECTION
(Looking East)

MINIMUM BAR LAPS

(Slab)
#5 bars = 2'-2"
#6 bars = 2'-7"

SUPERSTRUCTURE DETAILS
AIRPORT ROAD OVER U.P.R.R.
AND KICKAPOO CREEK TRIBUTARY
STATION 45+42.00

DESIGNED	PJL
CHECKED	LLV
DRAWN	MGM
CHECKED	PJL

Notes:

- See Sht. 12 of 33 for Superstructure Details and Bill of Material.
- Bars indicated thus 20 x 3-#5 etc. indicates 20 lines of bars with 3 lengths per line.
- See Sht. 12 of 33 for Parapet Reinforcement, and Slab and Parapet Details at Scuppers.
- See Sht. 13 of 33 for Section A-A.

2 Addendum 1/7/2009 PJL

STC AECOM	111 NE Jefferson Avenue Peoria, IL 61602 T 309.676.8464 F 309.676.5445 IL Design Firm Reg. No. 184-001518 www.sticonsultants.com	SHEET NO. 11	F.A.U. RTE.	SECTION	COUNTY	TOTAL SHEETS	SHEET NO.
		OF 33 SHEETS	6578	(1-R)RS(1-VC)BR	PEORIA	142	71
		STRUCTURE NO. 072-0201		CONTRACT NO. 68092			
		FED. ROAD DIST. NO. -		ILLINOIS FED. AID PROJECT			