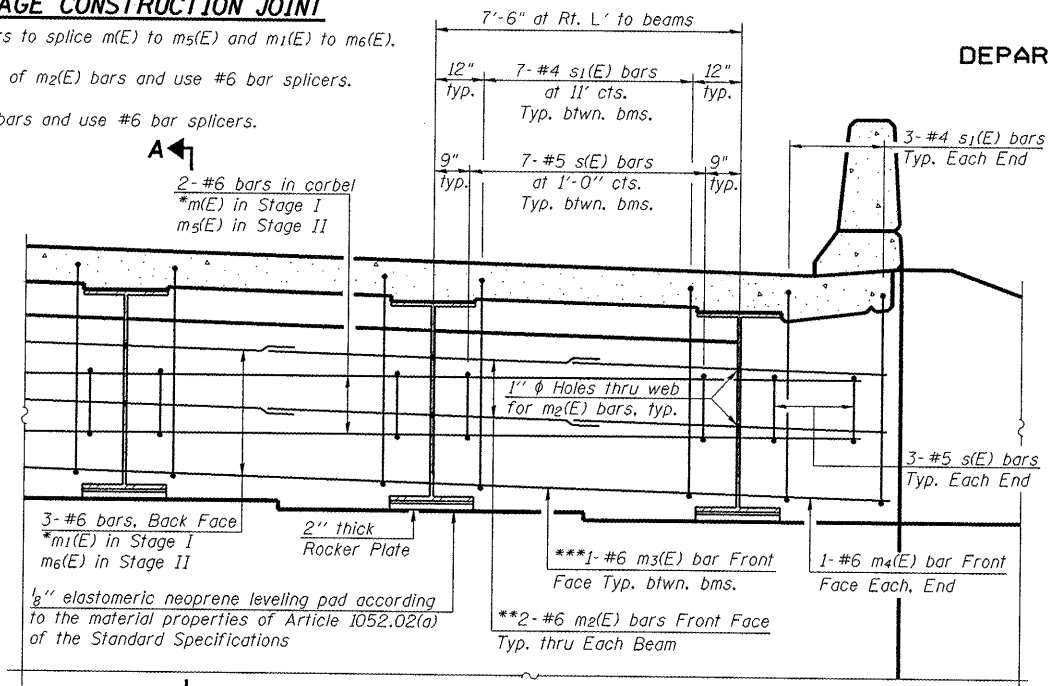


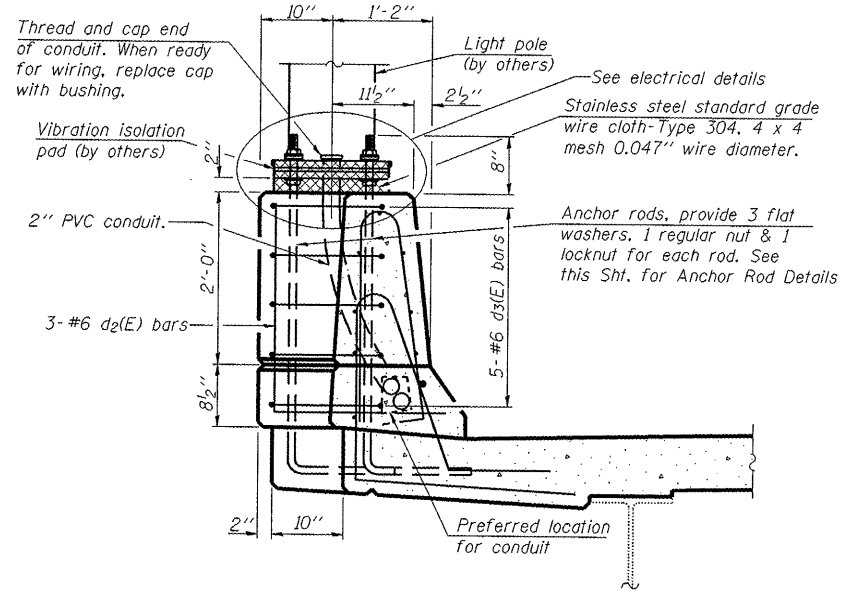
STATE OF ILLINOIS  
DEPARTMENT OF TRANSPORTATION

**NOTE AT STAGE CONSTRUCTION JOINT**

- \* Use #6 bar splicers to splice m(E) to m<sub>5</sub>(E) and m<sub>1</sub>(E) to m<sub>6</sub>(E).
- \*\* Increase bar laps of m<sub>2</sub>(E) bars and use #6 bar splicers.
- \*\*\* Field cut m<sub>3</sub>(E) bars and use #6 bar splicers.

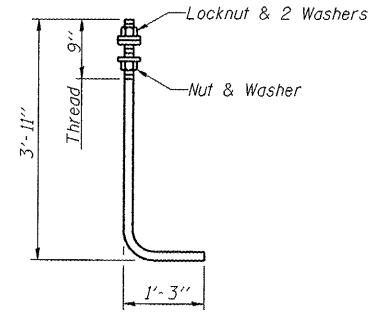


**DIAPHRAGM ELEVATION AT ABUTMENT**



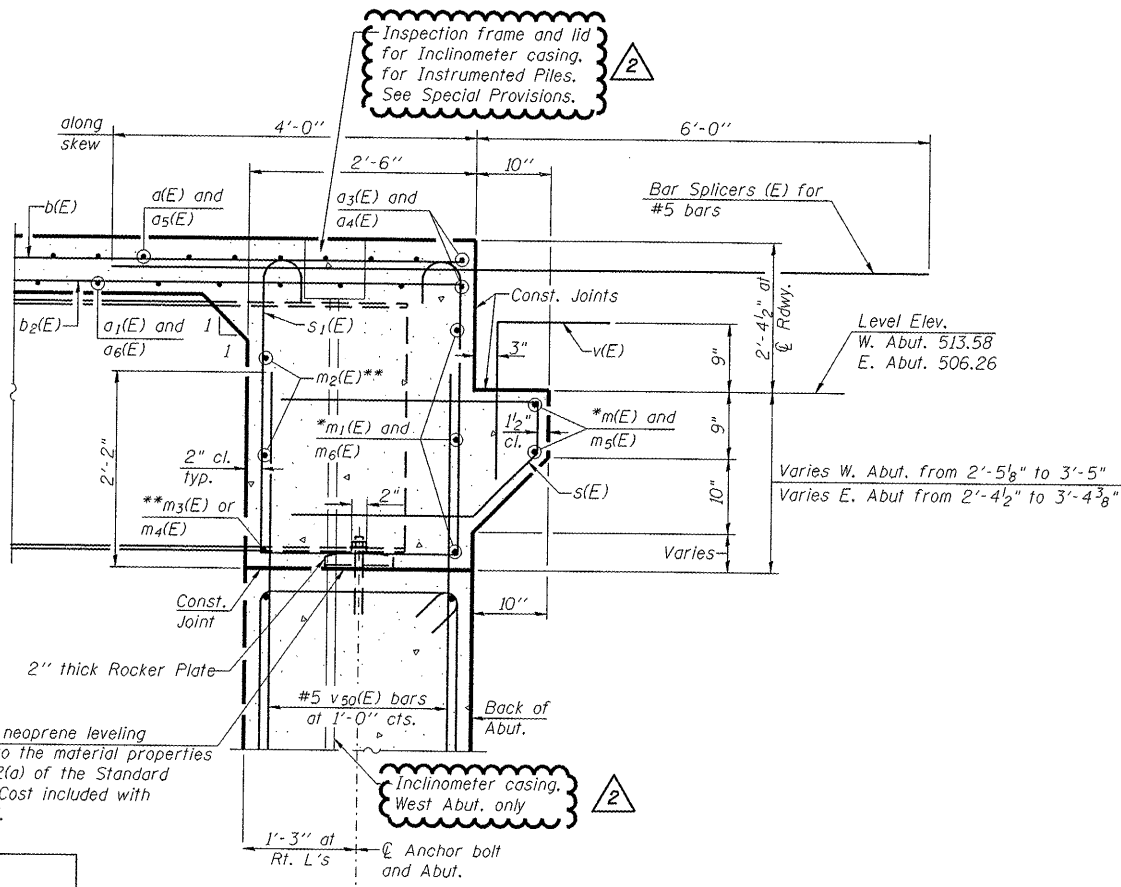
**SECTION C-C**

Note: Cost of Anchor Rods, Leveling Plate, and Conduit is included with Concrete Superstructures.



**ANCHOR ROD**

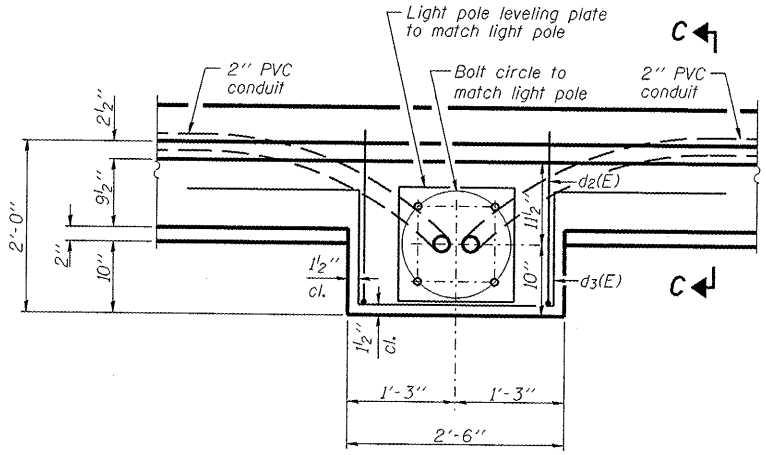
1" Diameter (or as otherwise specified for light poles). Coordinate with Lighting Plans. (ASTM F 1554 Grade 105)



**SECTION A-A**

Dimensions at right angles to abutment, except as shown.

**MINIMUM BAR LAP**  
(Diaphragm)  
#6 bar = 2'-7"



**LIGHT POLE FOUNDATION PLAN**

(3 Required)

**NOTES**

1. Reinforcement bars in diaphragm are billed with superstructure on Sht. 12 of 33.
2. Concrete in diaphragm is included with Concrete Superstructure on Sht. 12 of 33.
3. For details of bars s(E) & s<sub>1</sub>(E) see Sht. 12 of 33.
4. The s(E) and s<sub>1</sub>(E) bars shall be placed parallel to the beams. Spacing for these bars shall be at right angles to the beams.
5. See Abutment Details, Sht. 17 and 18 of 33 for v<sub>50</sub>(E) bars.

DESIGNED	PJL
CHECKED	LLV
DRAWN	MGM
CHECKED	PJL

2 Addendum 1/7/2009 PJL

**DIAPHRAGM AND LIGHT  
POLE FOUNDATION DETAILS  
AIRPORT ROAD OVER U.P.R.R.  
AND KICKAPOO CREEK TRIBUTARY  
STATION 45+42.00**

<b>STS   AECOM</b>	111 NE Jefferson Avenue Peoria, IL 61602 T 309.676.8464 F 309.676.5445 IL Design Firm Reg. No. 184-001518 www.stsconsultants.com	SHEET NO. 13	F.A.U. RTE.	SECTION	COUNTY	TOTAL SHEETS	SHEET NO.
		OF	6578	(1-R)RS(1-VC)BR	PEORIA	142	73
		33 SHEETS	STRUCTURE NO. 072-0201		CONTRACT NO. 68092		FED. ROAD DIST. NO. ILLINOIS FED. AID PROJECT