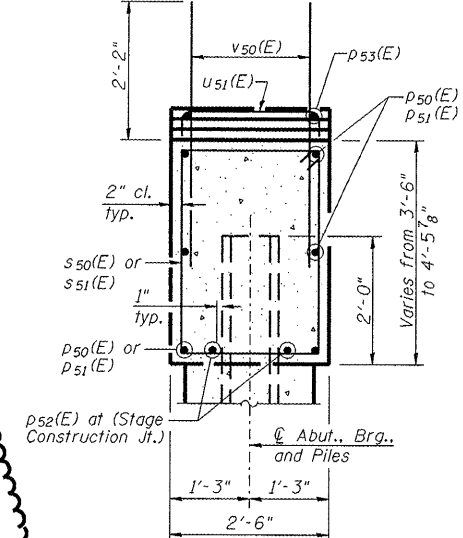
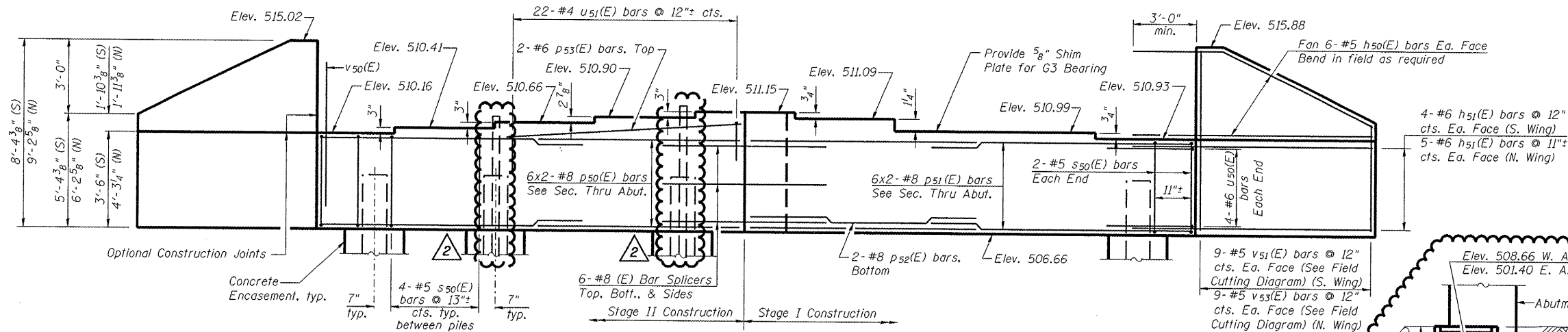


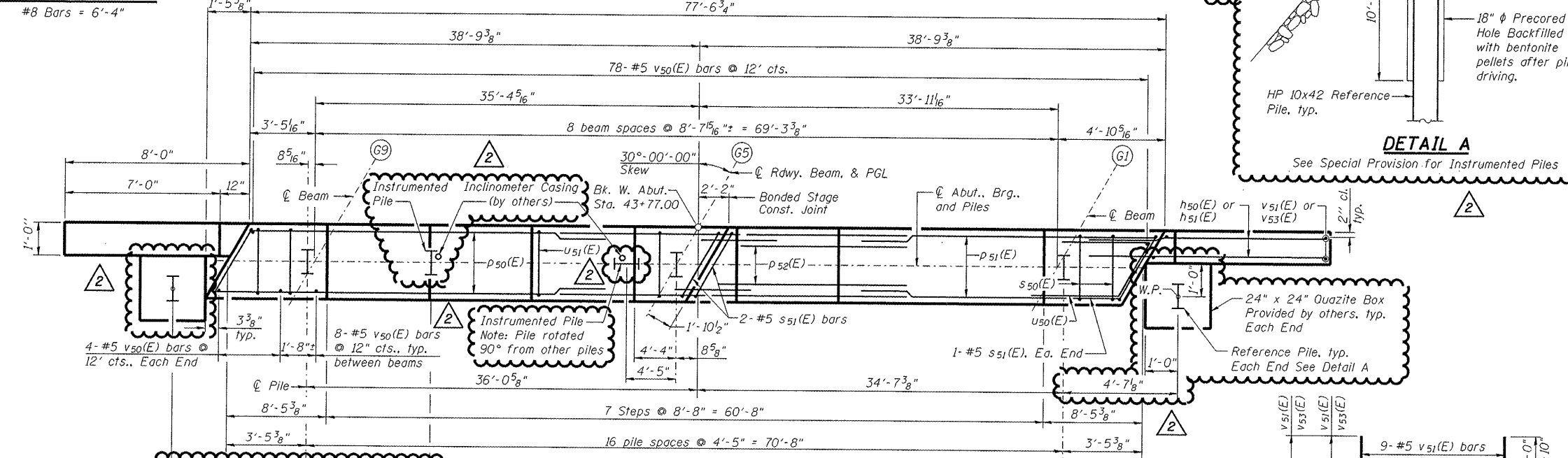
STATE OF ILLINOIS
DEPARTMENT OF TRANSPORTATION

Notes: Four steps monolithically with cap.
See Sht. 16 of 33 for Anchor Bolt Placement.
Space reinforcement to miss anchor bolts.



SECTION THRU ABUTMENT
(At Right Angles)

MINIMUM BAR LAPS
#8 Bars = 6'-4"



DETAIL A
See Special Provision for Instrumented Piles

BILL OF MATERIAL

Bar	No.	Size	Length	Shape
h50(E)	24	#5	11'-6"	—
h51(E)	18	#6	11'-7"	—
p50(E)	12	#8	23'-6"	—
p51(E)	12	#8	21'-4"	—
p52(E)	2	#8	15'-6"	—
p53(E)	2	#6	24'-3"	—
s50(E)	68	#5	11'-7"	□
s51(E)	4	#5	12'-3"	□
u50(E)	8	#6	7'-10"	┘
u51(E)	22	#4	5'-2"	┘
v50(E)	150	#5	4'-4"	—
v51(E)	9	#5	13'-0"	—
v53(E)	9	#5	14'-8"	—
Structure Excavation	Cu. Yd.		265.2	
Concrete Structures	Cu. Yd.		34.1	
Reinforcement Bars, Epoxy Coated	Pound		4,170	
Furnishing Steel Piles, HP10x42	Foot		684	2
Driving Piles	Foot		684	
Test Pile Steel, HP10x42	Each		1	
Concrete Encasement	Cu. Yd.		6.0	
Instrumented Piles	L. Sum		1	

Notes:
1. For Bar Splicer Details, see Sht. 23 of 33.
2. For Pile Details and Concrete Encasement Details, see Sht. 22 of 33.

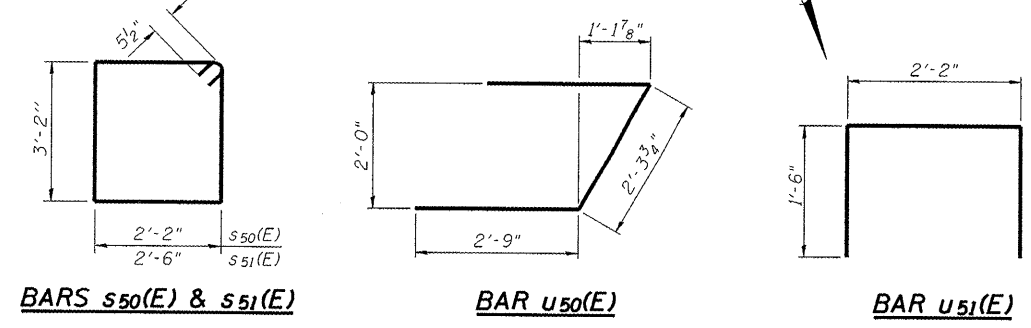
WEST ABUTMENT DETAILS
AIRPORT ROAD OVER U.P.R.R.
AND KICKAPOO CREEK TRIBUTARY
STATION 45+42.00

PILE DATA

Type: Steel HP 10x42
Nominal Required Bearing: 270 K
Factored Resistance Available: 135 K
Est. Length: 38 Feet
No. Production Piles: 16
No. Test Piles: 1

No. Reference Piles: 2

DESIGNED	LLV
CHECKED	PJL
DRAWN	MGM
CHECKED	LLV



Addendum 1/7/2009 PJL

STS | AECOM

111 NE Jefferson Avenue
Peoria, IL 61602
T 309.676.8464
F 309.676.5445
IL Design Firm Reg.
No. 184-001518
www.stsconsultants.com

SHEET NO. 17
OF
33 SHEETS

F.A.U. RTE.	SECTION	COUNTY	TOTAL SHEETS	SHEET NO.
6578	(1-R)RS(1-VC)BR	PEORIA	142	77
STRUCTURE NO. 072-0201		CONTRACT NO. 68092		
FED. ROAD DIST. NO.		ILLINOIS FED. AID PROJECT		

FIELD CUTTING DIAGRAM

Order v51(E) and v53(E) full length. Cut as shown and use remainder of bars in opposite face.

