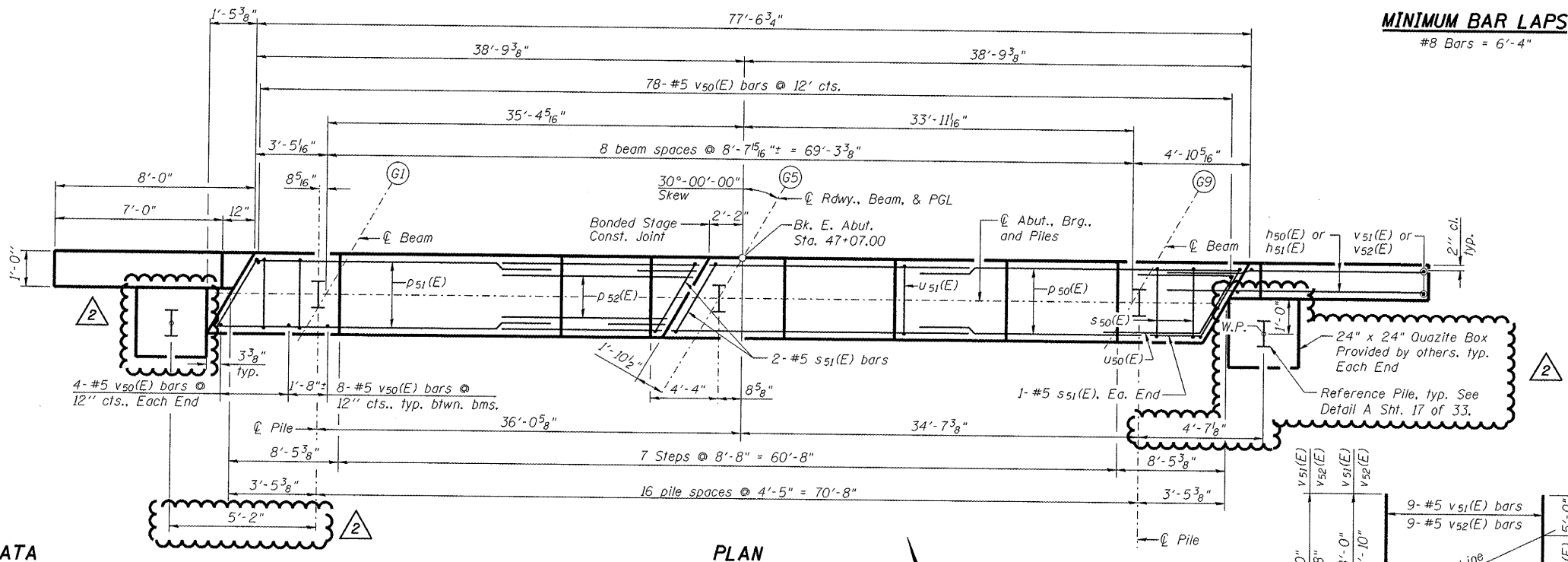
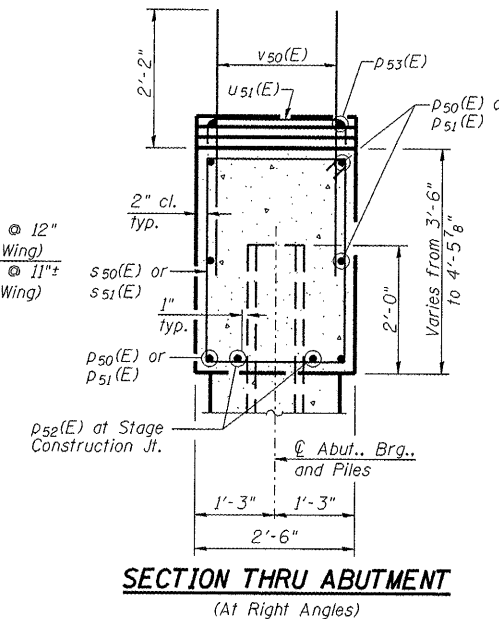
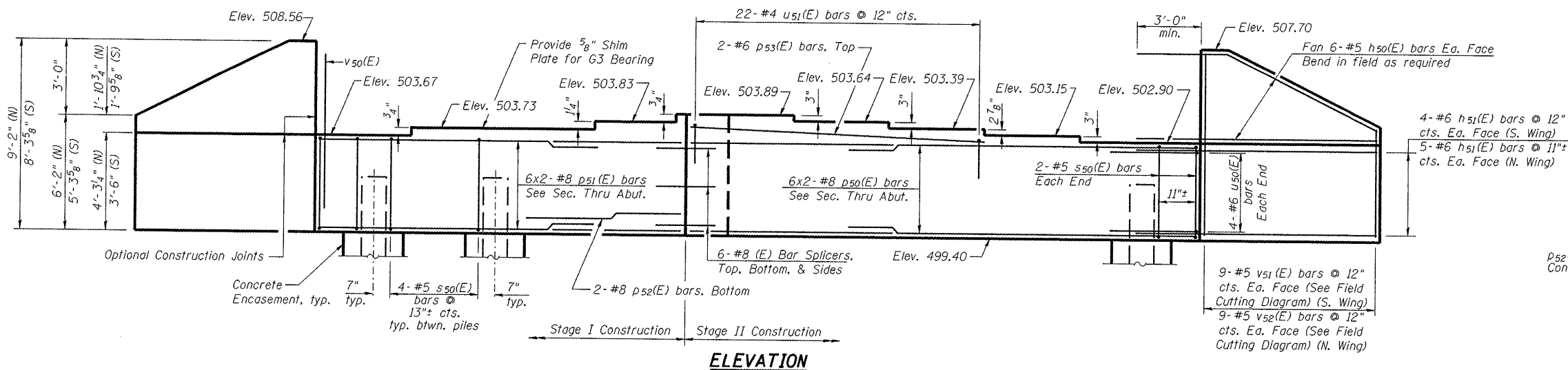


Notes: Pour steps monolithically with cap.
See Sht. 16 of 33 for Anchor Bolt Placement.
Space reinforcement to miss anchor bolts.

STATE OF ILLINOIS
DEPARTMENT OF TRANSPORTATION



MINIMUM BAR LAPS
#8 Bars = 6'-4"

BILL OF MATERIAL

Bar	No.	Size	Length	Shape
h ₅₀ (E)	24	#5	11'-6"	—
h ₅₁ (E)	18	#6	11'-7"	—
p ₅₀ (E)	12	#8	23'-6"	—
p ₅₁ (E)	12	#8	21'-4"	—
p ₅₂ (E)	2	#8	15'-6"	—
p ₅₃ (E)	2	#6	24'-3"	—
s ₅₀ (E)	68	#5	11'-7"	□
s ₅₁ (E)	4	#5	12'-3"	□
u ₅₀ (E)	8	#6	7'-10"	⌋
u ₅₁ (E)	22	#4	5'-2"	⌋
v ₅₀ (E)	150	#5	4'-4"	—
v ₅₁ (E)	9	#5	13'-0"	—
v ₅₂ (E)	9	#5	14'-8"	—
Structure Excavation	Cu. Yd.		172.9	
Concrete Structures	Cu. Yd.		34.1	
Reinforcement Bars, Epoxy Coated	Pound		4,170	
Furnishing Steel HP10x42 Piles,	Foot		836	
Driving Piles	Foot		836	
Concrete Encasement	Cu. Yd.		6.0	

Notes:
1. For Bar Splicer Details, see Sht. 23 of 33.
2. For Pile Details and Concrete Encasement Details, see Sht. 22 of 33.

EAST ABUTMENT DETAILS
AIRPORT ROAD OVER U.P.R.R.
AND KICKAPOO CREEK TRIBUTARY
STATION 45+42.00

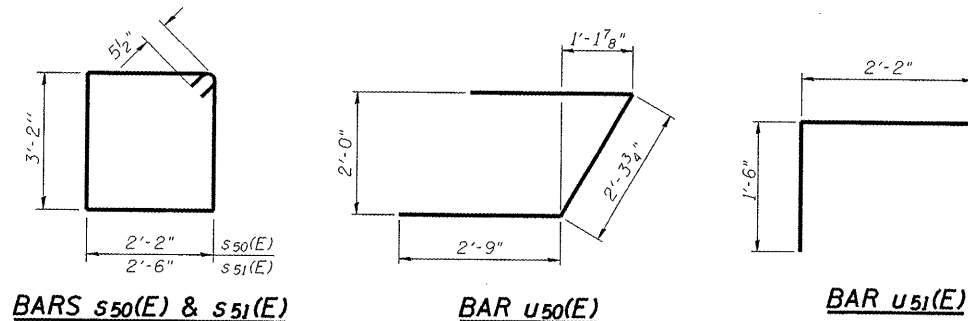
FIELD CUTTING DIAGRAM

Order v₅₁(E) and v₅₂(E) full length. Cut as shown and use remainder of bars in opposite face.

PILE DATA

Type: Steel HP 10x42
Nominal Required Bearing: 244 K
Factored Resistance Available: 122 K
Est. Length: 44 feet
No. Production Piles: 17
No. Test Piles: 0
No. Reference Piles: 2

DESIGNED	LLV
CHECKED	PJL
DRAWN	MGM
CHECKED	LLV



2 Addendum 1/7/2009 PJL

STS | AECOM
111 NE Jefferson Avenue
Peoria, IL 61602
T 309.676.8464
F 309.676.5445
IL Design Firm Reg. No. 184-001516
www.stsconsultants.com

SHEET NO. 18	F.A.U. RTE.	SECTION	COUNTY	TOTAL SHEETS	SHEET NO.
OF	6578	(1-R)RS(1-VC)BR	PEORIA	142	75
33 SHEETS	STRUCTURE NO. 072-0201		CONTRACT NO. 68092		
FED. ROAD DIST. NO. —		ILLINOIS FED. AID PROJECT			