

CONCRETE FOUNDATION DETAIL

CONCRETE FOUNDATION				
LIGHT POLE MOUNTING HEIGHT	BOLT CIRCLE DIAMETER	SHAFT DIAMETER	SHAFT DEPTH	ANCHOR ROD LENGTH ①
< 9.1 m (30')	292 (11.5)	610 (24)	1.52 m (5'-0")	1.45 m (4'-9")
9.4 m - 10.7 m (31'-35')	292 (11.5)	610 (24)	1.67 m (5'-6")	1.60 m (5'-3")
10.9 m - 12.2 m (36'-40')	381 (15) ③	762 (30)	1.83 m (6'-0")	1.75 m (5'-9")
12.5 m - 13.7 m (41'-45')	381 (15) ③	762 (30)	1.98 m (6'-6")	1.90 m (6'-3")
14.0 m - 15.2 m (46'-50')	381 (15) ③	762 (30)	2.13m (7'-0")	2.00 m (6'-9")

- ① Length does not include 100(4)hook
- ② 220 mm x 2.44 m (8 5/8" x 8'-0") for Twin luminaires
- ③ Bolt circle diam. shall be 430 (17) when a TB3-17 transformer base is used

Length above foundation shall be adjusted to accommodate breakaway devices furnished by the contractor for a specific installation.

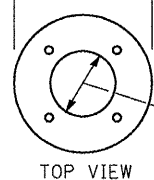
The foundation height shall not exceed four inches in accordance with AASHTO standards.

The foundation conduit shall be filled with pea-gravel to restrict rodent entry.

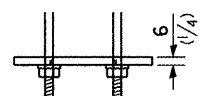
Use dirt removed from foundation to meet 1.52m (5 ft.) chord fill around foundation top. Grade dirt level with bottom of concrete chamfer.

- ④ If the required anchor rod length above top of foundation is less than 75 (3), anchor rods may be lowered below 150 (6).

380 (15) O.D.
450 (18) O.D.
508 (20) O.D.



230 (9) I.D. with 292 (11.5) bolt circle
305 (12) I.D. with 381 (15) bolt circle
356 (14) I.D. with 432 (17) bolt circle

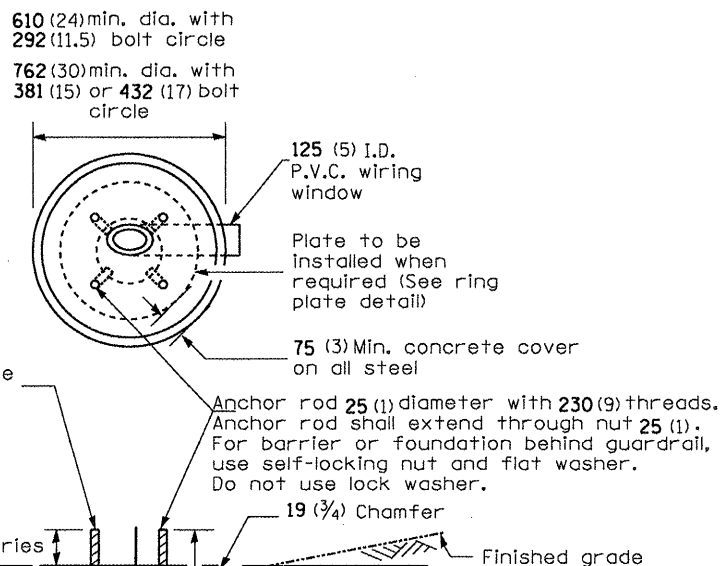


RING PLATE DETAIL

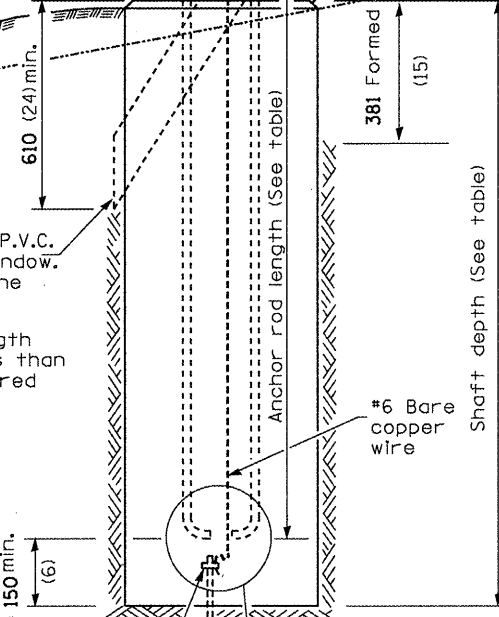
(When rock is encountered and foundation is shallower)

Cast bronze clamp
16 mm x 3 m (5/8" x 10')
Copper clad grounding electrode. When foundation is set in rock, install ground electrode in cable trench.

CONCRETE FOUNDATION



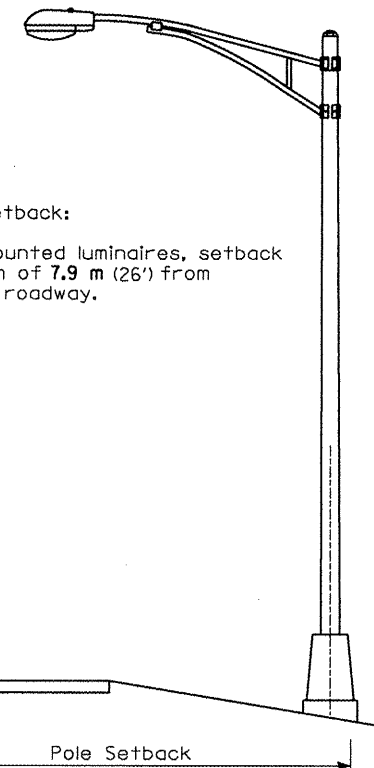
Finished grade



See Ring Plate Detail

ALL DIMENSIONS ARE IN MILLIMETERS (INCHES)
UNLESS OTHERWISE NOTED.

POLE SETBACK DETAIL



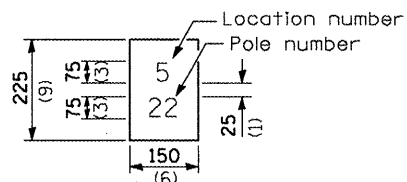
Pole Foundation Setback:

For horizontal mounted luminaires, setback shall be a minimum of 7.9 m (26') from centerline of the roadway.

Notes:

- 1) Wireway may be on front, back or side of foundation as required by the trenching. Place door of transformer base on wireway side to minimize the number of unit duct bends.
- 2) Top of schedule 40 125 (5) I.D. PVC wiring window, shall be flush with the top of foundation for drainage.
- 3) All foundations are designed to be located on slopes not exceeding 2:1 where soils have an unconfined compressive strength of at least 1.0 TSF. The contractor shall verify the soil strength during drilling for concrete foundations or by monitoring installation resistance on steel foundations and notify the engineer if other conditions are encountered.
- 4) Anchor rod shall be increased to 31 (1 1/4) diameter for 15.24 (50') mounting height or above.
- 5) TB3-17 transformer base is not to be used on metal foundation.

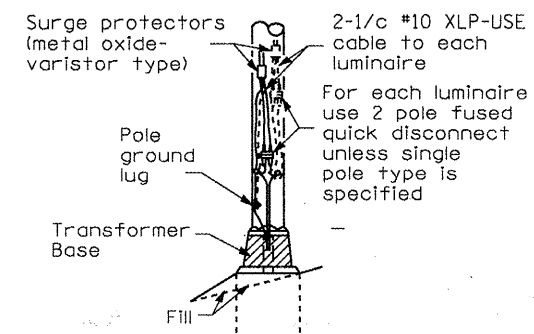
LIGHT POLE IDENTIFICATION DETAIL



The contractor shall furnish and install a light pole identification of each new light pole, as shown above, incidental to the respective light pole pay item. The numerals shall be 100(4) series "D", black, screened on silver-white type A pressure sensitive reflective sheeting conforming to the requirements of section 1091 of the Standard Specifications for Traffic Control Items. The numerals shall conform to the FHWA "Standard Alphabets for Highway Signs".

The light pole identification shall be applied to sign base material as specified in section 1069.06 of the Standard Specifications, approximately 180 (7) above the adjacent pavement grade visible to approaching traffic.

FRANGIBLE BASE MOUNTING DETAIL



EXISTING TRANSFORMER BASE

NOT TO SCALE
OVERHEAD LIGHTING
SHEET 4 OF 4

FILE NAME =	USER NAME = brucebm	DESIGNED -	REVISED -	STATE OF ILLINOIS DEPARTMENT OF TRANSPORTATION	IL 116 & AIRPORT RD. PROPOSED LIGHTING SYSTEM DETAILS	F.A.U. RTE.	SECTION	COUNTY	TOTAL SHEETS	SHEET NO.	
C:\Documents and Settings\laynedm\Local Settings\Temporary Internet Files\OLK85\688	DRAWN16 Airport Rd Signals and Light	REVISED	REVISED			6578	(1-RRS (1-VC)BR	Pearla	142	59	
PLOT SCALE = 56.5714 "/ IN.	CHECKED -	REVISION	REVISION			CONTRACT NO. 68092					
PLOT DATE = 10/17/2009	DATE -	REVISION	REVISION			FED. ROAD DIST. NO. [ILLINOIS] FED. AID PROJECT					