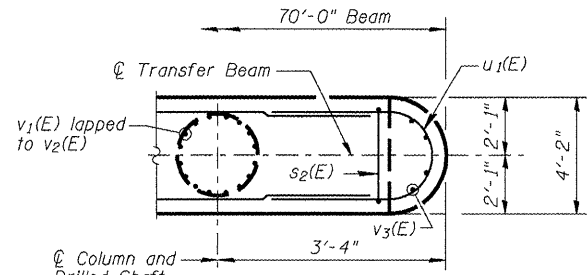
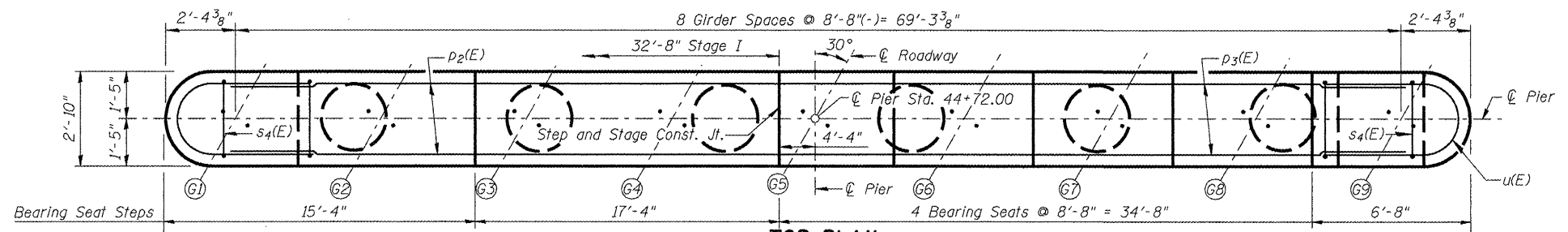


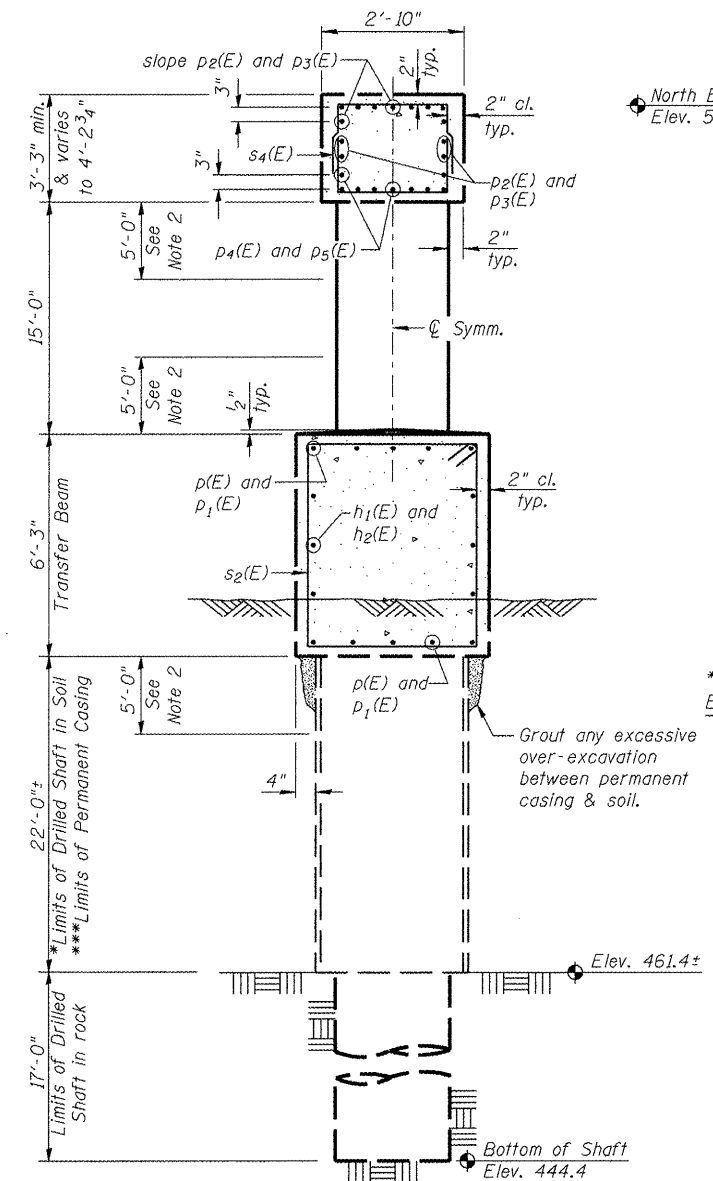
STATE OF ILLINOIS
DEPARTMENT OF TRANSPORTATION



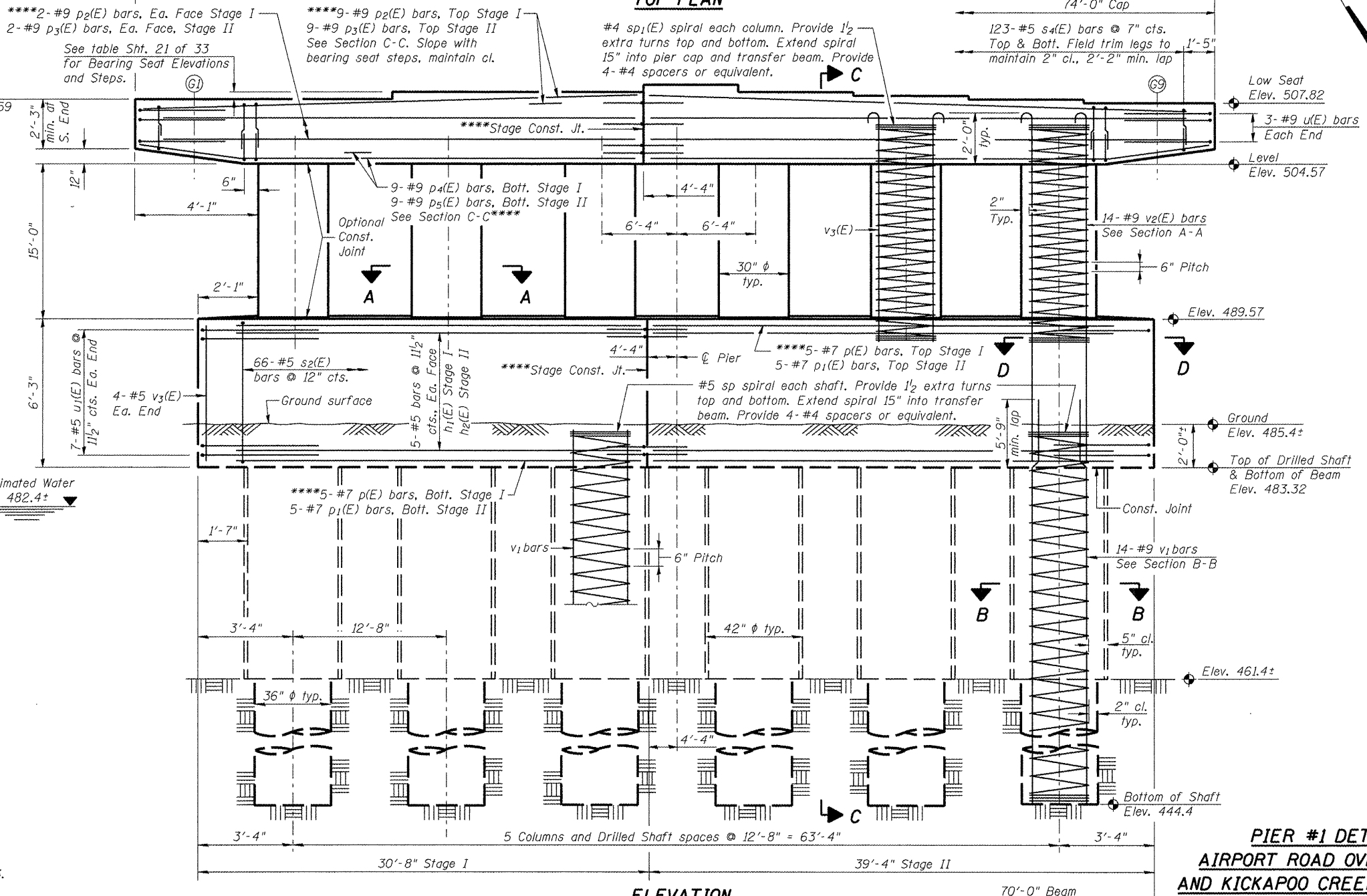
SECTION D-D
Typ. Both Ends



TOP PLAN



SECTION C-C



ELEVATION
(Looking East)

PIER #1 DETAILS
AIRPORT ROAD OVER U.P.R.R.
AND KICKAPOO CREEK TRIBUTARY
STATION 45+42.00

* See note, Sht. 21 of 33.
***Contractor is responsible for determining the casing thickness and the actual tip elevation to be used. See Article 516.06(d) of the Standard Specifications. Pay limits for the Permanent Casing shall be based on the minimum length shown.
**** Use Bar Splicers at Stage Construction Joint.
1. See Sht. 21 of 33 for notes, Section A-A, Section B-B, Bar Bends, and Bill of Material.
2. No spiral or vertical bar splices are permitted in these regions.

DESIGNED	PJL
CHECKED	LLV
DRAWN	MGM
CHECKED	PJL

STS AECOM 111 NE Jefferson Avenue Peoria, IL 61602 T 309.676.8464 F 309.676.5445 IL Design Firm Reg. No. 184-001518 www.stsconsultants.com	SHEET NO. 19	F.A.U. RTE.	SECTION	COUNTY	TOTAL SHEETS	SHEET NO.
	OF	6578	(1-R)RS(1-VC)BR	PEORIA	142	79
	33 SHEETS	STRUCTURE NO. 072-0201		CONTRACT NO. 68092		
		FED. ROAD DIST. NO. ILLINOIS FED. AID PROJECT				