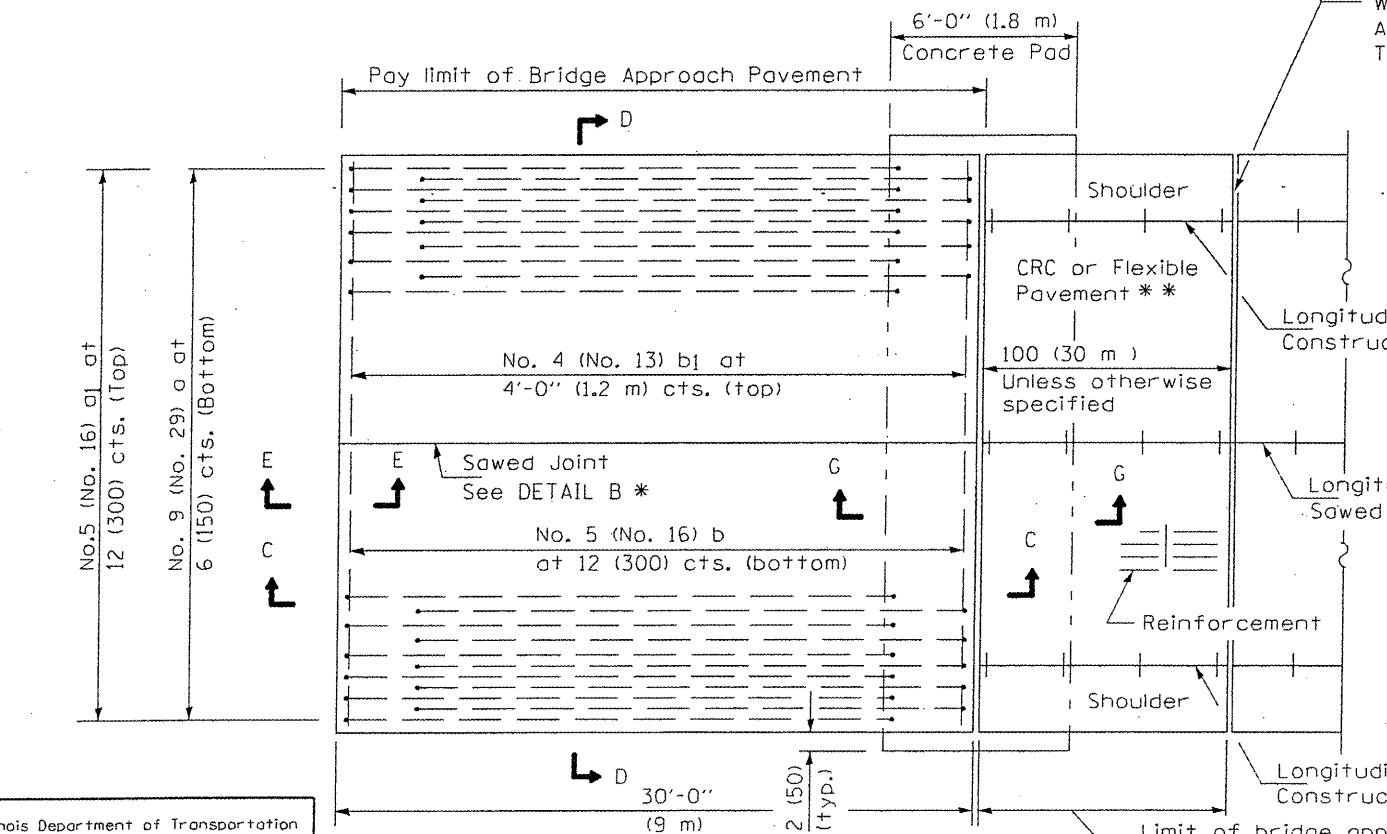
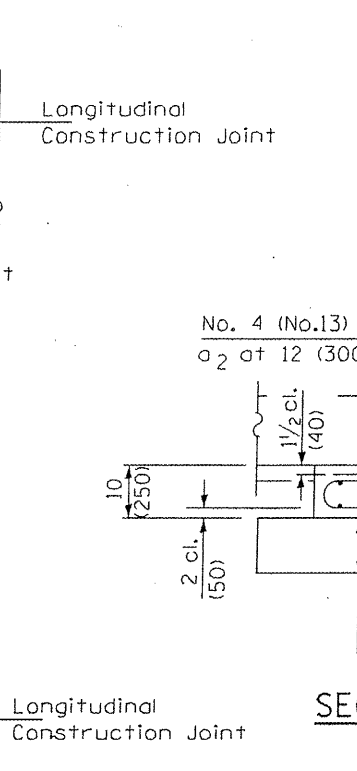


PLAN - WITH SKEW



PLAN - WITHOUT SKEW

NEW CONSTRUCTION

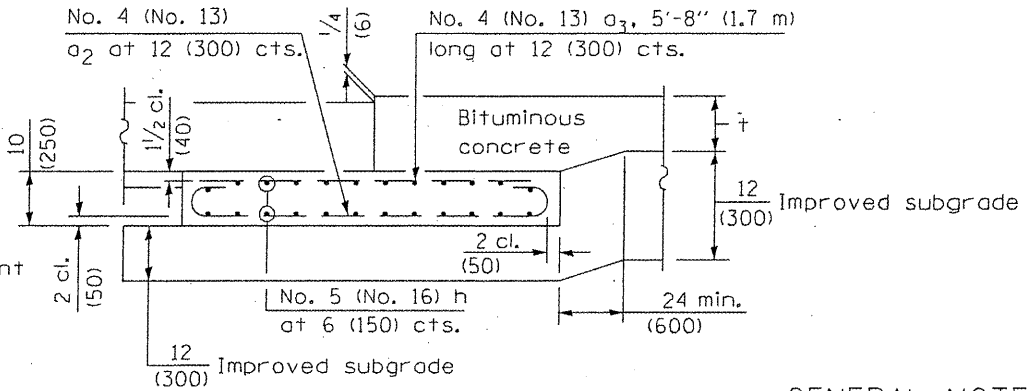


SECTION G-G - RIGID PAVEMENT

(Showing reinforcement)

Rigid Pavement only:

Wide Flange Beam Terminal Joint (See DETAIL AT BEAM - Standard 421101 or 421106) or 2 (50) Trans. Exp. Joint as detailed on Standard 420001.



SECTION G-G - FLEXIBLE PAVEMENT

(Showing reinforcement)

GENERAL NOTES

- THICKNESS--"t"=Thickness of Pavement.
- See Standard 421001 for reinforcement details not shown.
- See Standard 420001 for joint details not shown.
- All dimensions are in inches (millimeters) unless otherwise shown.

Illinois Department of Transportation

APPROVED January 1, 2008  
*Walsh E. Anderson*  
 ENGINEER OF BRIDGES AND STRUCTURES

ISSUED 1-1-07  
 16-1-07

APPROVED January 1, 2008  
*Ken E. Ka*  
 ENGINEER OF DESIGN AND ENVIRONMENT

\* Saw @ or lane edge if poured two or more lane widths at a time.  
 \*\* Omit Reinforcement, tie bars and Long. sawed Jt. for Flexible Pavement.

DATE	REVISIONS
1-1-08	Switched units to English (metric). Moved rebar epoxy coat note to Standard Spec.
1-1-04	Rev. size of Trans. Exp. Jt. and soft converted metric reinf.

BRIDGE APPROACH PAVEMENT

(Sheet 1 of 4)

SHEET 142A

CONTRACT # 68092

