

FAS RTE	SECTION	COUNTY	TOTAL SHEETS	SHEET NO.
253	68(BR, BR-1)	MARSHALL	77	33

**STATE OF ILLINOIS  
DEPARTMENT OF TRANSPORTATION**

**DIVISION OF HIGHWAYS  
PROPOSED  
HIGHWAY PLANS**

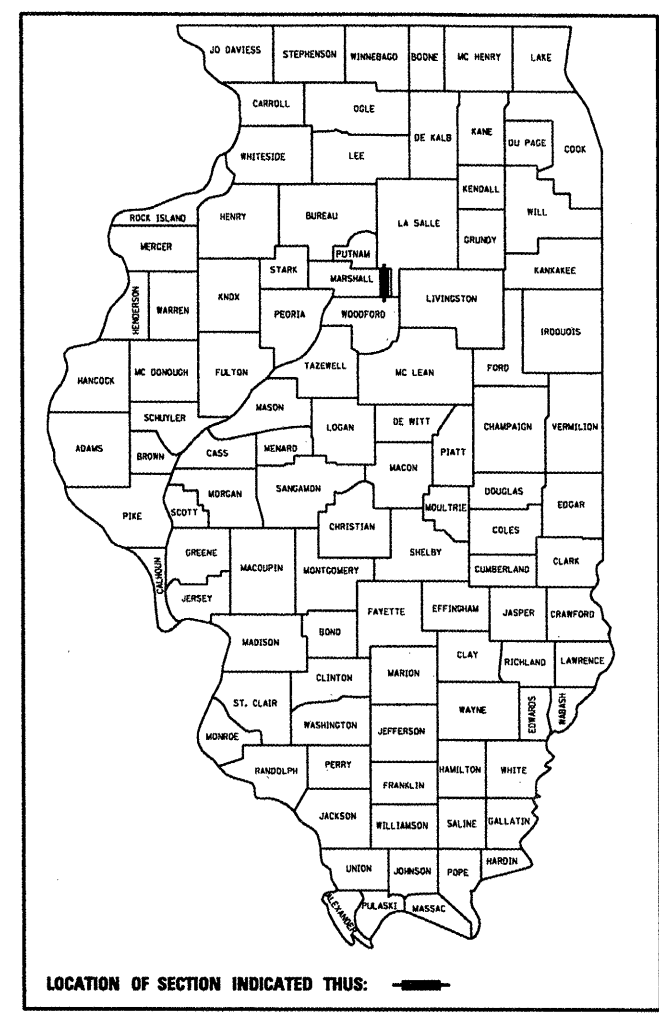
**FAS ROUTE 253 (IL 251)  
SECTION 68(BR, BR-1)**

**MARSHALL COUNTY  
C-94-047-06  
ILLINOIS ROUTE 251 OVER SANDY CREEK  
STRUCTURE REPLACEMENT**

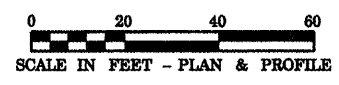
D-94-040-06

**INDEX OF SHEETS**

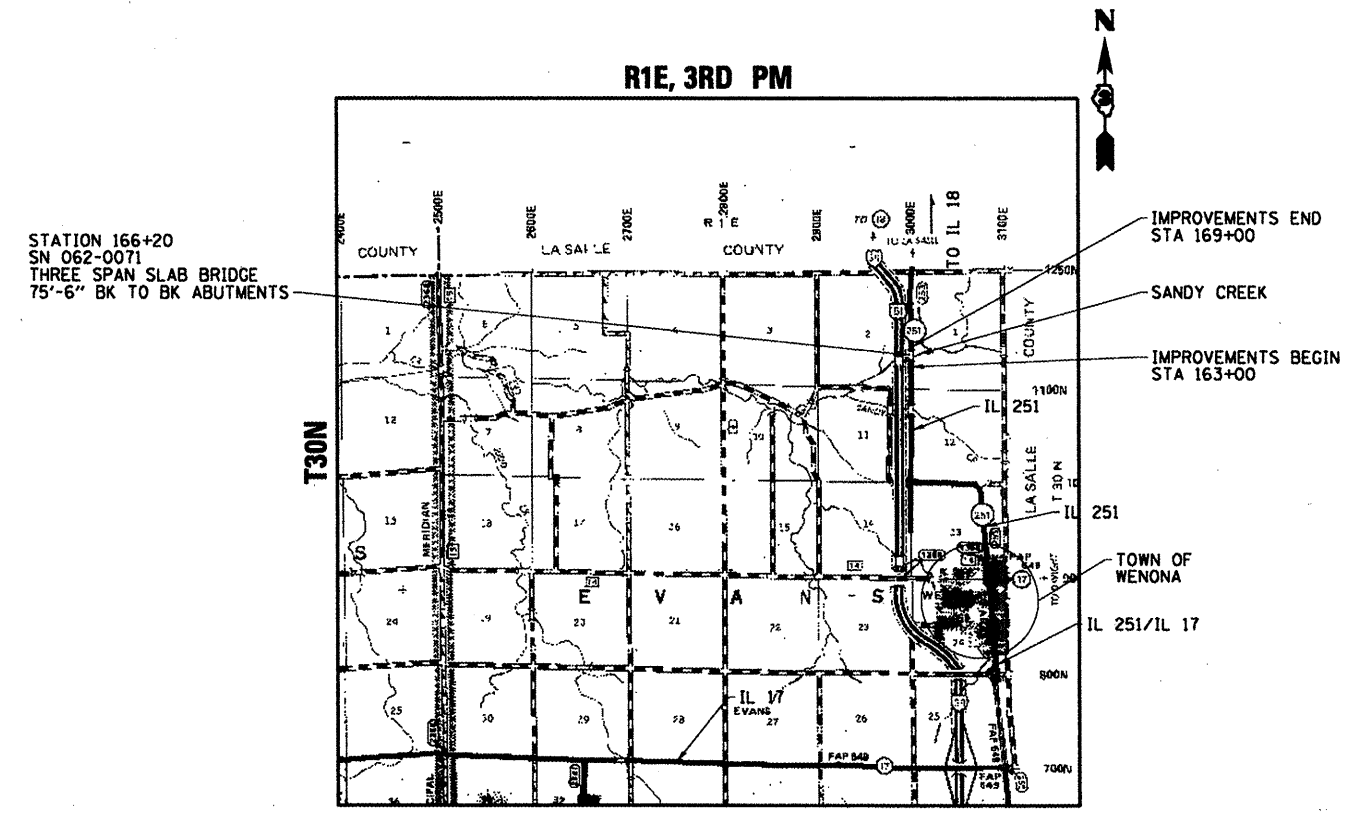
SHEET NO.	DESCRIPTION
<b>ROADWAY PLANS</b>	
33.	COVER SHEET
34.	SUMMARY OF QUANTITIES
35.	TYPICAL SECTIONS
36.-37.	SCHEDULES OF QUANTITIES
38.-40.	FAS RTE 253 (IL 251) PLAN AND PROFILE
41.	EROSION CONTROL AND DRAINAGE PLAN
42.-44.	MISCELLANEOUS DETAILS
<b>STRUCTURE PLANS</b>	
45.	GENERAL PLAN
46.	GENERAL DATA
47.	TOP OF SLAB ELEVATIONS
48.	SUPERSTRUCTURE
49.-50.	SUPERSTRUCTURE DETAILS
51.	ABUTMENTS
52.	PIERS
53.	SOIL BORINGS
<b>EXISTING STRUCTURE PLANS</b>	
54.-57.	EXISTING STRUCTURE PLANS
<b>CROSS SECTIONS</b>	
58.-61.	FAS RTE 253 (IL 251) CROSS SECTIONS



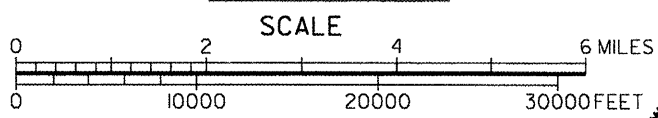
<b>FUNCTIONAL CLASSIFICATION:</b>	<b>MAJOR COLLECTOR (RURAL)</b>
DESIGN SPEED:	55 mph
POSTED SPEED:	55 mph
ADT:	800 (2003)
PV:	91.9%
SU:	2.7%
MU:	5.4%



FULL SIZE PLANS HAVE BEEN PREPARED USING STANDARD ENGINEERING SCALES. REDUCED SIZED PLANS WILL NOT CONFORM TO STANDARD SCALES. IN MAKING MEASUREMENTS ON REDUCED PLANS, THE ABOVE SCALES MAY BE USED.



**LOCATION MAP**



GROSS LENGTH = 600 FT. = 0.114 MI.  
NET LENGTH = 600 FT. = 0.114 MI.



J.U.L.I.E.  
JOINT UTILITY LOCATION INFORMATION FOR EXCAVATION  
1-800-892-0123

DESIGN ENGINEER: MR. CHRIS MAUSHARD 309-671-3464  
PROJECT ENGINEER: RICH DOTSON 309-671-3455  
TOWNSHIP: EVANS  
CONTRACT NO.: 68573

RICHARD D. PAYNE  
 LICENSED PROFESSIONAL ENGINEER  
 STATE OF ILLINOIS  
 DATE: 05/19/2006  
 ILLINOIS PROFESSIONAL LICENSE NO. 37421  
 (EXPIRATION DATE: 11-30-06)

**PRINTED BY THE AUTHORITY  
OF THE STATE OF ILLINOIS**