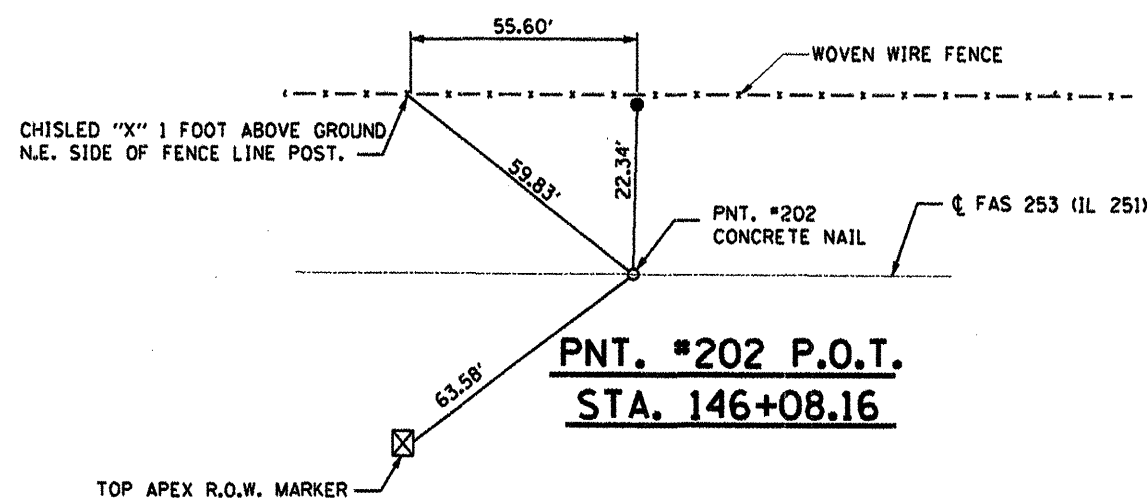
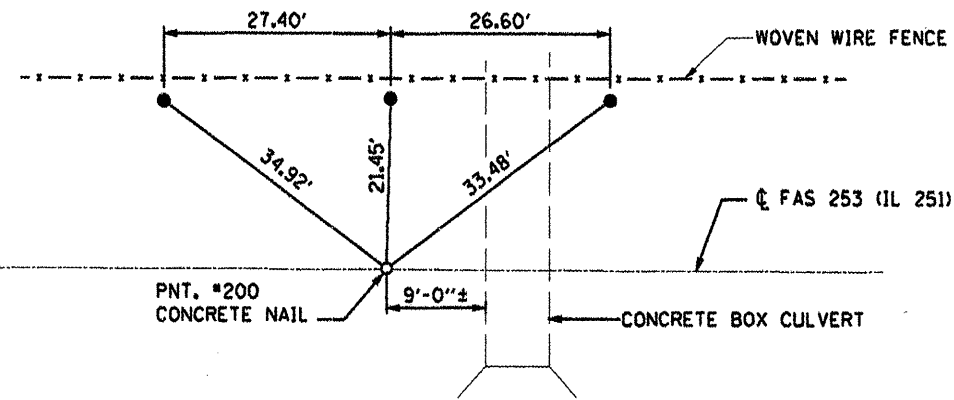
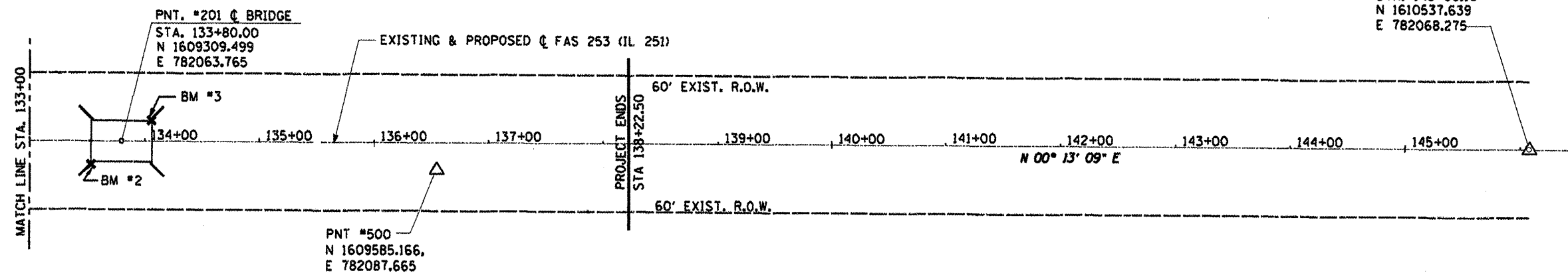
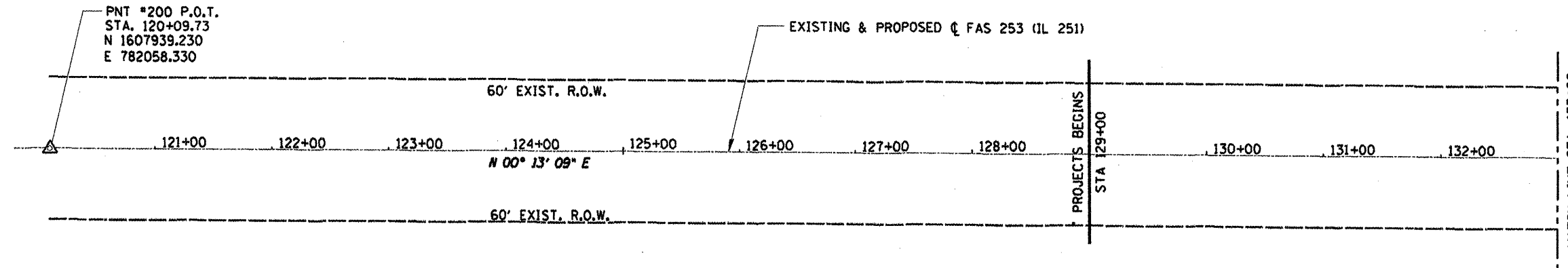


CONTRACT NO. 68573				
F.A.S. RTE.	SECTION	COUNTY	TOTAL SHEETS	SHEET NO.
253	68 BR-1	MARSHALL	97	66
STA. 129+00 TO STA. 138+00				
FED. ROAD DIST. NO. ILLINOIS FED. AID PROJECT				



● DENOTES 3/8" Ø REBAR W/CAP

**PNT. #200 P.O.T.
STA. 120+09.73**

PNT #500	80d SPIKE IN GROUND STA. 136+55.76, 23.03' RT. ELEV. 640.55
BM #2	CHISELED "□" TOP OF S.E. ABUTMENT CORNER STA. 133+53.70, 20.96' RT. ELEV. 641.50
BM #3	CHISELED "□" TOP OF N.W. ABUTMENT CORNER STA. 134+06.25, 18.20' LT. ELEV. 641.63

S D I STRUCTURE DESIGNS, INCORPORATED
ARCHITECTS & ENGINEERS
PH: (773) 838-1780 • www.structuredesigninc.com

REVISIONS	
NAME	DATE

ILLINOIS DEPARTMENT OF TRANSPORTATION
ALIGNMENT, TIES & BENCHMARKS
ILL. RTE. 251
OVER SANDY CREEK
F.A.S. 253 SEC. 68 BR-1
MARSHALL COUNTY
STA. 133+80.00 S.N. 062-008
DESIGNED BY: A.G. DRAWN BY: T.C.S.
DATE: 05/02/2008 CHECKED BY: D.A.O.