

BEAM 4 Contract #68573

Location	Station	Offset	Theoretical Grade Elevations	Theoretical Grade Elevations Adjusted For Dead Load Deflection
Bk. S. Abut.	133+41.50	-3.00	643.39	643.39
☉ Brg. S. Abut.	133+42.75	-3.00	643.39	643.39
A	133+52.75	-3.00	643.42	643.49
B	133+62.75	-3.00	643.43	643.57
C	133+72.75	-3.00	643.45	643.61
D	133+82.75	-3.00	643.45	643.63
E	133+92.75	-3.00	643.45	643.60
F	134+02.75	-3.00	643.44	643.55
☉ Brg. N. Abut.	134+17.25	-3.00	643.43	643.43
Bk. N. Abut.	134+18.50	-3.00	643.42	643.42

BEAM 5

Location	Station	Offset	Theoretical Grade Elevations	Theoretical Grade Elevations Adjusted For Dead Load Deflection
Bk. S. Abut.	133+41.50	-9.00	643.29	643.29
☉ Brg. S. Abut.	133+42.75	-9.00	643.30	643.30
A	133+52.75	-9.00	643.32	643.39
B	133+62.75	-9.00	643.34	643.47
C	133+72.75	-9.00	643.35	643.52
D	133+82.75	-9.00	643.36	643.53
E	133+92.75	-9.00	643.36	643.51
F	134+02.75	-9.00	643.35	643.45
☉ Brg. N. Abut.	134+17.25	-9.00	643.33	643.33
Bk. N. Abut.	134+18.50	-9.00	643.33	643.33

BEAM 6

Location	Station	Offset	Theoretical Grade Elevations	Theoretical Grade Elevations Adjusted For Dead Load Deflection
Bk. S. Abut.	133+41.50	-15.00	643.19	643.19
☉ Brg. S. Abut.	133+42.75	-15.00	643.19	643.19
A	133+52.75	-15.00	643.21	643.28
B	133+62.75	-15.00	643.23	643.36
C	133+72.75	-15.00	643.24	643.41
D	133+82.75	-15.00	643.25	643.42
E	133+92.75	-15.00	643.25	643.40
F	134+02.75	-15.00	643.24	643.34
☉ Brg. N. Abut.	134+17.25	-15.00	643.22	643.22
Bk. N. Abut.	134+18.50	-15.00	643.22	643.22

S D I STRUCTURE DESIGNS, INCORPORATED
ARCHITECTS & ENGINEERS
PH: (773) 838-1780 • www.structuredesignsinc.com

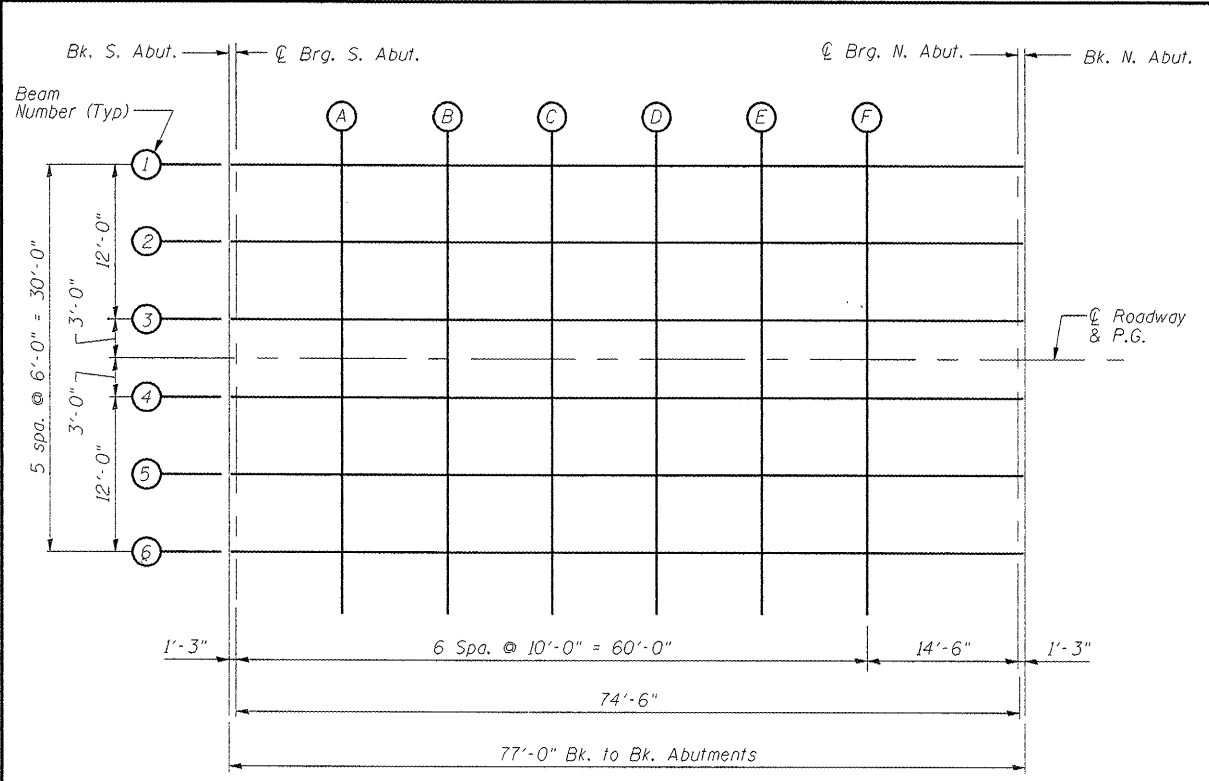
ILLINOIS DEPARTMENT OF TRANSPORTATION

TOP OF SLAB ELEVATIONS

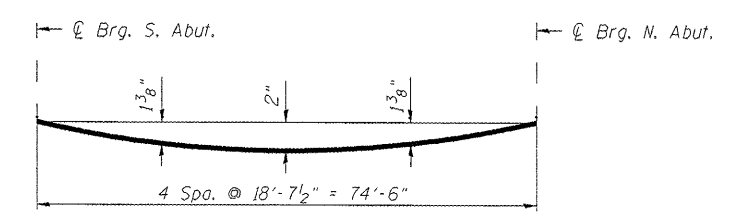
ILL. RTE. 251
OVER SANDY CREEK
F.A.S. 253 SEC. 68 BR-1
MARSHALL COUNTY

STA. 133+80.00 S.N. 062-0085
DESIGNED BY: S.G. DRAWN BY: T.C.S.
DATE: 11-20-08 CHECKED BY: O.A.O.

REVISIONS	
NAME	DATE

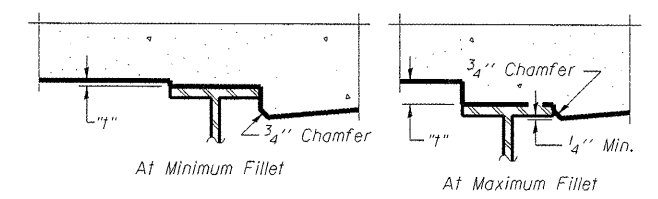


PLAN



DEAD LOAD DEFLECTION DIAGRAM
(Includes weight of concrete only.)

Note:
The above deflections are not to be used in the field if the engineer is working from the grade elevations adjusted for dead load deflections as shown below.



FILLET HEIGHTS

To determine "f": After all structural steel has been erected, elevations of the top flanges of the beams shall be taken at intervals shown below. These elevations subtracted from the "Theoretical Grade Elevations Adjusted For Dead Load Deflection" shown below, minus slab thickness, equals the fillet heights "f" above top flange of beams.

BEAM 1

Location	Station	Offset	Theoretical Grade Elevations	Theoretical Grade Elevations Adjusted For Dead Load Deflection
Bk. S. Abut.	133+41.50	15.00	643.19	643.19
☉ Brg. S. Abut.	133+42.75	15.00	643.19	643.19
A	133+52.75	15.00	643.21	643.28
B	133+62.75	15.00	643.23	643.36
C	133+72.75	15.00	643.24	643.41
D	133+82.75	15.00	643.25	643.42
E	133+92.75	15.00	643.25	643.40
F	134+02.75	15.00	643.24	643.34
☉ Brg. N. Abut.	134+17.25	15.00	643.22	643.22
Bk. N. Abut.	134+18.50	15.00	643.22	643.22

BEAM 3

Location	Station	Offset	Theoretical Grade Elevations	Theoretical Grade Elevations Adjusted For Dead Load Deflection
Bk. S. Abut.	133+41.50	3.00	643.39	643.39
☉ Brg. S. Abut.	133+42.75	3.00	643.39	643.39
A	133+52.75	3.00	643.42	643.49
B	133+62.75	3.00	643.43	643.57
C	133+72.75	3.00	643.45	643.61
D	133+82.75	3.00	643.45	643.63
E	133+92.75	3.00	643.45	643.60
F	134+02.75	3.00	643.44	643.55
☉ Brg. N. Abut.	134+17.25	3.00	643.43	643.43
Bk. N. Abut.	134+18.50	3.00	643.42	643.42

☉ ROADWAY & P.G.

Location	Station	Offset	Theoretical Grade Elevations	Theoretical Grade Elevations Adjusted For Dead Load Deflection
Bk. S. Abut.	133+41.50	0.00	643.43	643.43
☉ Brg. S. Abut.	133+42.75	0.00	643.44	643.44
A	133+52.75	0.00	643.46	643.53
B	133+62.75	0.00	643.48	643.61
C	133+72.75	0.00	643.49	643.66
D	133+82.75	0.00	643.50	643.67
E	133+92.75	0.00	643.50	643.65
F	134+02.75	0.00	643.49	643.59
☉ Brg. N. Abut.	134+17.25	0.00	643.47	643.47
Bk. N. Abut.	134+18.50	0.00	643.47	643.47

BEAM 2

Location	Station	Offset	Theoretical Grade Elevations	Theoretical Grade Elevations Adjusted For Dead Load Deflection
Bk. S. Abut.	133+41.50	9.00	643.29	643.29
☉ Brg. S. Abut.	133+42.75	9.00	643.30	643.30
A	133+52.75	9.00	643.32	643.39
B	133+62.75	9.00	643.34	643.47
C	133+72.75	9.00	643.35	643.52
D	133+82.75	9.00	643.36	643.53
E	133+92.75	9.00	643.36	643.51
F	134+02.75	9.00	643.35	643.45
☉ Brg. N. Abut.	134+17.25	9.00	643.33	643.33
Bk. N. Abut.	134+18.50	9.00	643.33	643.33

E-S

11-1-06