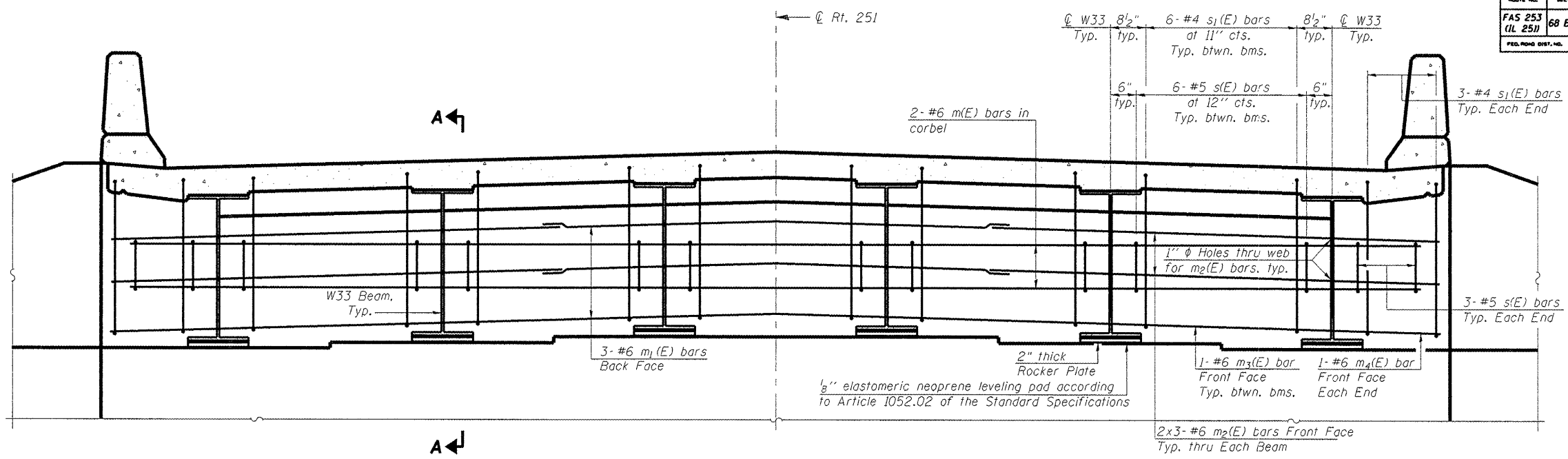


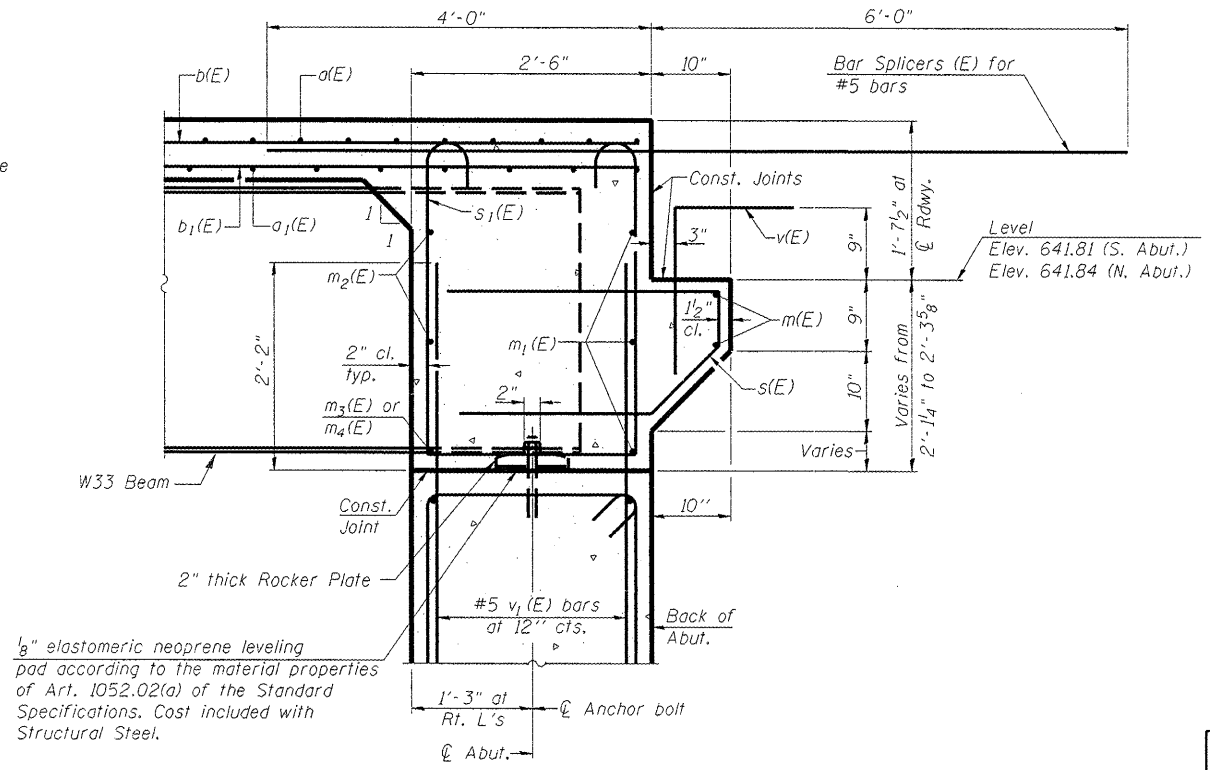
ROUTE NO.	SECTION	COUNTY	SHEET	SHEET	SHEET NO.
FAS 253 (IL 251)	68 BR-1	MARSHALL	97	78	15 SHEETS
FED. ROAD DIST. NO.		LANDS	FED. AID PROJECT		
			Contract #68573		



DIAPHRAGM ELEVATION AT ABUTMENT

Notes:
 Reinforcement bars in diaphragm are billed with superstructure on sheet 6 of 15.
 Concrete in diaphragm is included with Concrete Superstructure on sheet 6 of 15.
 For details of bars s(E) & s₁(E) see sheet 6 of 15.
 The s(E) and s₁(E) bars shall be placed parallel to the beams. Spacing for these bars shall be at right angles to the beams.

MIN. BAR LAP
 #6 bar = 3'-7"



SECTION A-A

Dimensions at right angles to abutment, except as shown.
 For details of Bar Splicers, see sheet 13 of 15.

REVISIONS	
NAME	DATE

SDI STRUCTURE DESIGNS, INCORPORATED
 ARCHITECTS & ENGINEERS
 PH: (773) 638-1780 • www.structuredesigninc.com

ILLINOIS DEPARTMENT OF TRANSPORTATION

CONCRETE DIAPHRAGM DETAILS

ILL. RTE. 251
 OVER SANDY CREEK
 F.A.S. 253 SEC. 68 BR-1
 MARSHALL COUNTY
 STA. 133+80.00 S.N. 062-0085

DESIGNED BY: S.G. DRAWN BY: T.C.S.
 DATE: 11-20-08 CHECKED BY: O.A.O.

SI-DS1

9-3-07