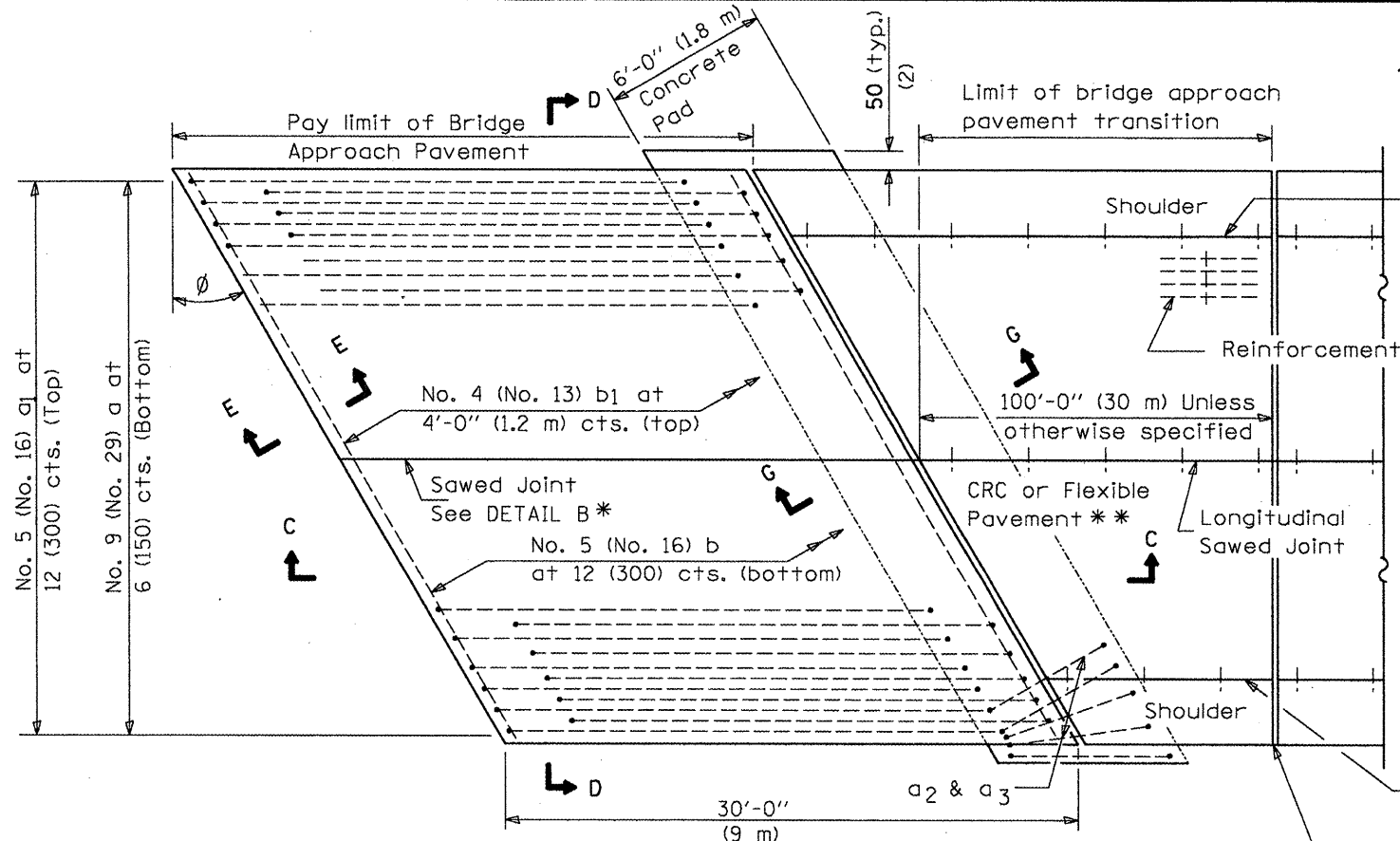
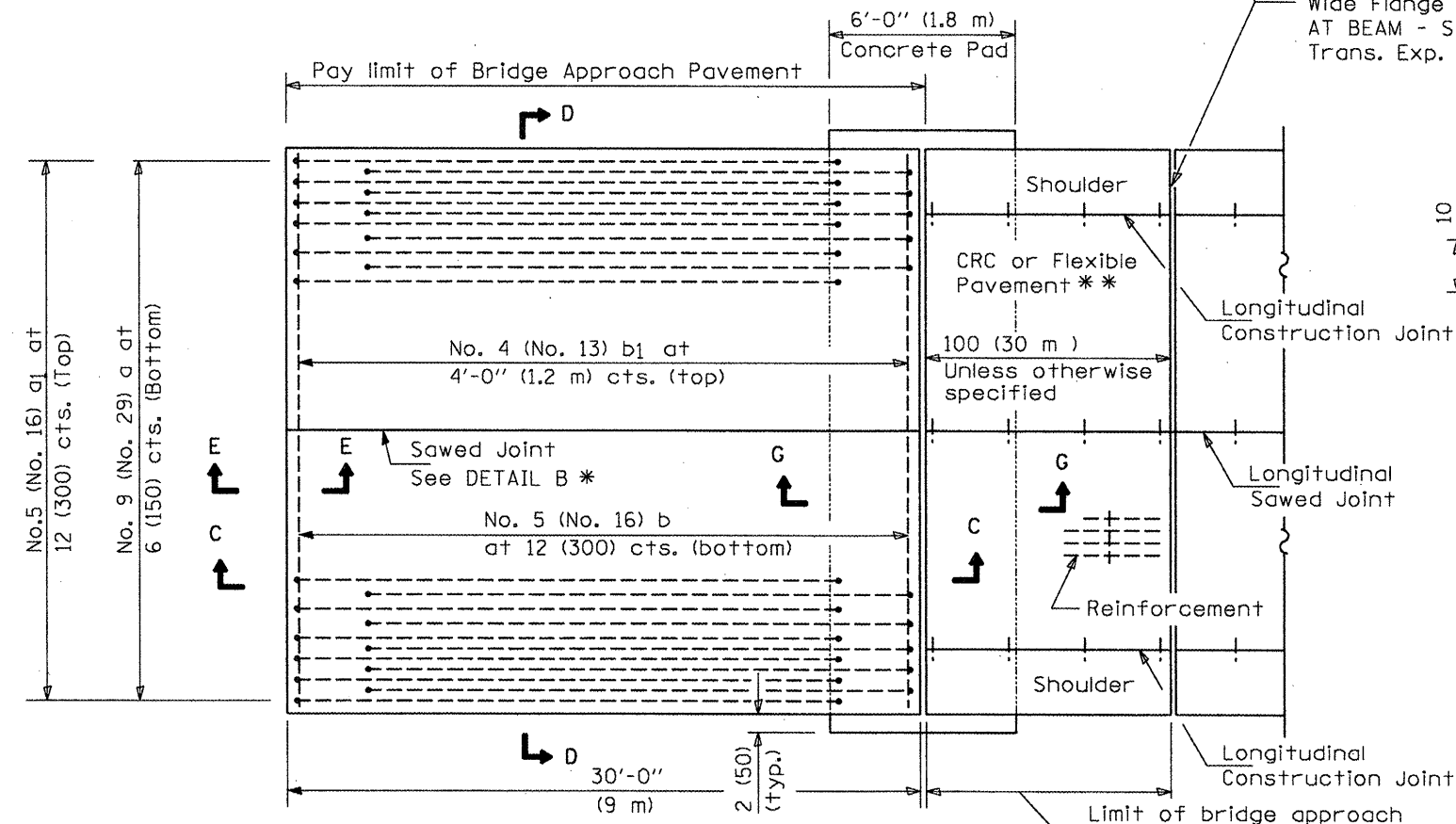


F.A.P. RTE.	SECTION	COUNTY	TOTAL SHEETS	SHEET NO.
253	68(BR, BR-1)	MARSHALL	97	94
FED. ROAD DIST. NO. 4		ILLINOIS	CONTRACT NO. 68573	

**NEW CONSTRUCTION**

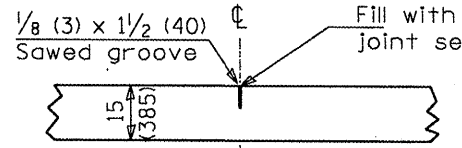


**PLAN - WITH SKEW**

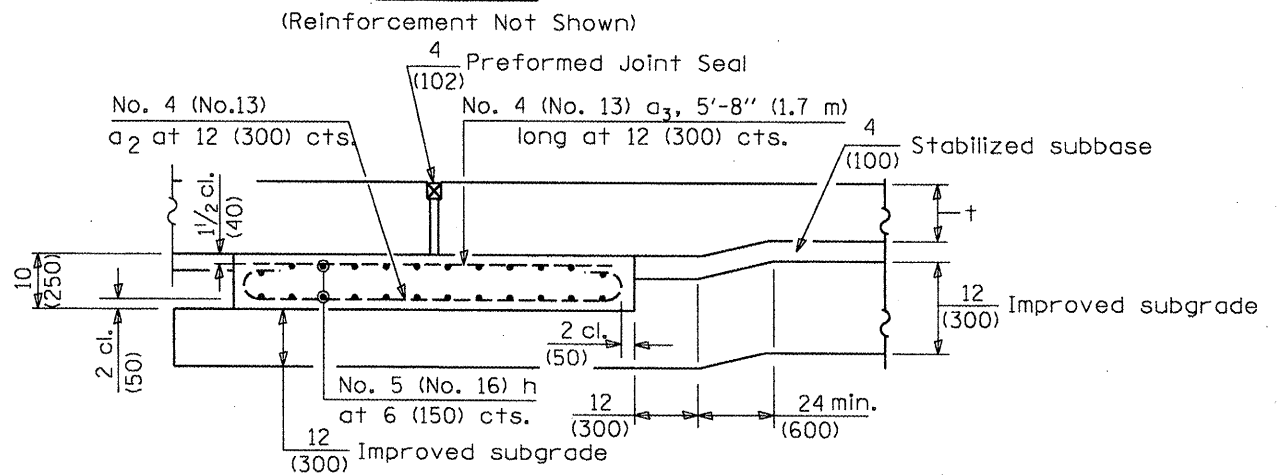


**PLAN - WITHOUT SKEW**

\* Saw  $\phi$  or lane edge if poured two or more lane widths at a time.  
 \*\* Omit Reinforcement, tie bars and Long. sawed Jt. for Flexible Pavement.



**DETAIL B\***

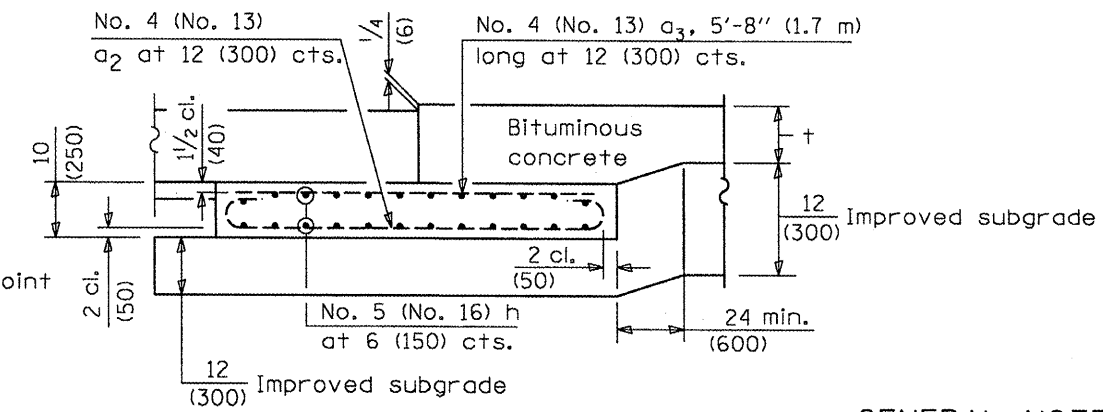


**SECTION G-G - RIGID PAVEMENT**

(Showing reinforcement)

Rigid Pavement only:

Wide Flange Beam Terminal Joint (See DETAIL AT BEAM - Standard 421101 or 421106) or 2 (50) Trans. Exp. Joint as detailed on Standard 420001.



**SECTION G-G - FLEXIBLE PAVEMENT**

(Showing reinforcement)

**GENERAL NOTES**

THICKNESS-"t"=Thickness of Pavement.  
 See Standard 421001 for reinforcement details not shown.  
 See Standard 420001 for joint details not shown.  
 All dimensions are in Inches (millimeters) unless otherwise shown.

**BRIDGE APPROACH PAVEMENT**