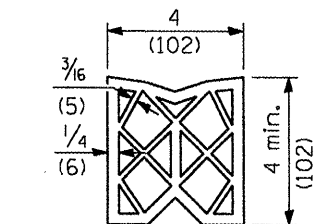
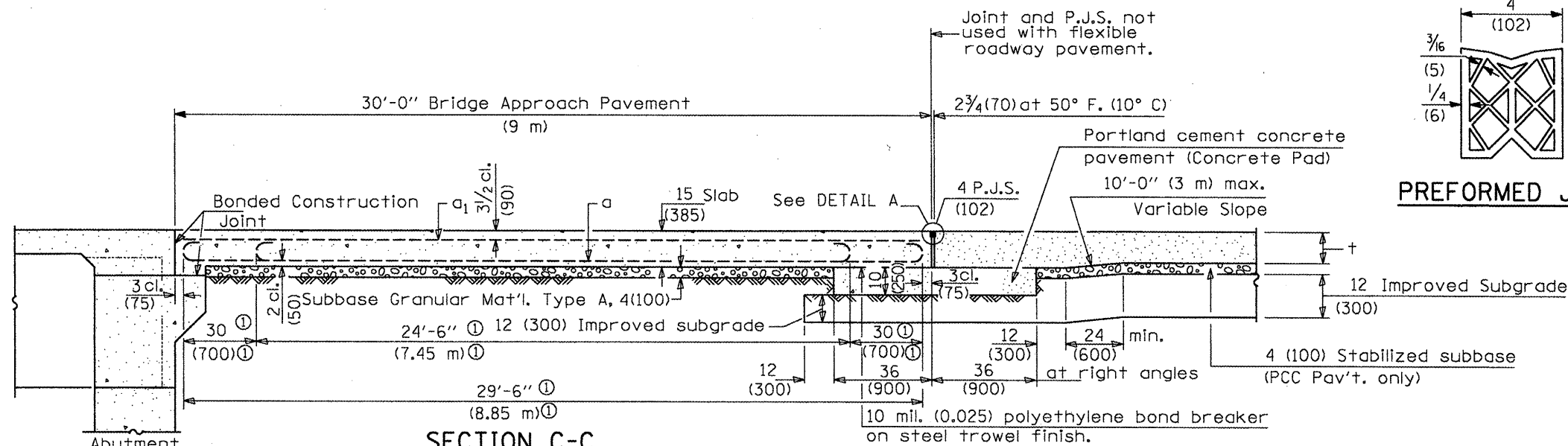
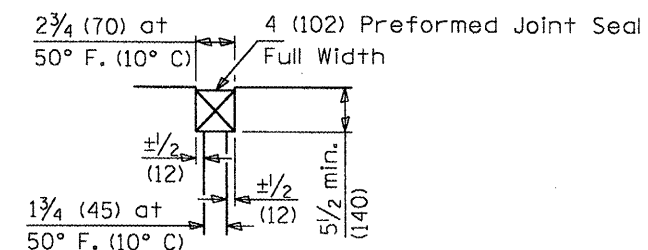


F.A.P. RTE.	SECTION	COUNTY	TOTAL SHEETS	SHEET NO.
253	68(BR, BR-1)	MARSHALL	97	96
FED. ROAD DIST. NO. 4	ILLINOIS	CONTRACT NO. 68573		

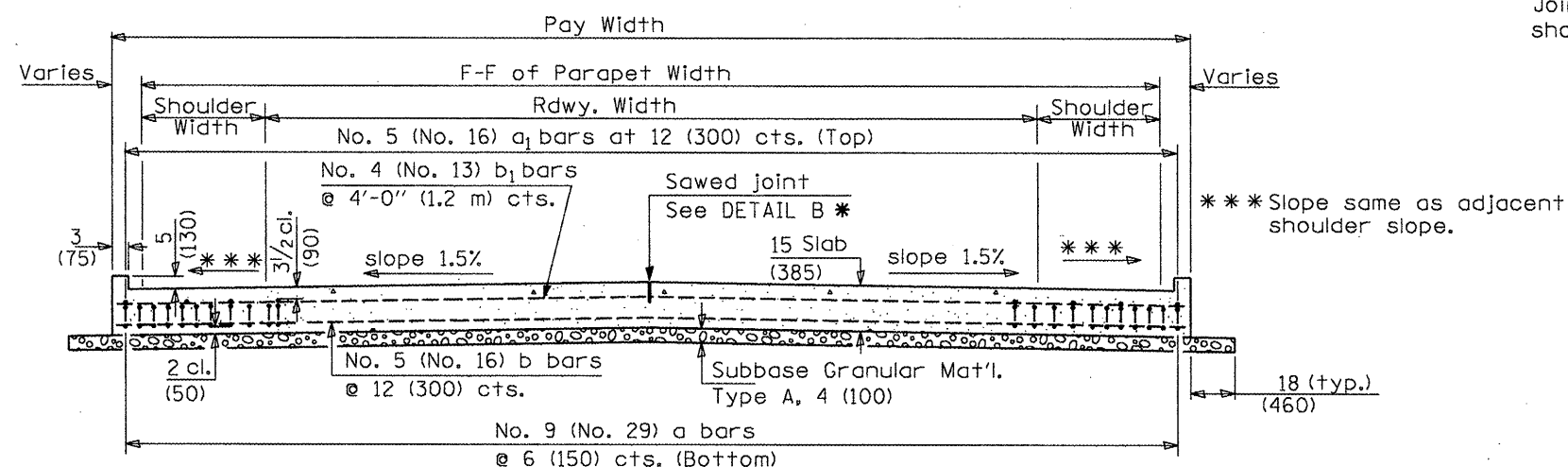


**PREFORMED JOINT SEAL**



**DETAIL A**

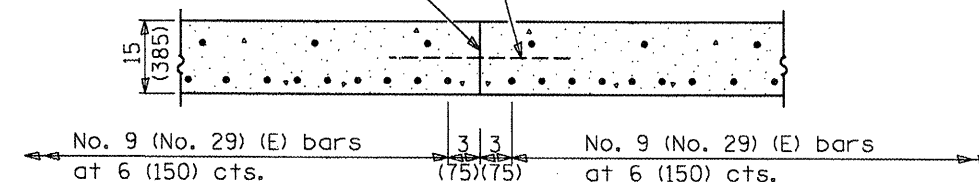
① Stagger No. 9 (No. 29) a bars as shown on plan - full width



**SECTION D-D**

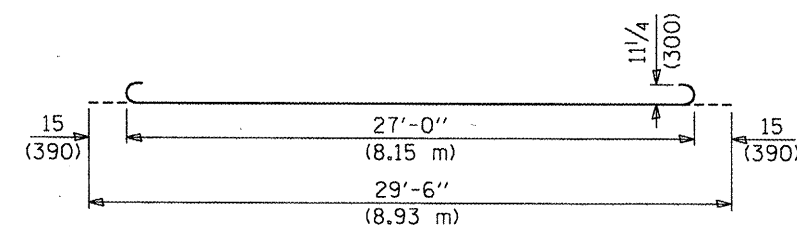
(See Plan for Dimensions not shown)

Longitudinal Construction Joint in accordance with details shown on Standard 420001.

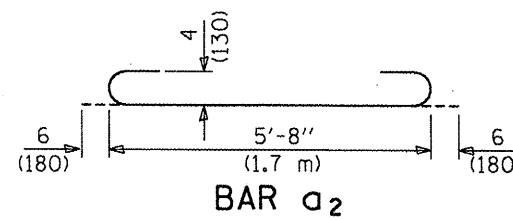


**OPTIONAL LONGITUDINAL CONSTRUCTION JOINT**

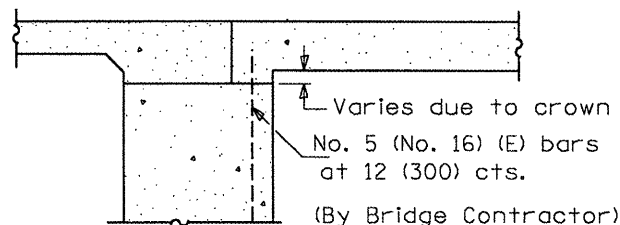
As approved by the Engineer, the Contractor may elect to reduce the widths of pour by use of the Optional Longitudinal Construction Joint shown. Joints shall be located at the edge of a traffic lane.



**BAR a**

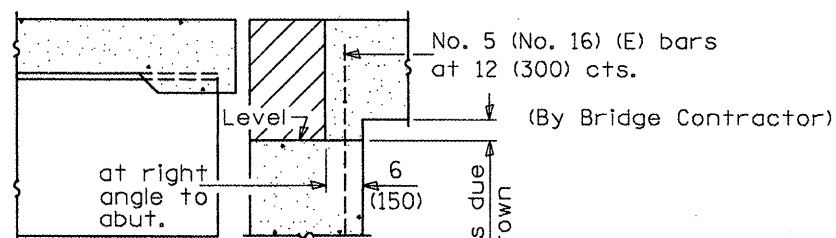


**BAR a2**



**SECTION E-E**

(Integral Abutments)



**SECTION E-E**

(Jointed Abutments)

**DESIGN STRESSES**

$f_y = 60,000$  p.s.i. (400 MPa)  
 $f'_c = 3,500$  p.s.i. (24 MPa)  
 $n = 8.5$

**BRIDGE APPROACH PAVEMENT**

(Sheet 3 of 4)