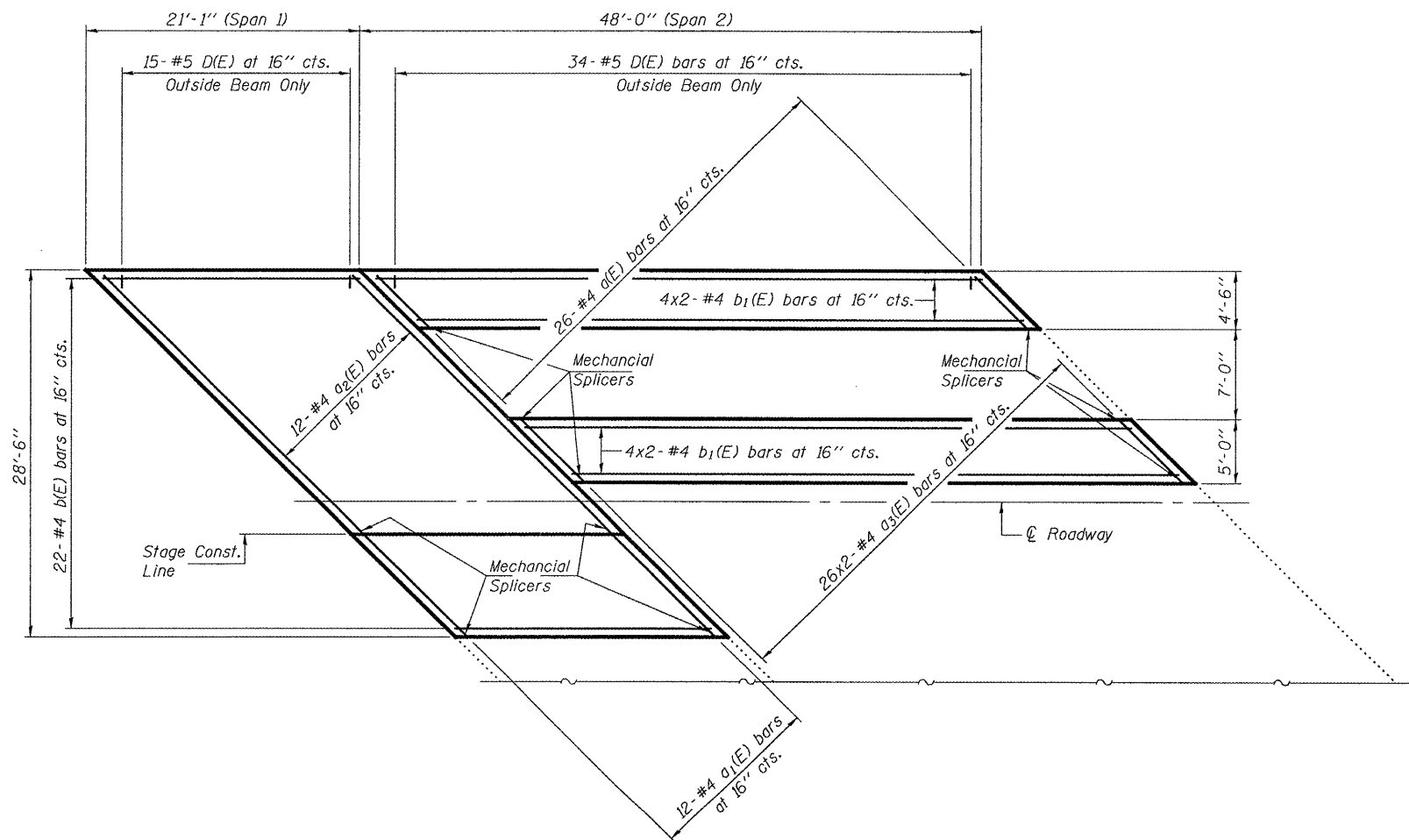
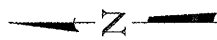
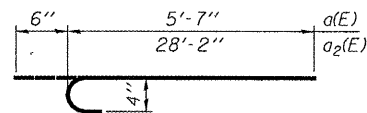


STATE OF ILLINOIS  
DEPARTMENT OF TRANSPORTATION

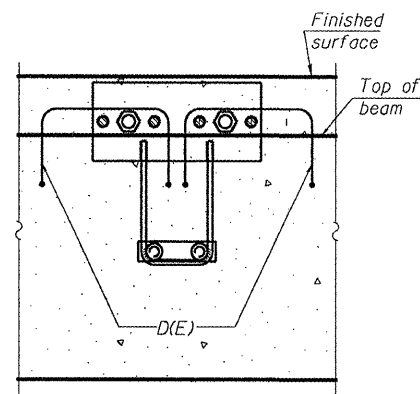


**PARTIAL PLAN - CONCRETE SLAB**  
(Showing Reinforcement)

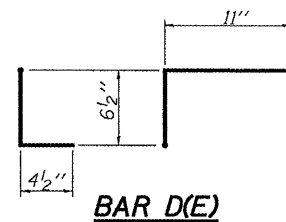
**MIN. BAR LAP**  
#4 Bars = 1'-8"



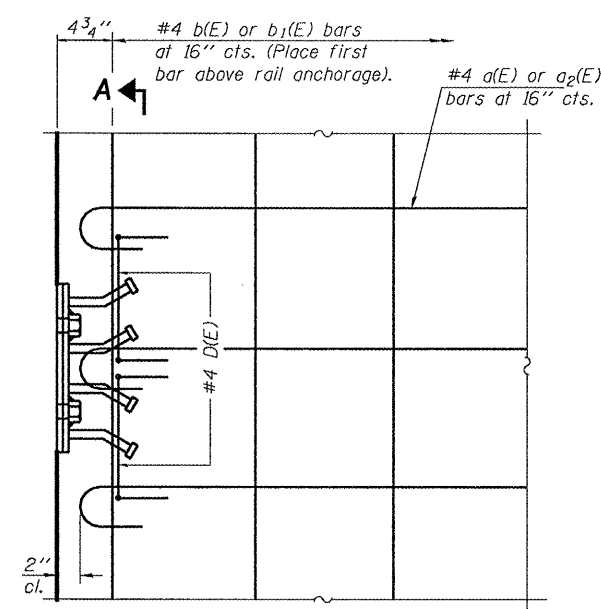
**a1(E) & a2(E) BARS**



**SECTION A-A**

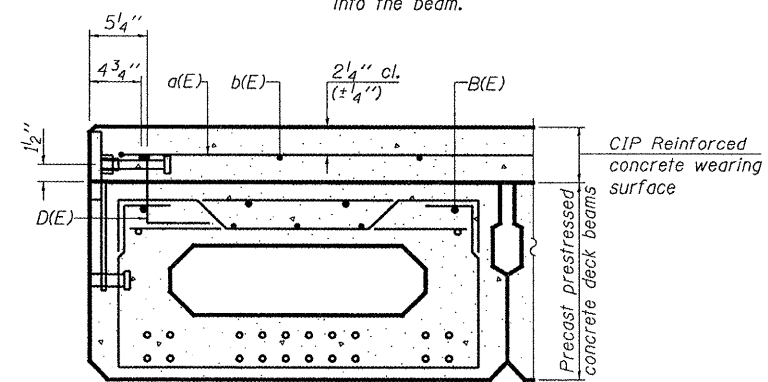


**BAR D(E)**



**PLAN**

Notes:  
Formwork necessary for the wearing surface may be secured utilizing the bottom rail anchorage inserts and/or additional inserts cast into the beam.



**CROSS SECTION**

**BILL OF MATERIAL**

Bar	No.	Size	Length	Shape
a(E)	26	#4	6'-1"	┌
a1(E)	12	#4	11'-3"	┌
a2(E)	12	#4	28'-8"	┌
a3(E)	52	#4	6'-0"	┌
b(E)	22	#4	20'-9"	┌
b1(E)	16	#4	25'-0"	┌
Mechanical Splice			Each	102
Reinforcement Bars, Epoxy Coated			Pound	1210

Bars indicated thus 4 x 2-#4 etc. indicates 4 lines of bars with 2 lengths per line.

DESIGNED	ATH
CHECKED	AJB
DRAWN	Kyle M. Steffen
CHECKED	ATH AJB

NOVEMBER 6, 2008  
 EXAMINED *A. Carl Perry*  
 ENGINEER OF STRUCTURAL SERVICES  
 PASSED *Ralph E. Anderson*  
 ENGINEER OF BRIDGES AND STRUCTURES

**SUPERSTRUCTURE DETAILS**  
**US ROUTE 67 OVER**  
**FARMER'S FORK**  
**SN 055-0027**

SHEET NO. 2	F.A.P. RTE.	SECTION	COUNTY	TOTAL SHEETS	SHEET NO.
	310	-	McDONOUGH	10	11
7 SHEETS	CONTRACT NO.				
FED. ROAD DIST. NO.		ILLINOIS FED. AID PROJECT			