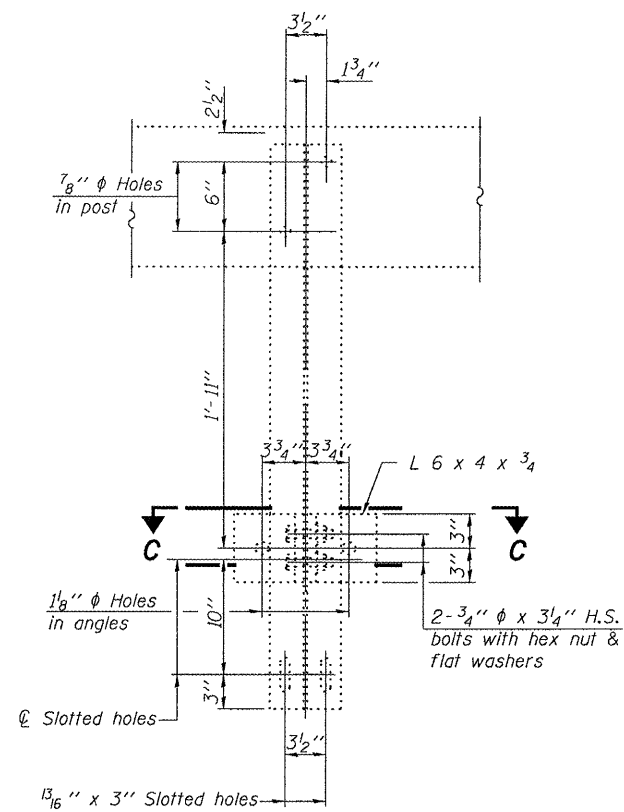
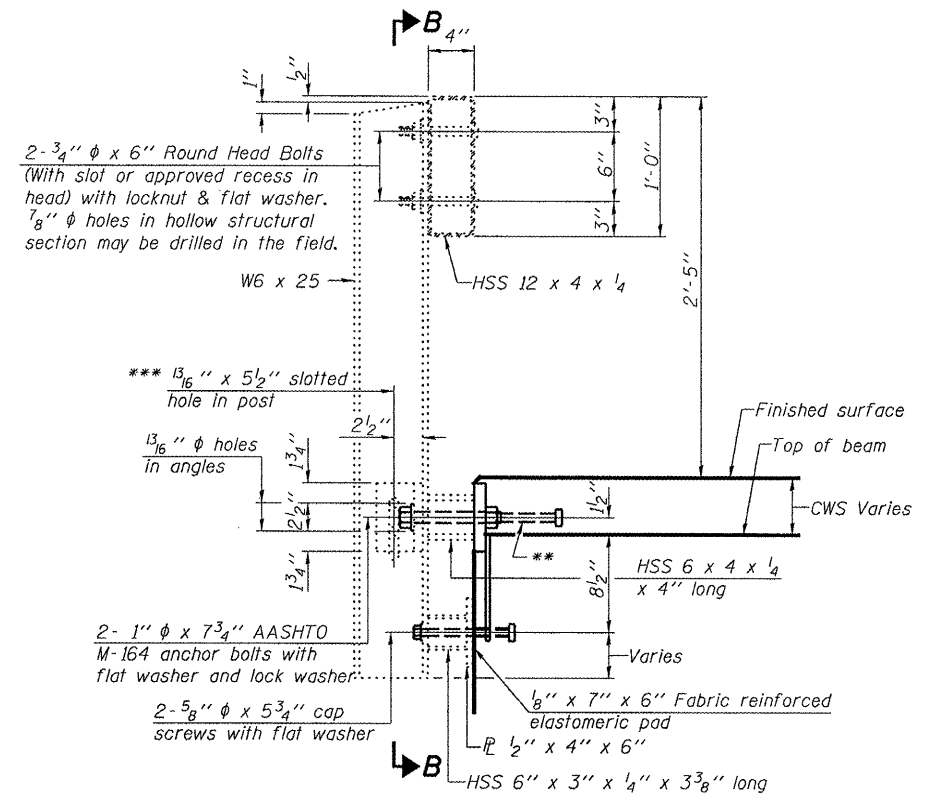


STATE OF ILLINOIS  
DEPARTMENT OF TRANSPORTATION



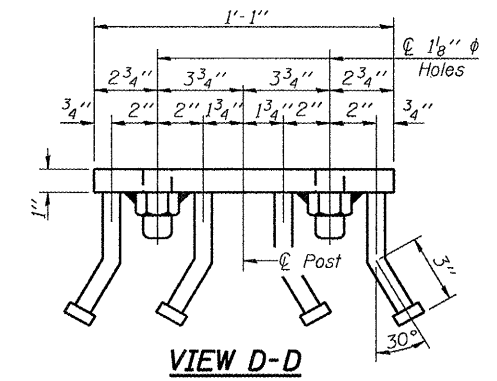
**SECTION B-B**



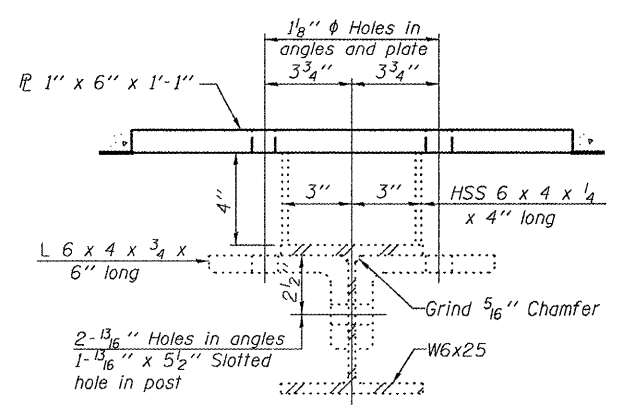
**SECTION AT RAIL POST**

\*\* The studs of the anchor devices shall be placed below the top reinforcement bars and the outermost longitudinal reinforcement bar shall be placed directly above the studs of the rail post anchor device.

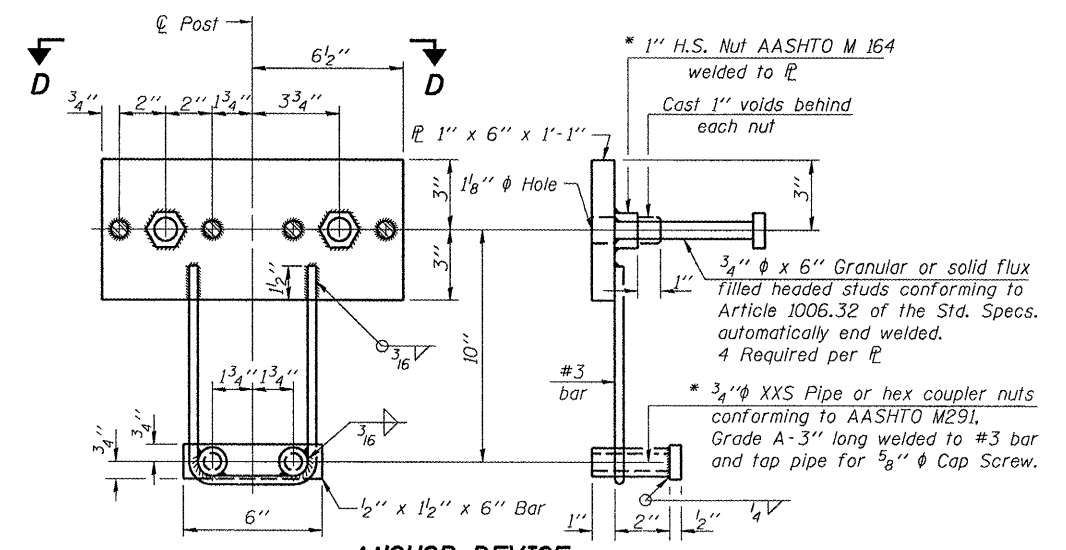
\*\*\* Extend slot in field as required. Cost included with Removing & Re-erecting Existing Railing.



**VIEW D-D**



**SECTION C-C**



**ANCHOR DEVICE**

\* Threaded areas shall be plugged or blocked off during casting of beam.

DESIGNED	ATH
CHECKED	AJB
DRAWN	Kyle M. Steffen
CHECKED	ATH AJB

NOVEMBER 6, 2008  
 EXAMINED *Carl Koenig*  
 ENGINEER OF STRUCTURAL SERVICES  
 PASSED *Ralph E. Anderson*  
 ENGINEER OF BRIDGES AND STRUCTURES

**RAILING DETAILS  
 US ROUTE 67 OVER  
 FARMER'S FORK  
 SN 055-0027**

SHEET NO. 7 7 SHEETS	F.A.P. RTE. 310	SECTION -	COUNTY McDONOUGH	TOTAL SHEETS 16	SHEET NO. 16
	CONTRACT NO.				
FED. ROAD DIST. NO.		ILLINOIS FED. AID PROJECT			