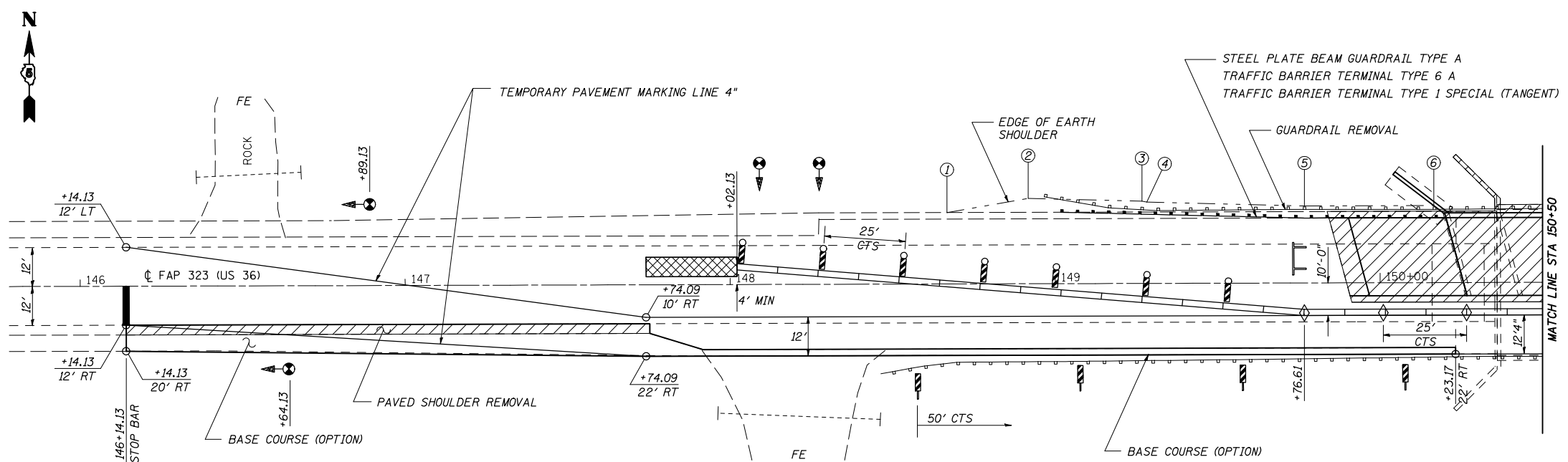


F.A.P. RTE.	SECTION	COUNTY	TOTAL SHEETS	SHEET NO.
323	145BR-1	DOUGLAS	39	13
STA.		TO STA.		
FED. ROAD DIST. NO.		ILLINOIS	FED. AID PROJECT	
CONTRACT NO. 70393				



- PRELIMINARY PHASE**
1. REMOVE EXISTING PAVED SHOULDER RT STA 146+14.13 TO RT STA 147+75.24 AND RT STA 152+92.58 TO RT STA 154+89.12
 2. CONSTRUCT BASE COURSE (OPTION) RT STA 146+14.13 TO STA 150+23.17 AND RT STA 150+90.08 TO STA 154+89.12
 3. INSTALL TEMPORARY SIGNALS AND TRAFFIC CONTROL DEVICES
- STAGE 1**
1. INSTALL TEMPORARY CONCRETE BARRIER AND IMPACT ATTENUATORS
 2. REMOVE EXISTING PAVEMENT MARKINGS AND INSTALL TEMPORARY PAVEMENT MARKINGS
 3. REMOVE GUARDRAIL, TERMINALS, & BRIDGE RAIL
 4. REMOVE PAVEMENT, APPROACH SLAB, PAVED SHOULDER
 5. REMOVE STRUCTURE
 6. CONSTRUCT STRUCTURE
 7. PLACE POROUS GRANULAR BACKFILL
 8. CONSTRUCT APPROACH PAVEMENT AND CONNECTOR
 9. WIDEN EARTH SHOULDERS
 10. INSTALL BRIDGE RAIL, GUARDRAIL, AND TERMINALS
 11. CONSTRUCT TEMPORARY RAMPS

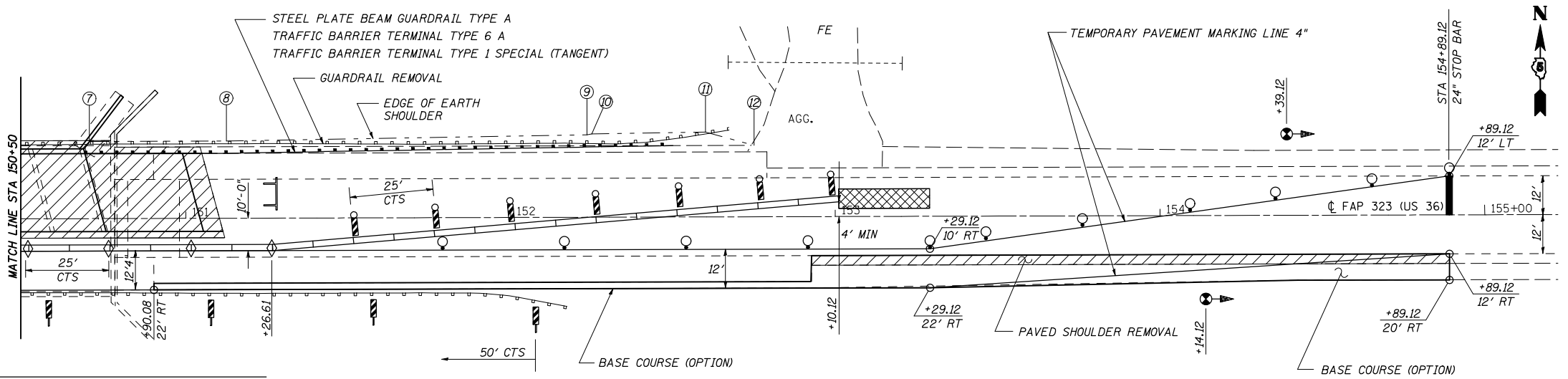
LEGEND

	TEMPORARY TRAFFIC SIGNALS		STEADY BURNING LIGHTS AND DOUBLE VERTICAL PANEL
	TEMPORARY IMPACT ATTENUATOR NON-DIRECTIVE TEST LEVEL 2		DOUBLE VERTICAL PANEL
	TEMPORARY CONCRETE BARRIER		TYPE C BIDIRECTIONAL REFLECTOR
	DRUM WITH STEADY BURNING LIGHT		INDICATES REMOVAL AREAS
	TYPE III BARRICADE		

SEE STANDARD 701321 FOR DETAILS NOT SHOWN
RUMBLE STRIPS WILL NOT BE REQUIRED

LEFT SHOULDER LAYOUT

POINT NO	STA	OFFSET
1	148+66.75	22.00
2	148+91.75	26.30
3	149+26.75	25.35
4	149+28.25	25.05
5	149+76.75	23.75
6	150+16.55	23.75
7	150+70.35	23.75
8	151+12.55	23.75
9	152+23.55	23.35
10	125+25.05	25.65
11	152+60.05	26.15
12	152+74.30	22.20



TEMPORARY PAVEMENT MARKING-LINE 4"

LOCATION	LINE TYPE & COLOR	TEMPORARY PAVEMENT MARKINGS	WORKZONE PAVEMENT MARKING REMOVAL
		FOOT	SQ FT
12' LT STA 146+14.13 TO	10' RT STA 147+74.09	SOLID WHITE EDGE LINE	162 54
10' RT STA 147+74.09 TO	10' RT STA 153+29.12	SOLID WHITE EDGE LINE	555 185
10' RT STA 153+29.12 TO	12' LT STA 154+89.12	SOLID WHITE EDGE LINE	162 54
12' RT STA 146+14.13 TO	22' RT STA 147+74.09	SOLID WHITE EDGE LINE	160 53
22' RT STA 147+74.09 TO	22' RT STA 153+29.12	SOLID WHITE EDGE LINE	555 185
22' RT STA 153+29.12 TO	12' RT STA 154+89.12	SOLID WHITE EDGE LINE	160 53
TOTAL			1,754 584

QUANTITIES FOR PLACEMENT AND REMOVAL OF TEMPORARY PAVEMENT MARKINGS ARE INCLUDED FOR INFORMATION ONLY. PLACING, MAINTAINING, AND REMOVING TEMPORARY PAVEMENT MARKINGS WILL NOT BE PAID FOR SEPARATELY BUT SHALL BE INCLUDED IN THE COST FOR TRAFFIC CONTROL AND PROTECTION STANDARD 701321

MATERIAL FOR TEMPORARY PAVEMENT MARKINGS SHALL BE AS SPECIFIED IN ARTICLE 703.05 OF THE STANDARD SPECIFICATIONS.

**TRAFFIC CONTROL & PROTECTION
STAGE 1**

**FAP ROUTE 323 (US 36)
SECTION 145BR-1
DOUGLAS COUNTY**

CUMMINS ENGINEERING CORPORATION	JOB #: 2114.6 FILE: 21146STAGE1 DATE: 5/2/07
---------------------------------	--