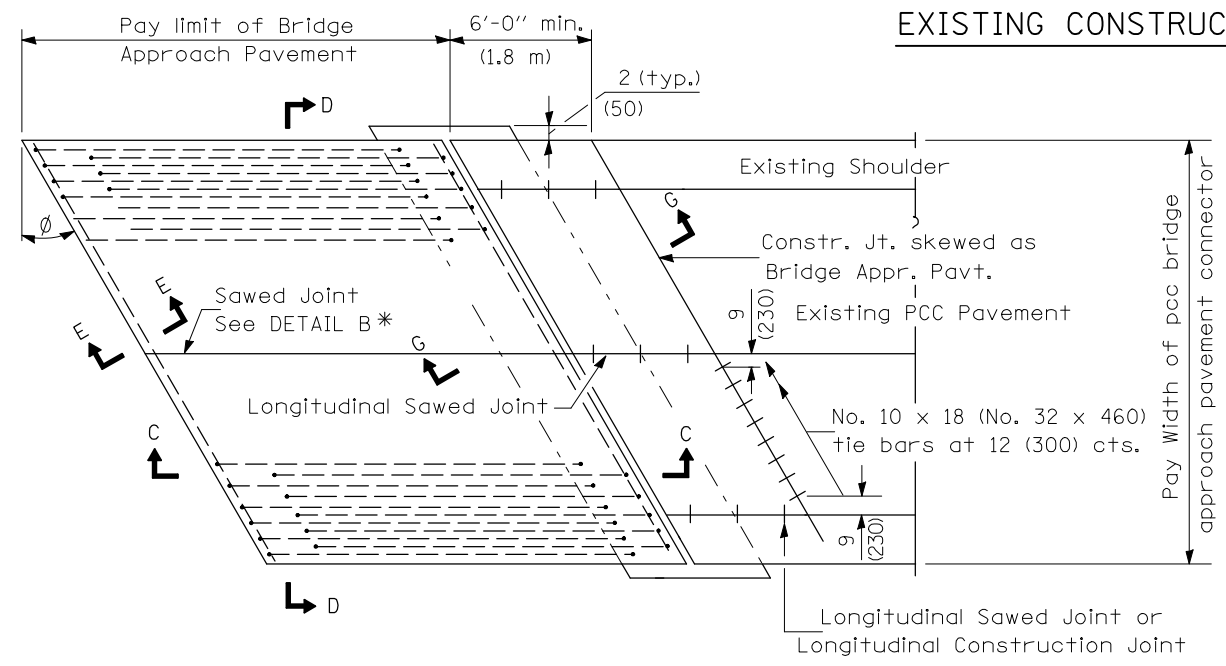
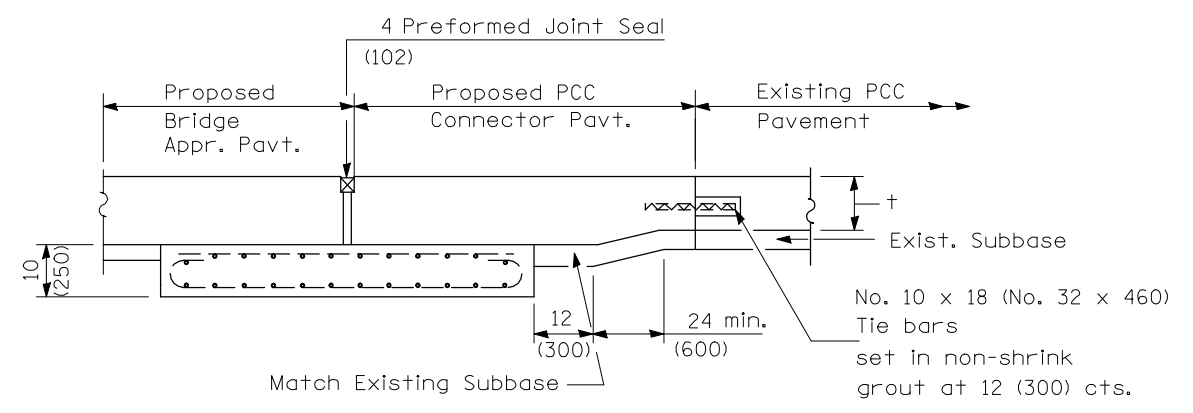


F.A.P. RTE.	SECTION	COUNTY	TOTAL SHEETS	SHEET NO.
323	145BR-1	DOUGLAS	39	24B
FED. ROAD DIST. NO.		ILLINOIS	FED. AID PROJECT	
CONTRACT NO. 70393				

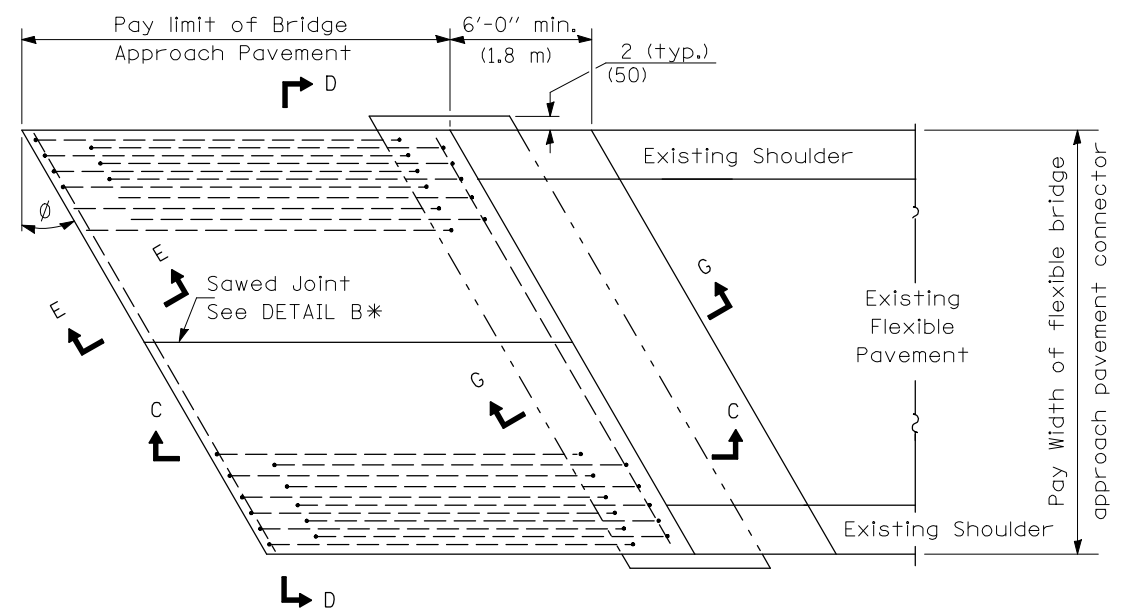


EXISTING CONSTRUCTION

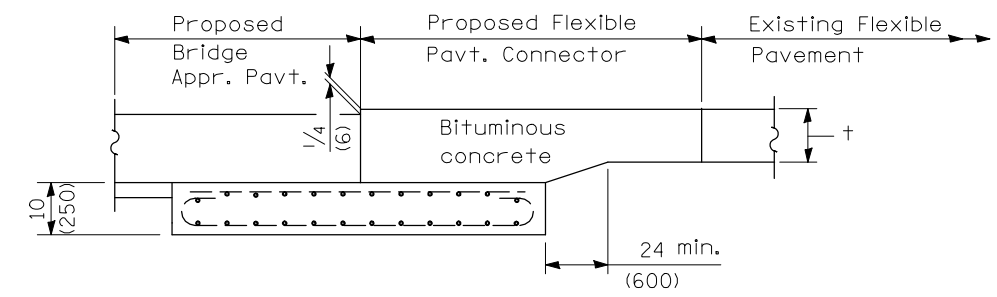
BRIDGE APPROACH PAVEMENT CONNECTOR (PCC)



SECTION G-G - RIGID PAVEMENT



BRIDGE APPROACH PAVEMENT CONNECTOR (FLEXIBLE)



SECTION G-G - FLEXIBLE PAVEMENT

DETAILS
BRIDGE APPROACH PAVEMENT
 FAP ROUTE 323 (US 36)
 SECTION 145BR-1
 DOUGLAS COUNTY
 (Sheet 2 of 4)