

F.A.S. RTE.	SECTION	COUNTY	TOTAL SHEETS	SHEET NO.
723		MONTGOMERY	4	1

(16R) RS-7; (17R) RS-7

STATE OF ILLINOIS
DEPARTMENT OF TRANSPORTATION

DIVISION OF HIGHWAYS

**PROPOSED
HIGHWAY PLANS**

FAS ROUTE 723 (NOKOMIS RD)
SECTION (16R)RS-7;(17R)RS-7
PROJECT
MONTGOMERY COUNTY

C-96-100-08

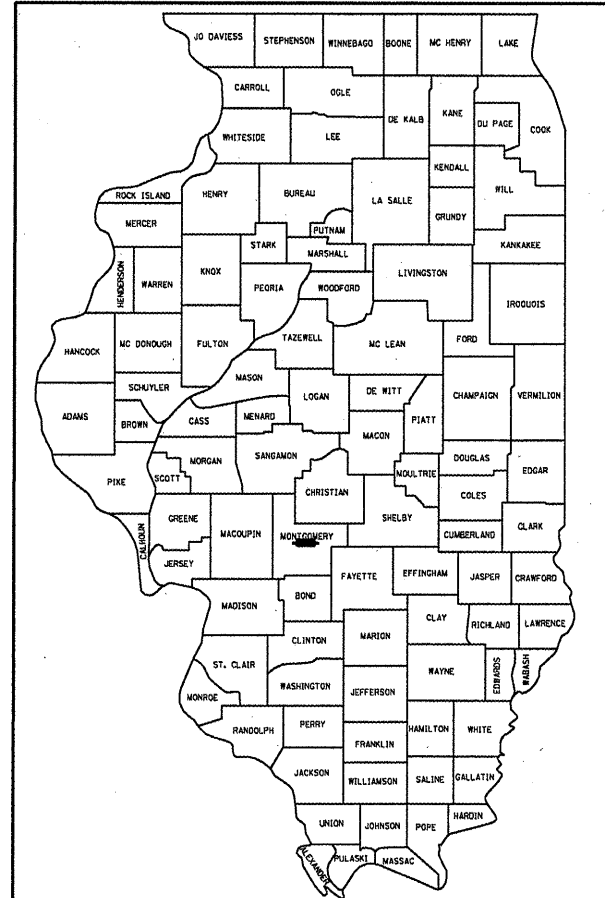
INDEX OF SHEETS

- 1 COVER SHEET
- 2 SUMMARY OF QUANTITIES
- 3 SCHEDULE OF QUANTITIES
- 4 TYPICAL SECTIONS

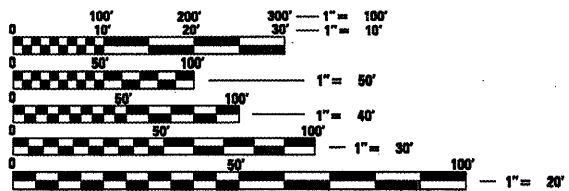
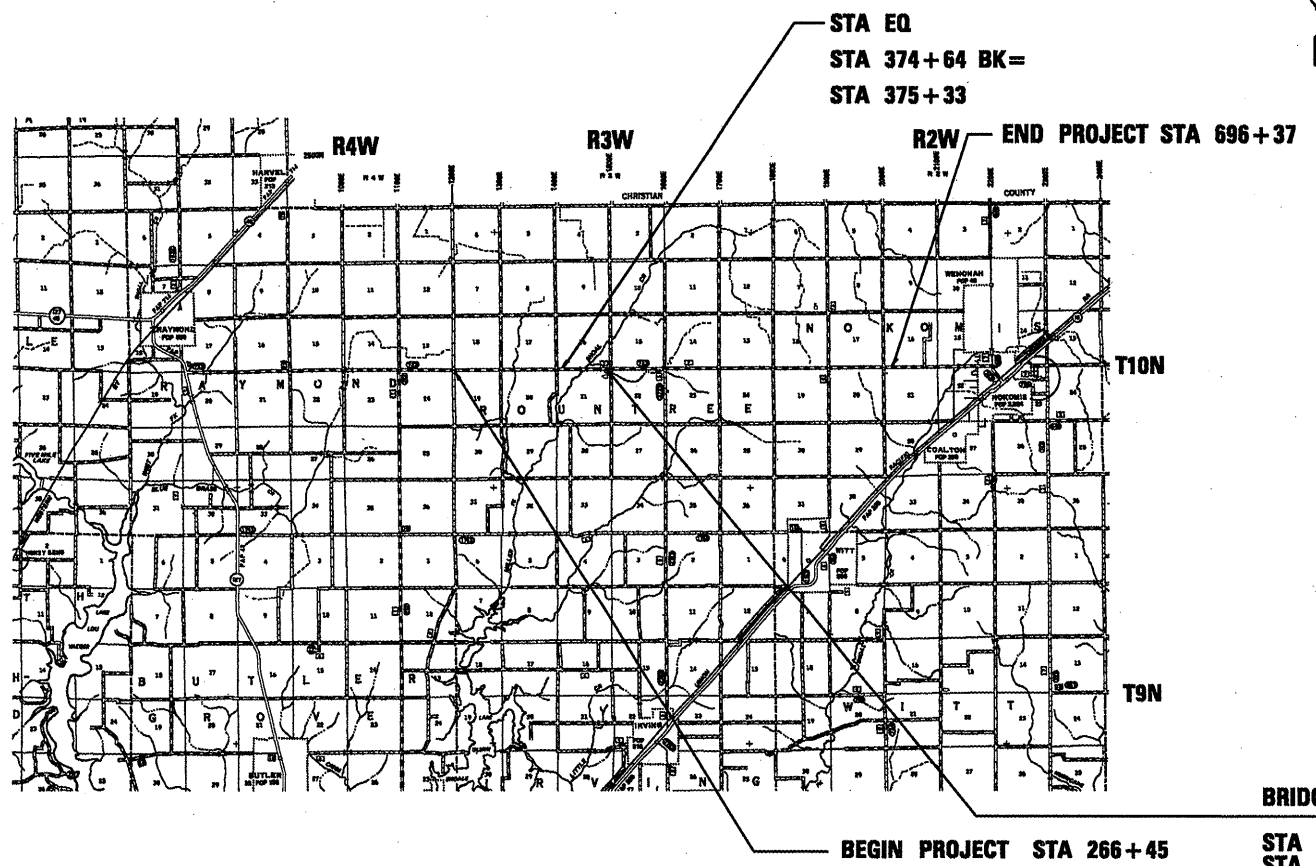
LIST OF STANDARDS

- 000001-05
- 442201-03
- 701001-02
- 701006-03
- 701011-02
- 701301-03
- 701306-02
- 701311-03
- 701901-01
- 780001-02
- 781001-03

D96-0100-08



LOCATION OF SECTION INDICATED THUS: -



FULL SIZE PLANS HAVE BEEN PREPARED USING STANDARD ENGINEERING SCALES. REDUCED SIZED PLANS WILL NOT CONFORM TO STANDARD SCALES. IN MAKING MEASUREMENTS ON REDUCED PLANS, THE ABOVE SCALES MAY BE USED.

J.U.L.I.E.
JOINT UTILITY LOCATION INFORMATION FOR EXCAVATION
1-800-892-0123

NET PROJECT LENGTH = 8.09 MILES

BRIDGE OMISSION

STA 390 + 83.5 TO
STA 393 + 09.5

STATE OF ILLINOIS
DEPARTMENT OF TRANSPORTATION
DIVISION OF HIGHWAYS

SUBMITTED Oct 10 20 08
Regis Z. Dinkel
DEPUTY DIRECTOR OF HIGHWAYS, REGION ENGINEER

December 5 20 08
Eric E. Harm
ENGINEER OF DESIGN AND ENVIRONMENT

December 5 20 08
Christine M. Reed
DIRECTOR OF HIGHWAYS, CHIEF ENGINEER

**PRINTED BY THE AUTHORITY
OF THE STATE OF ILLINOIS**

PROJECT ENGINEER: JOHN NEGANGARD 217 (782-6990)
SQUAD LEADER: VINCE MADONIA 217 (785-9046)

CONTRACT NO. 72C25

F.A. RTE.	SECTION	COUNTY	TOTAL SHEETS	SHEET NO.
723		MONTGOMERY	4	2
STA. 5+09		TO STA. 374+69		
FED. ROAD DIST. NO.		ILLINOIS FED. AID PROJECT		

(16R)RS-7; (17R)RS-7

				NOKOMIS BLACKTOP 100% STATE CONST. CODE F000
Code No.	Item	Unit	Total	
67100100	MOBILIZATION	L SUM	1.0	1.0
70100460	TRAFFIC CONTROL AND PROTECTION, STANDARD 701306	L SUM	1.0	1.0
70300100	SHORT-TERM PAVEMENT MARKING	FOOT	4270.0	4270.0
70301000	WORK ZONE PAVEMENT MARKING REMOVAL	SQ FT	1423.0	1423.0
*78001120	PAINT PAVEMENT MARKING - LINE 5"	FOOT	106,743	106,743
*78100100	RAISED REFLECTIVE PAVEMENT MARKER	EACH	534	534
X0320217	TEMPORARY <i>RAISED</i> PAVEMENT MARKER	EACH	2135	2135
78300200	RAISED REFLECTIVE PAVEMENT MARKER REMOVAL	EACH	534	534
X0324951	CAPE SEAL	SQ YD	104,370	104,370

PLOT DATE = 04-18-2008 08:48:07
 FILE NAME = c:\pwork\p1007\LAKE.LIN\LAKE.DWG
 PLOT SCALE = 1/8"=1'-0" / IN.
 USER NAME = laughlin1

Rev.

* Specialty Items

REVISIONS	
NAME	DATE

ILLINOIS DEPARTMENT OF TRANSPORTATION
 SUMMARY OF QUANTITIES
 FAS 723
 SECTION (16R)RS-7; (17R)RS-7
 MONTGOMERY COUNTY
 SCALE: VERT. DATE
 HORIZ. DATE
 DRAWN BY
 CHECKED BY

