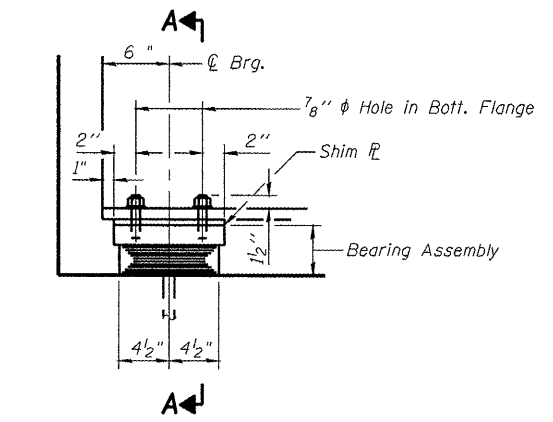
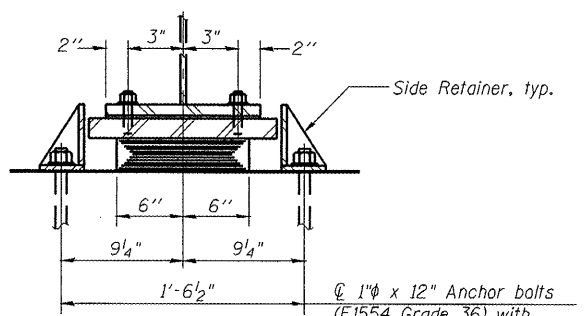


ROUTE NO.	SECTION	COUNTY	SHEET NO.	SHEET NO.
F.A.I. 55	(68-4)F	MONTGOMERY	25	14
FED. ROAD DIST. NO. 7	ILLINOIS	FED. AID PROJECT-		

Contract #72C32

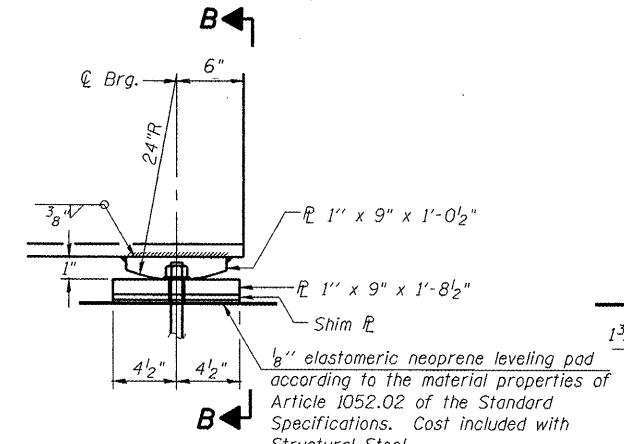


ELEVATION AT N. ABUT.

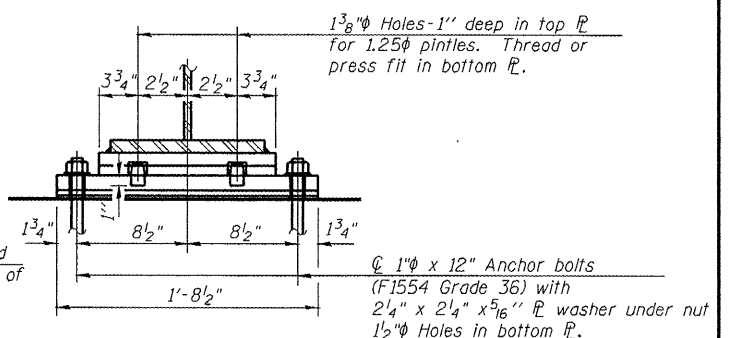


SECTION A-A

1" x 12" Anchor bolts (F1554 Grade 36) with 2 1/4" x 2 1/4" x 5/16" washer under nut



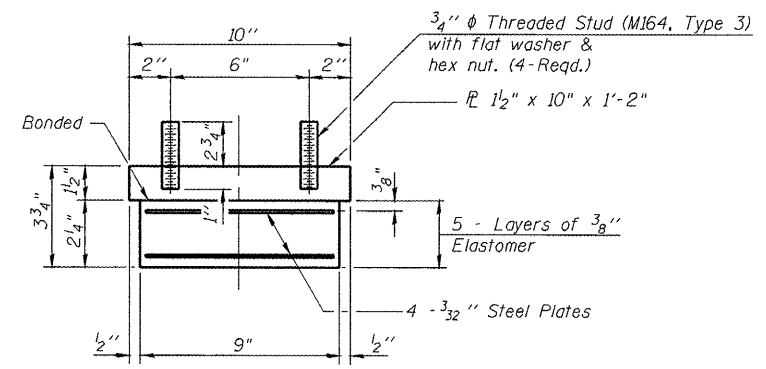
ELEVATION AT S. ABUT.



SECTION B-B

1" x 12" Anchor bolts (F1554 Grade 36) with 2 1/4" x 2 1/4" x 5/16" washer under nut 1 1/2" holes in bottom flange.

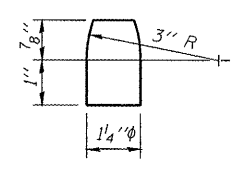
TYPE I ELASTOMERIC EXP. BRG.
(14 Required)



BEARING ASSEMBLY

Note: Shim plates shall not be placed under Bearing Assembly.

Notes:
Anchor bolts shall be ASTM F1554 all-thread (or an Engineer-approved alternate material) of the grade(s) and diameter(s) specified. ASTM A307 Grade C anchor bolts may be used in lieu of ASTM F1554 Grade 36 (Fy=36ksi). The corresponding specified grade of AASHTO M314 anchor bolts may be used in lieu of ASTM F1554.
Anchor bolts at fixed bearings may be either cast in place or installed in holes drilled after the supported member is in place.
Anchor bolts for side retainers may be cast in place or installed in holes drilled before or after members are in place.
Drilled and set anchor bolts shall be installed according to Article 521.06 of the Standard Specifications.
Side retainers and other steel members required for the bearing assembly shall be included in the cost of Elastomeric Bearing Assembly, Type I.
The structural steel plates of the bearing assembly shall conform to the requirements of AASHTO M270 Grade 50W.



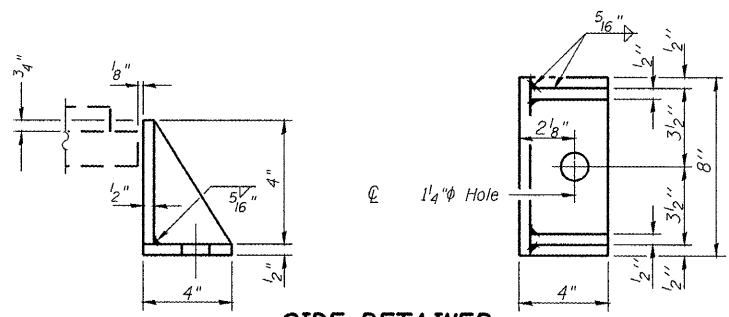
PINTLE

FIXED BEARING

BILL OF MATERIAL

Item	Unit	Total
▲ Elastomeric Bearing Assembly Type I	Each	14
▲ Anchor Bolts 1"	Each	56

▲ For Information Only



SIDE RETAINER

Equivalent rolled angle with stiffeners will be allowed in lieu of welded plates.

ILLINOIS DEPARTMENT OF TRANSPORTATION
BEARING DETAILS
I 55 OVER MACOUPIN CREEK
F.A.I. ROUTE 55 - SEC. (68-4)F
MONTGOMERY COUNTY
STATION 1066+03.18
STRUCTURE NO. 068-0038 N.B.
STRUCTURE NO. 068-0039 S.B.
DATE: 04-08
REVISED:
DRAWN BY: MLO
CHECKED BY: PBB

I-2-E1

11-1-06