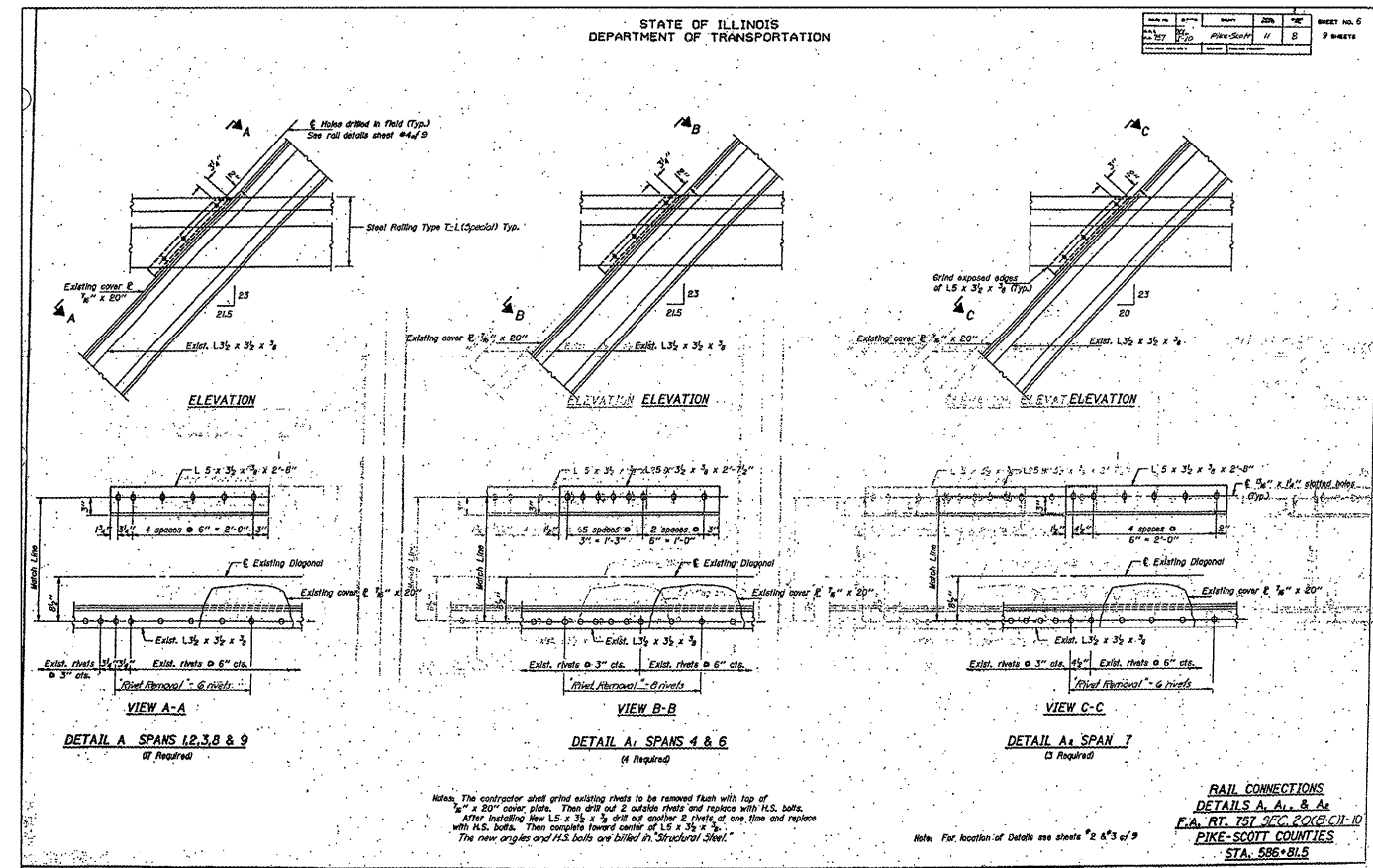
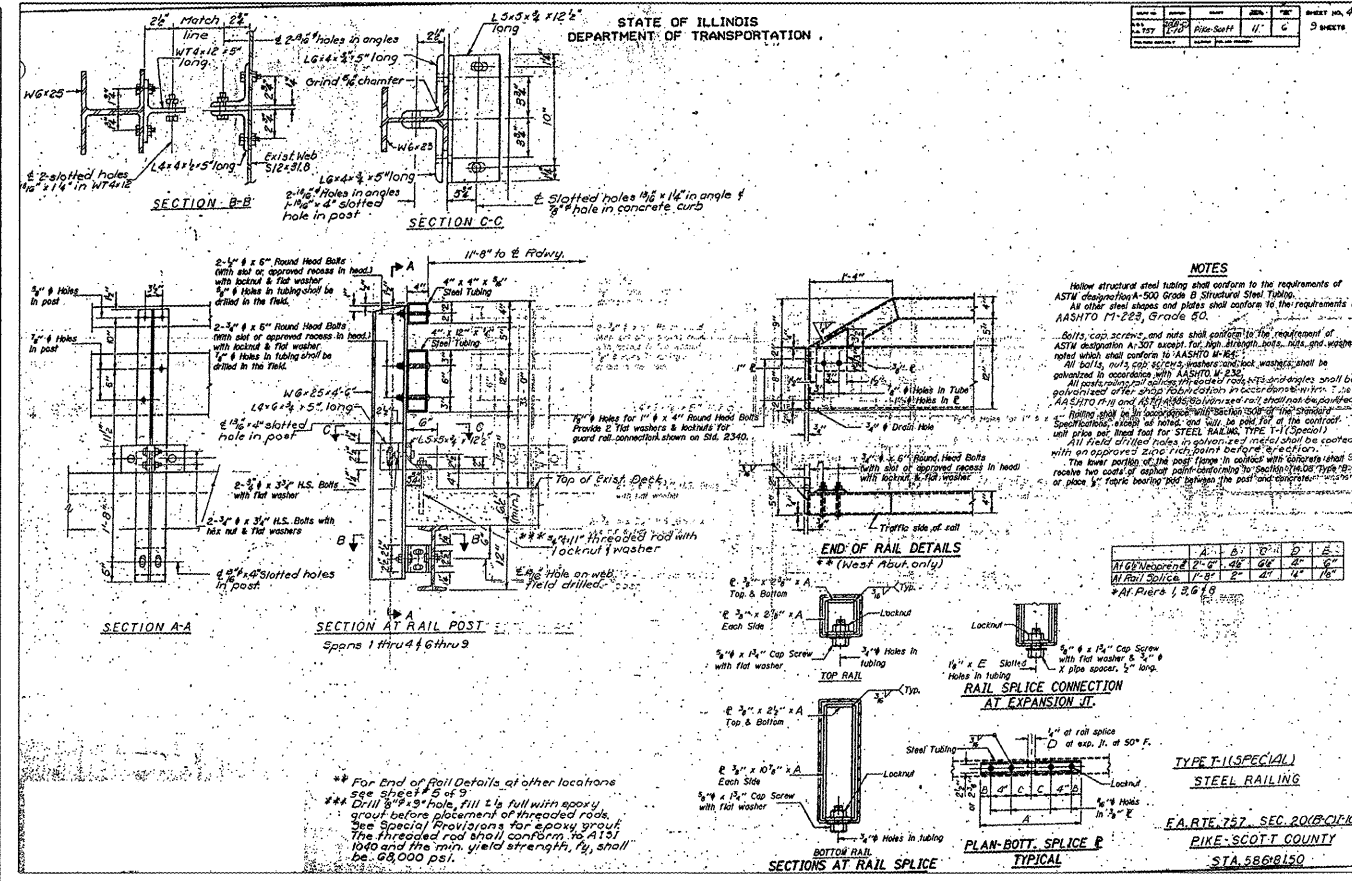
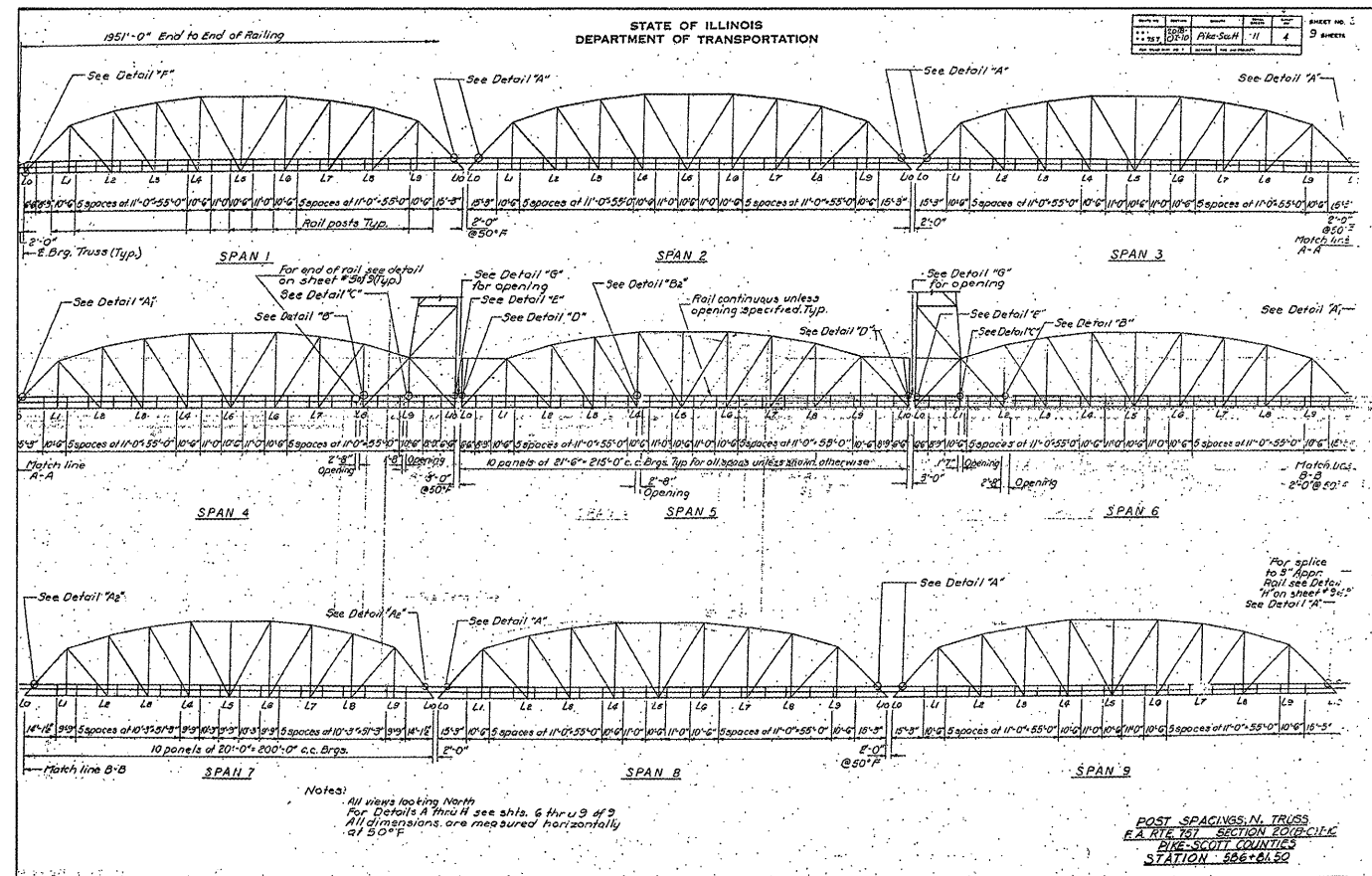


STATE OF ILLINOIS
DEPARTMENT OF TRANSPORTATION



EXISTING RAILING DETAILS

FOR INFORMATION ONLY

EXISTING BRIDGE DETAILS
ILLINOIS ROUTES 100 & 106 OVER
ILLINOIS RIVER
PUBLIC WATERS

SHEET NO. 22 OF 25 SHEETS	F.A.P. RTE. 757	SECTION 20BR-2	COUNTY SCOTT/PIKE	TOTAL SHEETS 30	SHEET NO. 27
	SN 086-0001		CONTRACT NO. 72C39		
FED. ROAD DIST. NO. _ ILLINOIS FED. AID PROJECT					