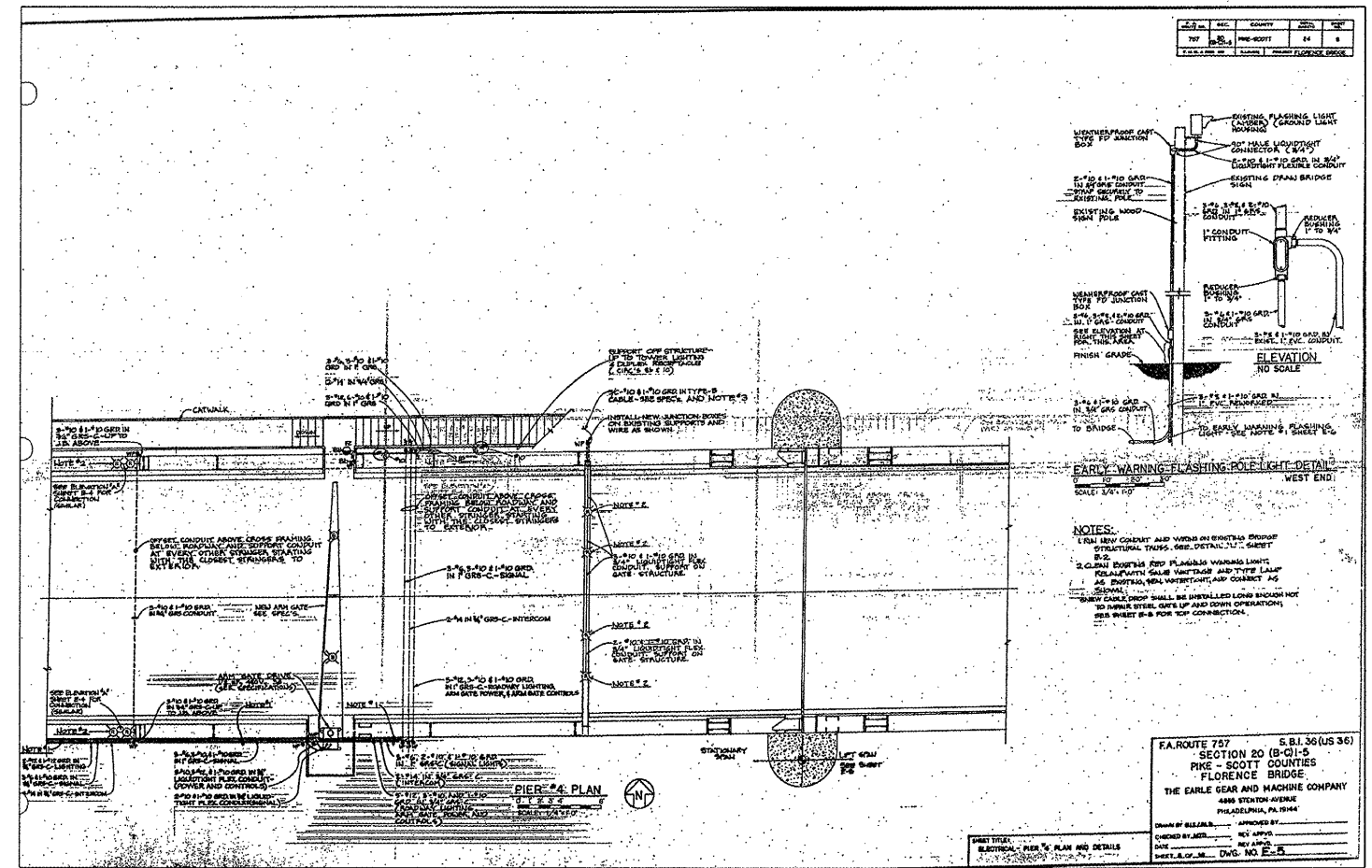
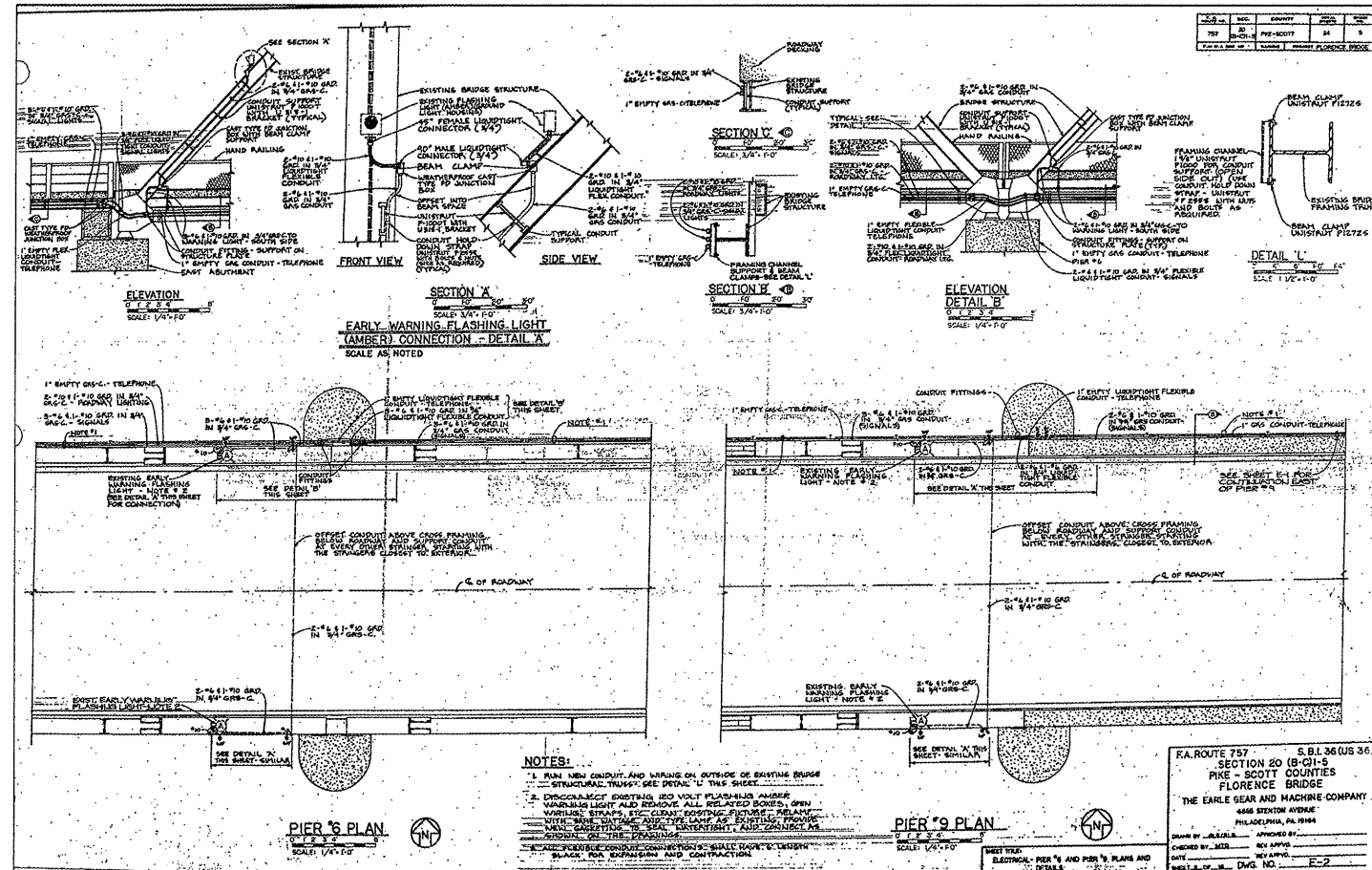


STATE OF ILLINOIS
DEPARTMENT OF TRANSPORTATION



EXISTING ELECTRICAL DETAILS

FOR INFORMATION ONLY

EXISTING BRIDGE DETAILS
ILLINOIS ROUTES 100 & 106 OVER
ILLINOIS RIVER
PUBLIC WATERS

SHEET NO. 24 OF 25 SHEETS	F.A.P. RTE.	SECTION	COUNTY	TOTAL SHEETS	SHEET NO.
	757	20BR-2	SCOTT/PIKE	30	29
	SN 086-0001		CONTRACT NO. 72C39		
FED. ROAD DIST. NO. -		ILLINOIS	FED. AID PROJECT		