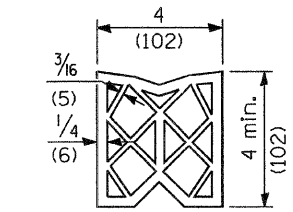
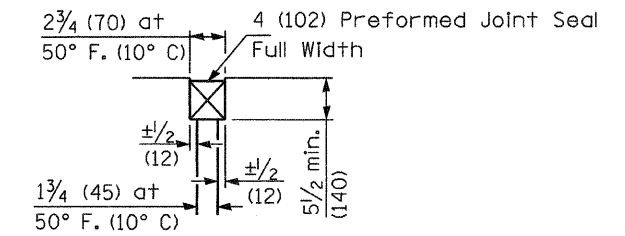


SECTION C-C

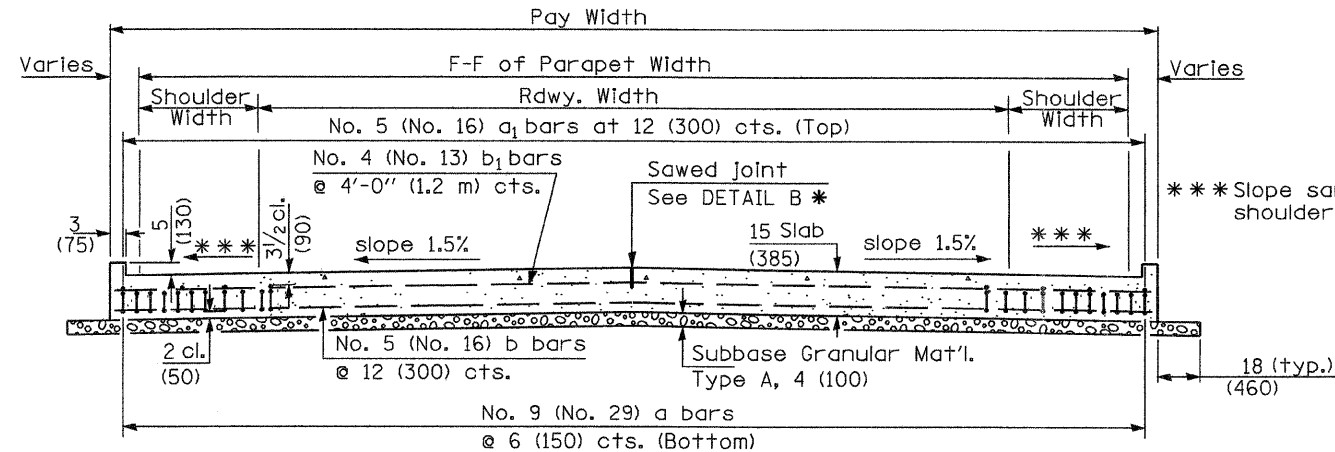
① Stagger No. 9 (No. 29) a bars as shown on plan - full width



PREFORMED JOINT SEAL



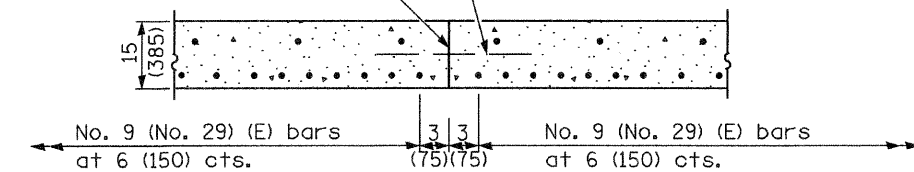
DETAIL A



SECTION D-D

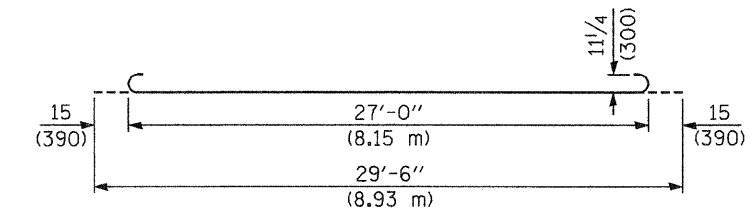
(See Plan for Dimensions not shown)

Longitudinal Construction Joint in accordance with details shown on Standard 420001.

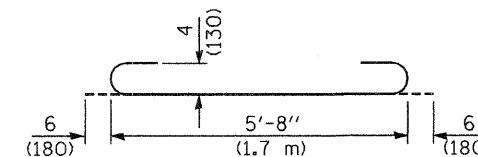


OPTIONAL LONGITUDINAL CONSTRUCTION JOINT

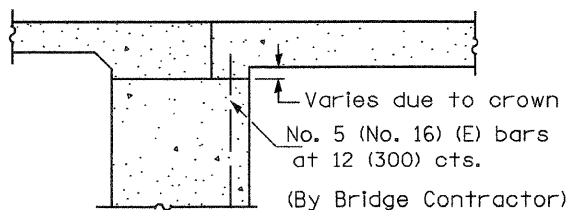
As approved by the Engineer, the Contractor may elect to reduce the widths of pour by use of the Optional Longitudinal Construction Joint shown. Joints shall be located at the edge of a traffic lane.



BAR a

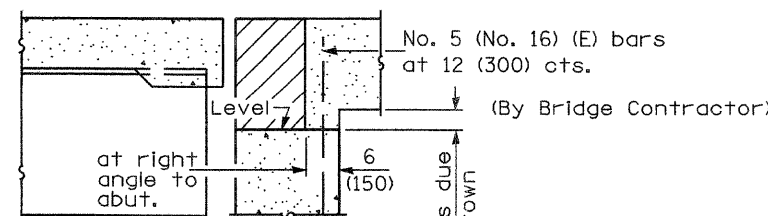


BAR a₂



SECTION E-E

(Integral Abutments)



SECTION E-E

(Jointed Abutments)

DESIGN STRESSES
 f_y = 60,000 p.s.i. (400 MPa)
 f'c = 3,500 p.s.i. (24 MPa)
 n = 8.5

BRIDGE APPROACH PAVEMENT

(Sheet 3 of 4)

Contract 74107

Sheet 95C.

Added Sheet 12-31-08

Illinois Department of Transportation

APPROVED January 1, 2008
Ralph E. Anderson
 ENGINEER OF BRIDGES AND STRUCTURES

APPROVED January 1, 2008
Ken E. He...
 ENGINEER OF DESIGN AND ENVIRONMENT

ISSUES 1-1-97