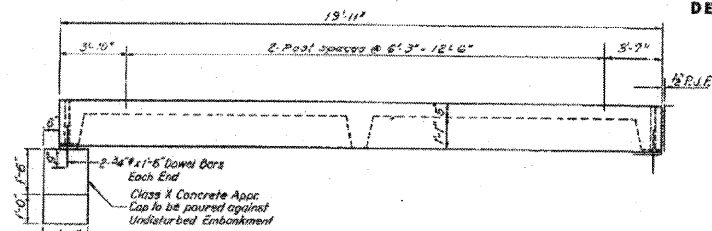
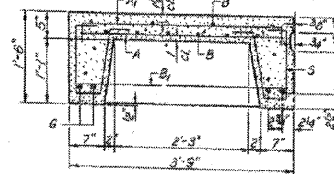
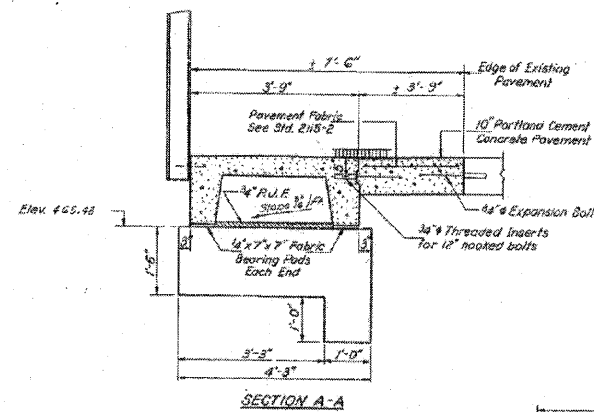


STATE OF ILLINOIS
DEPARTMENT OF TRANSPORTATION

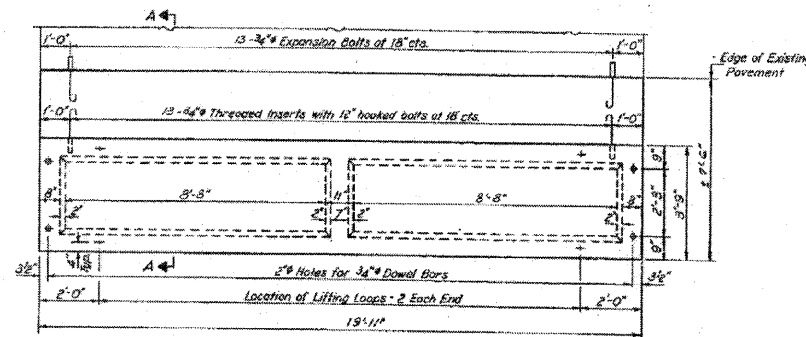
DATE	REVISION	BY	NO.	SHEET NO.
11-26-08	68R-1	CLAY	8	5



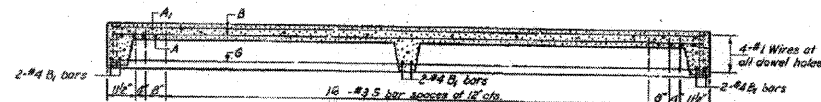
ELEVATION
Note: Furnish 2 Right Hand Units & 2 Left Hand Units



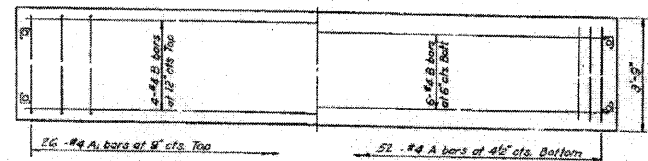
SECTION THRU PRECAST UNIT



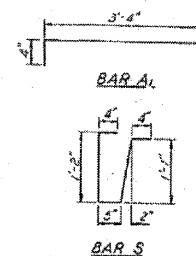
PARTIAL PLAN OF APPROACH



LONGITUDINAL SECTION



SLAB REINFORCEMENT



BAR LIST - ONE UNIT

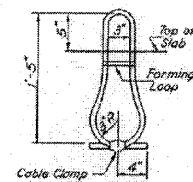
Bar	No.	Size	Length	Shape
A	52	#4	3'-3"	
A1	26	#4	4'-0"	
B	10	#4	19'-2"	
B1	6	#4	3'-6"	
G	4	#10	19'-2"	
S	22	#3	3'-4"	U

NOTES

Unless otherwise approved by the Engineer, lifting loops shall be 6" 6x19 class wire rope with fiber core and shall have a minimum ultimate strength of 18,700 lbs. Loops shall be burned off after slab has been erected. Notes shall be drilled and anchor dowels grouted in place. Cost of reinforcement and accessories cast into the slab unit, bearing pads, furnishing, drilling for, placing and grouting anchor dowels and 3/4" hooked bolts is included in Unit bid price for "Precast Concrete Bridge Slab." The Precast Concrete Bridge Slab shall be erected and aligned with the exterior face of the exterior Deck Beam after Deck Beams are in final position.

BILL OF MATERIAL

Item	Unit	Quantity
Precast Concrete Bridge Slab	Sq Ft	299
Portland Cement Concrete Pavement (CC)	Sq Yds	3.3
Pavement Fabric	Sq Yds	3.3
Expansion Bolts 3/4" Each	Each	52
Class X Concrete	CUYDS	1.6



LIFTING LOOP DETAIL

STRESSES

$f_c = 4,500$ psi
 $f_s = 18,000$ psi
 $f_s = 20,000$ psi
n = 8

APPROACH DETAILS
K.A.R.R. (2-BL. RTES) OVER GROVE CREEK
SECTION 6 BR-1
CLAY COUNTY
STA. 14+74.1

LOADING HS-20

DESIGNED	Simon O. Strunk	EXAMINED	MARCO S. 10/12
CHECKED	Wesley Pence	PASSED	PRINCE OF GEORGIA AND SOUTH CAROLINA
DRAWN	Simon O. Strunk	APPROVED	PRINCE OF GEORGIA
CHECKED	W		

W-AP-1 20' Precast Appr Unit (RT-L) (11-18-79)