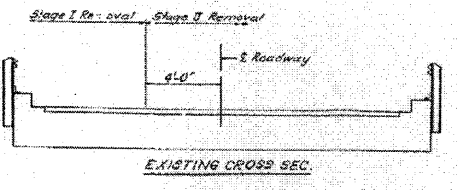
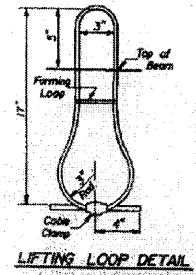
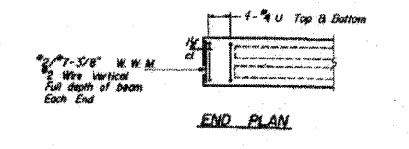
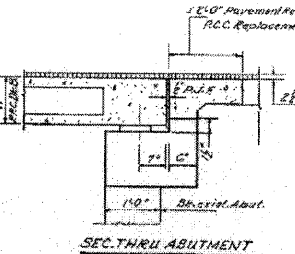
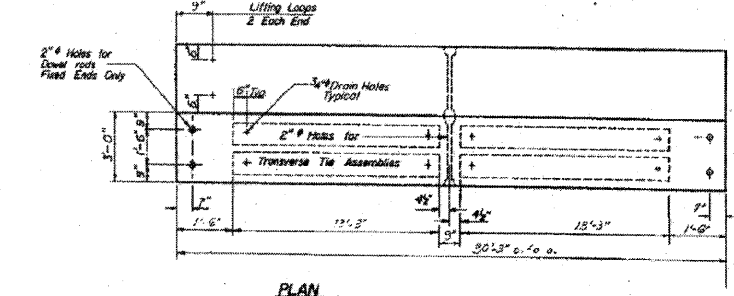
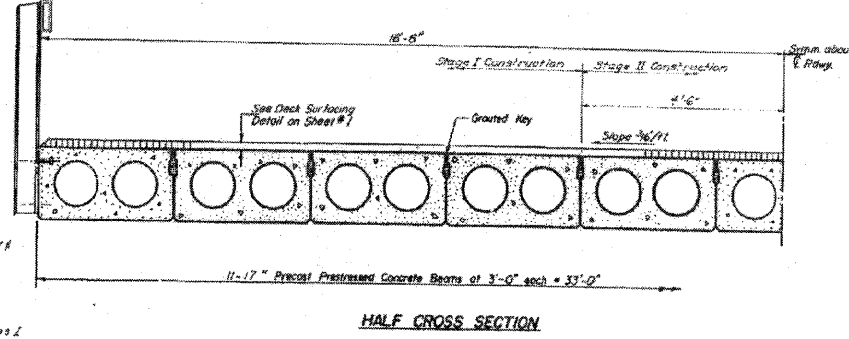
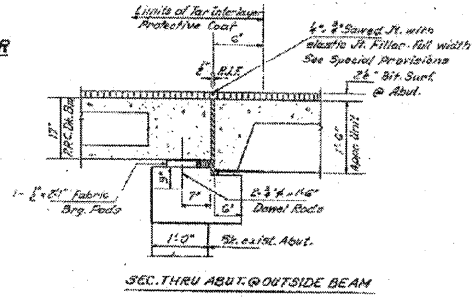
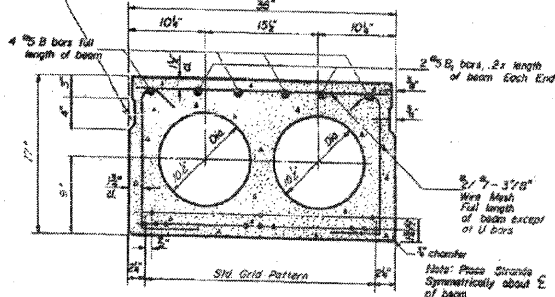
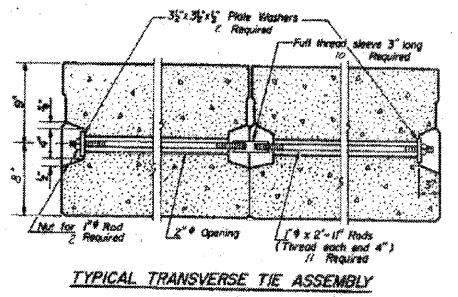
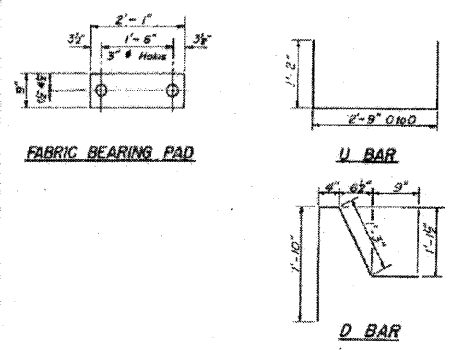


| FAP RTE             | SECTION    | COUNTY           | TOTAL SHEETS | SHEET NO. |
|---------------------|------------|------------------|--------------|-----------|
| 328                 | (6BR-1)B-1 | CLAY             | 109          | 21        |
| STA.                |            | TO STA.          |              |           |
| FED. ROAD DIST. NO. | ILLINOIS   | FED. AID PROJECT |              |           |

STATE OF ILLINOIS  
DEPARTMENT OF TRANSPORTATION

|          |     |      |       |           |
|----------|-----|------|-------|-----------|
| DATE     | BY  | CHKD | APP'D | SHEET NO. |
| 11-22-04 | DAJ | B    | G     | 5         |



**GENERAL NOTES**

1. Prestressing steel shall be non-polarized high strength, stress-relieved 7-wire strand. The nominal diameter shall be 7/16" and the nominal cross-sectional area shall be 0.109 sq. in. Lifting loops shall be 2" diameter, 6x19 class wire rope with fiber core and shall have a minimum ultimate tensile strength of 15,700 lbs.

2. The 1/2" rods in the transverse tie assembly shall be tightened to a snug fit and the threads set. Packers that receive transverse tie bar on outside beam shall be filled with grout after transverse tie assembly is in place.

3. Longitudinal shear keys shall be packed with a very dry mix of 2:1 sand and P.C. mortar. After beams have been erected, holes for the dowel anchors shall be drilled into the sub-structure and the anchor sleeves shall be grouted in place.

4. Dowel rods shall be ASTM A-305 or ASTM A-615. Transverse tie rods shall be ASTM A-306, Grade 70-80.

5. Where fabrication the transverse tie assembly (tie rods, nuts, washers and sleeves) shall be hot-dipped galvanized in accordance with A.S.T.M. Designation: A-153.

6. Cost of reinforcement and accessories cast into the beam, of bearing posts, of armor angles, and of grouting longitudinal shear keys is included in unit price bid for Precast Prestressed Concrete Deck Beams.

**BILL OF MATERIAL**

| Bar   | No. | Size    | Length | Shape |
|---|-----|---------|--------|-------|
| Precast Prestressed Concrete Deck Beams (11') |     | Sq. Ft. | 996    |       |

**SUPERSTRUCTURE**  
F.A.P. 261281 65/DOVER GROVE CR.  
SECTION 6BR-1  
CLAY COUNTY  
STA. 1414+01

|          |                  |          |               |
|----------|------------------|----------|---------------|
| DESIGNED | Simon A. Vetrone | EXAMINED | Mason S. 10/2 |
| CHECKED  | Simon A. Vetrone | PASSED   |               |
| DRAWN    | Simon A. Vetrone | APPROVED |               |
| CHECKED  | JR               |          |               |