

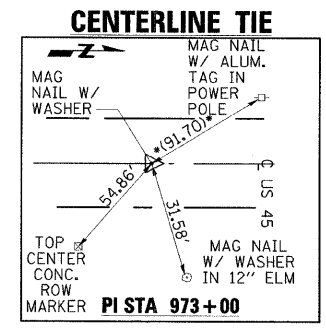
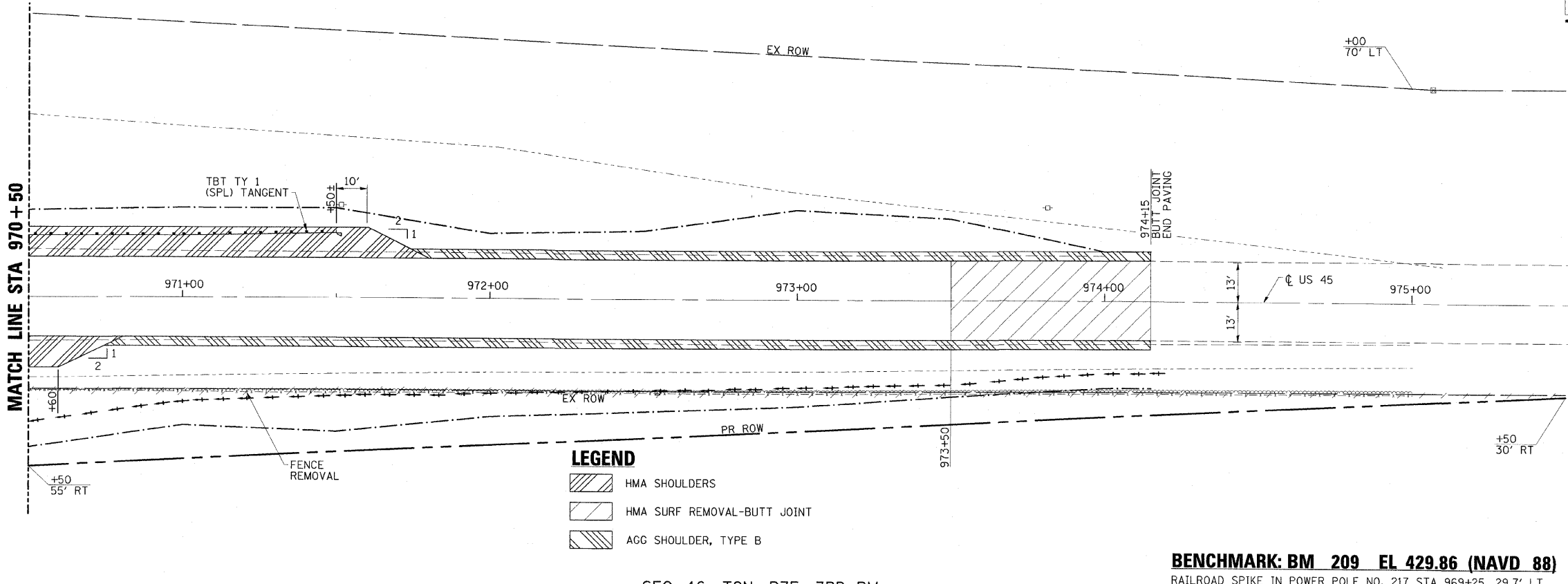
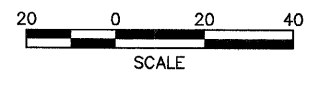


DATE	
BY	
REVISION	
NO.	
DATE	
BY	
REVISION	
NO.	

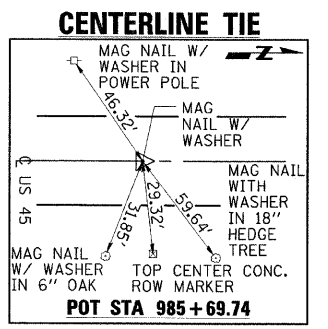
DATE	
BY	
REVISION	
NO.	
DATE	
BY	
REVISION	
NO.	

SEC. 17, T2N, R7E, 3RD PM

CONTRACT NO. 74107			
FAP RTE	SECTION	COUNTY	TOTAL SHEETS
328		CLAY	109
STA. 970+50		TO STA. 975+00	
FED. ROAD DIST. NO.	ILLINOIS	FED. AID PROJECT	
*8BR-3, 8BR-4IB-1			

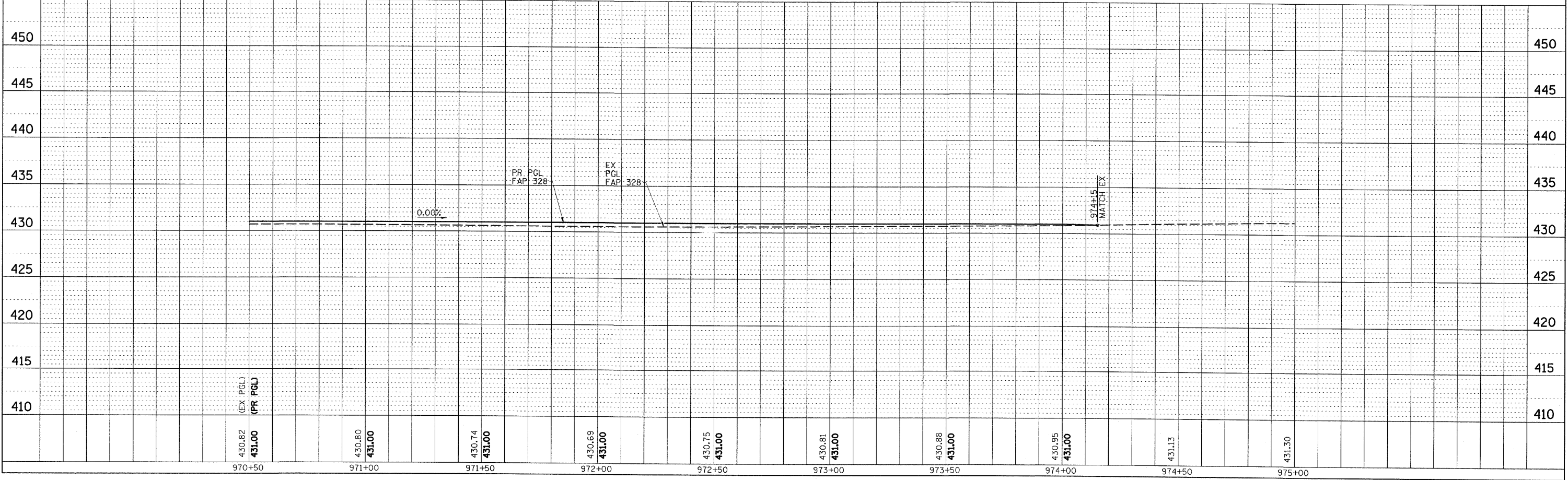


- LEGEND**
- HMA SHOULDERS
 - HMA SURF REMOVAL-BUTT JOINT
 - AGG SHOULDER, TYPE B



BENCHMARK: BM 209 EL 429.86 (NAVD 88)
RAILROAD SPIKE IN POWER POLE NO. 217 STA 969+25, 29.7' LT

SEC. 16, T2N, R7E, 3RD PM



FAP RTE 328 (US 45) PLAN AND PROFILE
STA 970+50 TO STA 975+00