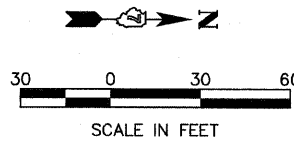


FAP RTE	SECTION	COUNTY	TOTAL SHEETS	SHEET NO.
328		CLAY	109	60
STA. 963+00		TO STA. 972+00		
FED. ROAD DIST. NO.		ILLINOIS	FED. AID PROJECT	
•(8BR-3, 8BR-4)B-1				



LEGEND

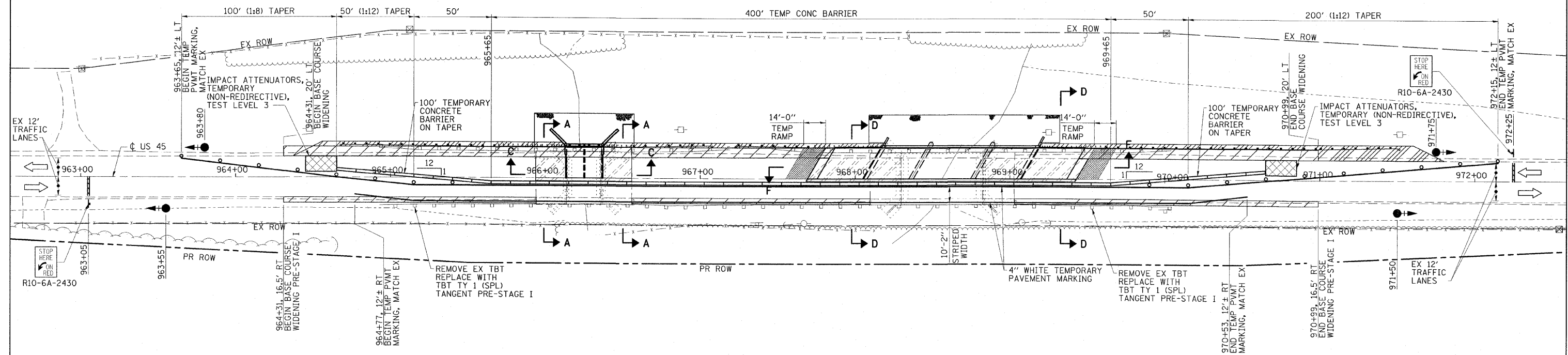
- ← TRAFFIC SIGNAL WITH BACKPLATE, SIGNAL DIRECTION INDICATED
- ▨ TEMPORARY RAMP
- ▨ PAVEMENT REMOVAL
- ▨ BASE COURSE WIDENING, 10"
- ▨ HMA SHOULDER

SCHEDULE OF QUANTITIES

TEMPORARY CONCRETE BARRIER		
STATION TO	STATION	FEET
964+65	970+65	600
		TOTAL 600
TEMPORARY BRIDGE TRAFFIC SIGNALS - 1 EACH		
TEMPORARY RUMBLE STRIPS - 6 EACH		
IMPACT ATTENUATORS, TEMPORARY (NON-REDIRECTIVE), TEST LEVEL 3 - 2 EACH		

GENERAL NOTES

- TRAFFIC CONTROL SHALL BE ERECTED AS SHOWN AND ACCORDING TO "TRAFFIC CONTROL AND PROTECTION, STANDARD 701321."
- SEE SPECIAL PROVISIONS FOR ADDITIONAL TRAFFIC CONTROL REQUIREMENTS.
- COORDINATE LOCATION OF SIGNALS WITH FINAL WORK AS DIRECTED BY THE ENGINEER.
- CONSTRUCT TEMPORARY RUMBLE STRIPS AT LOCATIONS SHOWN ON STANDARD 701321.
- THE DIMENSION SHOWN ON THE WIDTH RESTRICTION SIGN (W12-I102(O)-48) SHOWN ON STANDARD 701321 SHALL BE 10'-9" FOR STAGE I CONSTRUCTION.
- THE EXISTING TBT AT THE NE & SE SIDE MUST BE REMOVED AND REPLACED WITH NEW TBT TY 1 (SPECIAL) TANGENT PRIOR TO SHIFTING TRAFFIC TO THE STAGE I LANE.
- THE EXISTING PRECAST APPROACH UNITS AND ADJACENT PAVEMENT UNDER THE STAGE I TRAFFIC LANE SHALL BE SUBSEALED PRIOR TO IMPLEMENTING STAGE I TRAFFIC. SEE DETAIL ON SHEET 64.



ESCA
CONSULTANTS, INC.

DESIGNED BY:	DAJ	03/08
DRAWN BY:	HAS	03/08
CHECKED BY:	MTD	05/08
APPROVED BY:	RDP	08/08

STAGE I CONSTRUCTION
US 45 OVER SEMINARY CREEK & OVERFLOW
FAP ROUTE 328 - SECTIONS (8BR-3, 8BR-4)B-1
CLAY COUNTY