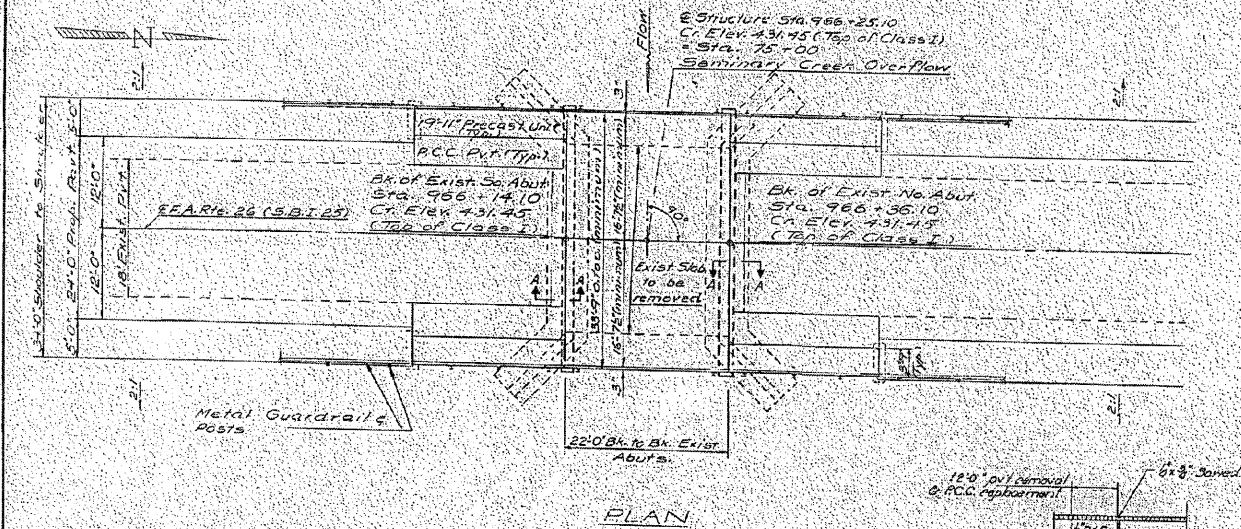
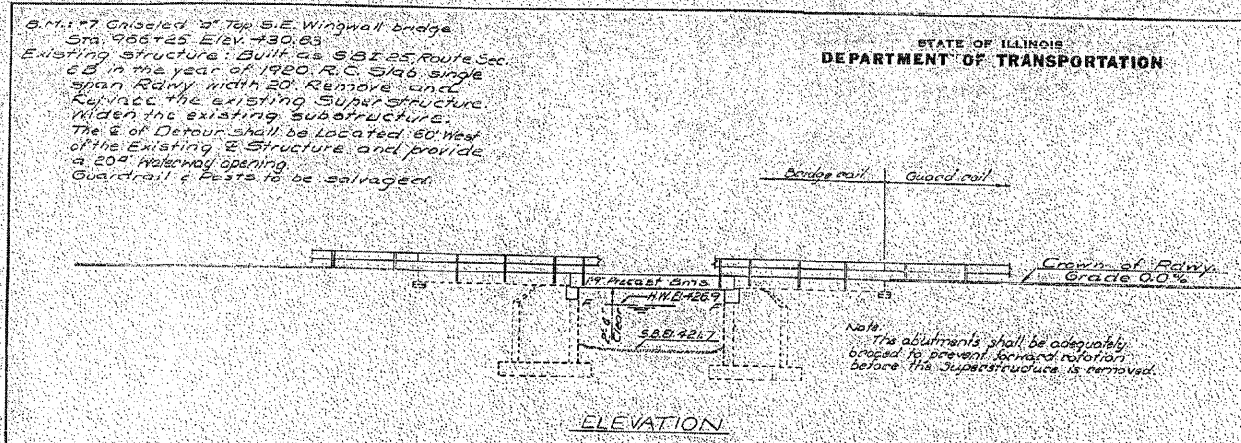


| FAP RTE | SECTION | COUNTY | TOTAL SHEETS | SHEET NO. |
|---------------------|------------|----------|------------------|-----------|
| 328 | (BBR-3)B-1 | CLAY | 109 | 73 |
| STA. | | TO STA. | | |
| FED. ROAD DIST. NO. | | ILLINOIS | FED. AID PROJECT | |



STATION 966+25.10
REBUILT BY
STATE OF ILLINOIS
FA. RT. 26 SEC. 8BR-3

LOADING HS 80
NAME PLATES
See Std. 2113

DESIGNED BY: [Signature]
CHECKED BY: [Signature]
DRAWN BY: V.F.F.
APPROVED BY: [Signature]

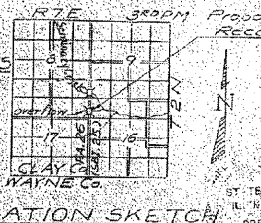
EXAMINED BY: [Signature]
PARED BY: [Signature]
APPROVED BY: [Signature]

WATERWAY INFORMATION
Drainage Area: 0.5 sq. miles
Character: Present opening 95.50 FT.
Proposed opening 75.50 FT.
Required opening 95.50 FT.
H.W. Elev. 426.90
Flow: 9.00 cfs

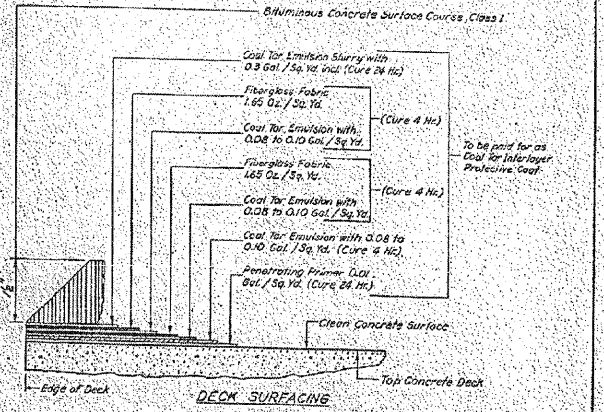
FIELD UNITS
f_c = 4000 psi
f_s = 20000 psi (Reinf.)
n = 10
V_c = 90 psi

PRECAST UNITS
f_c = 4500 psi
f_s = 18000 psi
n = 8

LOADING HS 20-44
Allow 25% extra for future W.S.
Design Spec. various AASHTO 1969
as applicable.



| | | | | |
|-------------|---------|--------|--------------|-----------|
| PROJECT NO. | SECTION | COUNTY | TOTAL SHEETS | SHEET NO. |
| 26-88-3 | CLAY | 21 | 7 | 5 SHEETS |



GENERAL NOTES

All reinforcement bars shall be lapped 24 diameters unless otherwise shown.

It shall be the responsibility of the Contractor to verify all dimensions and conditions existing in the field prior to construction and ordering of materials. An alternate strand pattern using Extra High Strength Prestressing Strand (270 ksi.) is permitted.

Expansion bolts shall consist of self-drilling expansion anchors and 1/2" hooked bolts. Hooked bolts shall extend a minimum of 12" into new concrete, unless otherwise shown.

Shoulder transition to wingwall shall be shaped with broken concrete. Cast incidental.

TOTAL BILL OF MATERIAL

| Item | Unit | Super | Sub | Total |
|--|----------|-------|------|-------|
| Bifunctional Concrete Surface Coating, Class 1 | Sq. Yds. | 7 | | 7 |
| Portland Cement Concrete Pavement (10') | Sq. Yds. | 33 | | 33 |
| Pavement Fabric | Sq. Yds. | 33 | | 33 |
| Concrete Removal | Cu Yds. | | 8 | 8 |
| Expansion Bolts (3/8") | Each | 32 | | 32 |
| Class X Concrete | Cu Yds. | 1.0 | 14.1 | 15.1 |
| Precast Concrete Bridge Slab | Sq. Ft. | 1039 | | 1039 |
| Steel Rolling, Type 5 | Lbs. | 128 | | 128 |
| Reinforcement Bars | Lbs. | | 2630 | 2630 |
| Removal of Existing R.C.C. Replacement, Type 2 (10') | Sq. Yds. | 0 | | 0 |
| Removal of Existing Superstructures | Each | 1 | | 1 |
| Coat for Interlayer Protective Coat | Sq. Yds. | 00 | | 00 |
| Name Plates | Each | 1 | | 1 |

GENERAL PLAN & ELEVATION
FA. RT. 26 (SBI 25) OVER OVERFLOW SEMINARY CREEK
FA. RT. 26 (SBI 25) SEC. 8BR-3
CLAY COUNTY
STA. 966+25.10