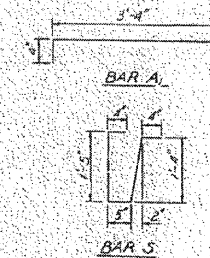
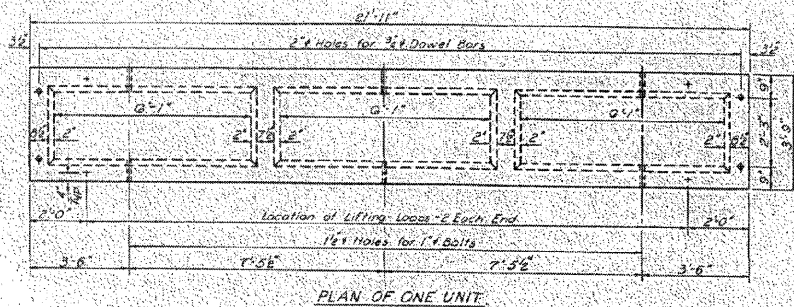
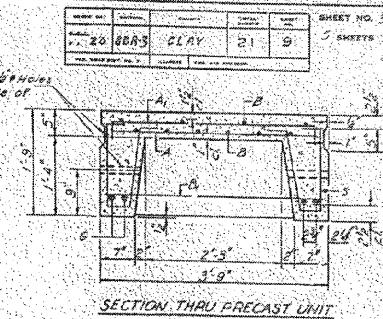
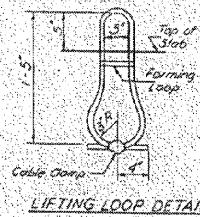
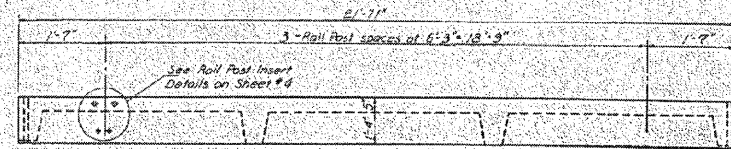
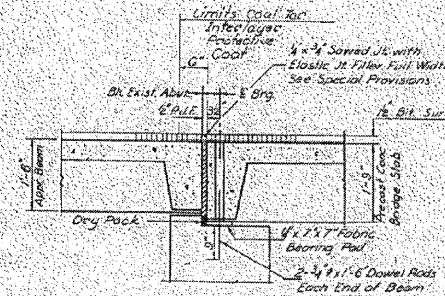
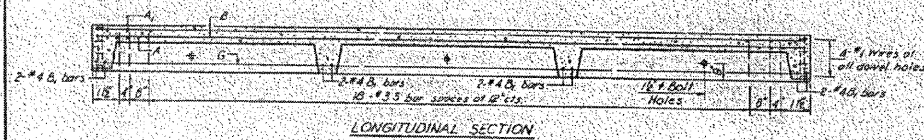


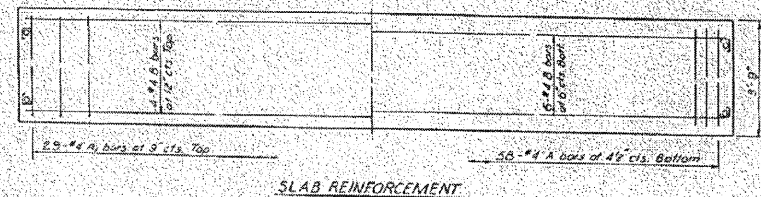
STATE OF ILLINOIS
DEPARTMENT OF TRANSPORTATION



Bar	No	Size	Length	Shape
A	28	#4	3'-9"	
A1	28	#4	4'-0"	
B	10	#4	2'-0"	
B1	8	#4	3'-6"	
G	4	#10	2'-8"	
S	28	#3	3'-10"	(r)

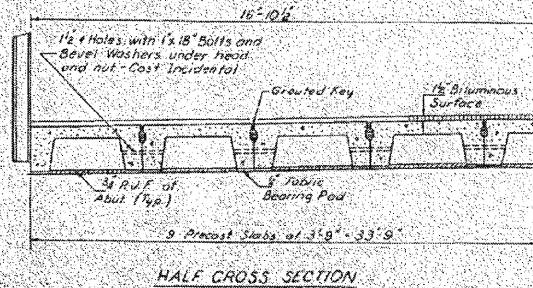


NOTES
 Unless otherwise approved by the Engineer, lifting loops shall be 6 x 6 x 1/8 cross wire rope with fiber core and shall have a minimum ultimate strength of 18,000 lbs. Loops shall be burned cut after slab has been erected.
 Holes shall be drilled and anchor dowels grouted in place.
 Cast of reinforcement and accessories cast into the slab with bearing pads, finishing, drilling for, placing and grouting anchor dowels is included in Unit bid price for "Precast Concrete Bridge Slab."



BILL OF MATERIAL

Item	Unit	Quantity
Precast Concrete Bridge Slab	Sq. Ft.	1750
Removal of Existing Superstructure	Each	1



SUPERSTRUCTURE
 EA AT 20 SEC B. 21-5
 CLAY COUNTY
 STA 28812.5 TO 28812.10

DESIGNED: [Signature]
 CHECKED: [Signature]
 DRAWN: [Signature]
 EXAMINED: [Signature]
 PASSED: [Signature]
 APPROVED: [Signature]

STRESSES
 16,450 psi
 16,100 psi
 14,100 psi
 11,100 psi