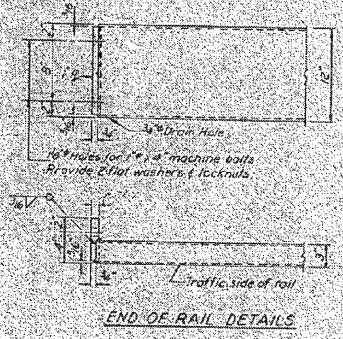
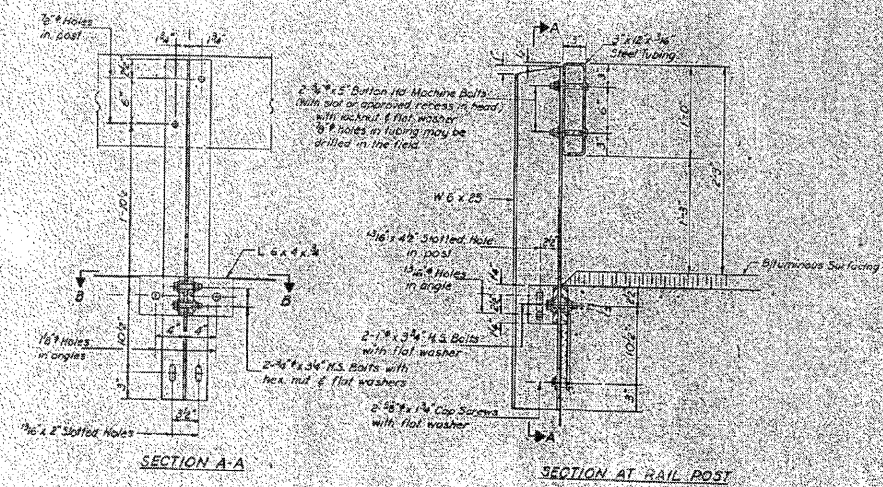
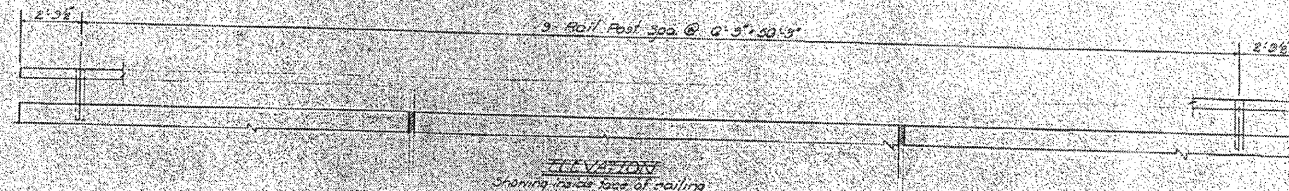


FAP RTE	SECTION	COUNTY	TOTAL SHEETS	SHEET NO.
328	(8BR-3)B-1	CLAY	109	76
STA.		TO STA.		
FED. ROAD DIST. NO.		ILLINOIS	FED. AID PROJECT	

STATE OF ILLINOIS
DEPARTMENT OF TRANSPORTATION

DATE	BY	PROJECT	TITLE	SHEET NO.
11-26-08	JBP/RS	CLAY	21	10
SHEETS				



NOTES

Hollow structural steel tubing shall conform to the requirements of ASTM designation A-500 Grade B or A-501 Structural Steel Tubing.

All other steel struts and plates shall conform to the requirements of ASTM designation A-36 except posts shall conform to ASTM A-441.

Bolts, cap screws, and nuts shall conform to the requirements of ASTM designation A-307 except for high strength bolts, nuts and washers which shall conform to ASTM designation A-325.

All bolts, nuts, cap screws, washers and lock washers shall be galvanized in accordance with ASTM designation A-153.

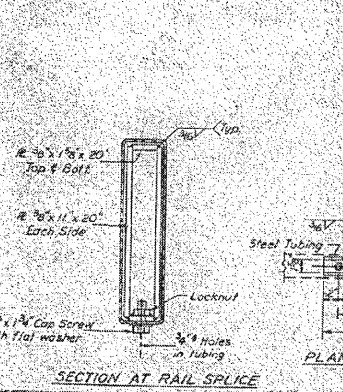
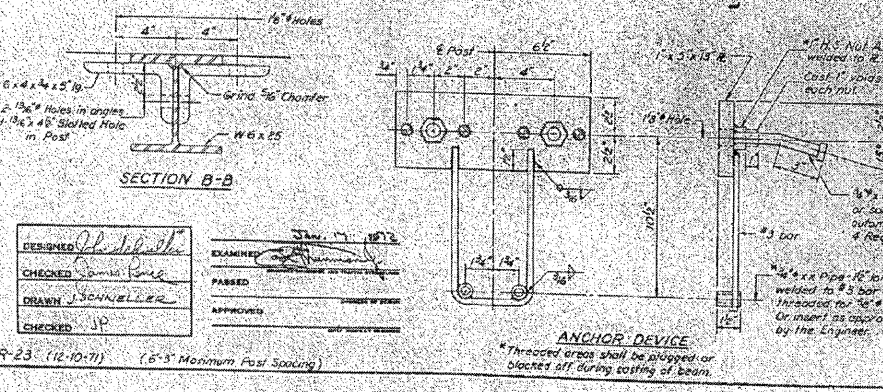
All posts, railing, rail spikes, anchor devices and angles shall be galvanized after steel fabrication in accordance with ASTM designation A-123 and A-305. Galvanized rail shall not be painted.

Railing shall be in accordance with Section 508 of the Standard Specifications, except as noted, and shall be paid for at the contract unit price per linear foot for STEEL RAILING, TYPE S.

All field drilled holes shall be coated with an approved zinc rich paint before erection.

The lower portion of the post flange in contact with concrete shall receive two coats of asphalt paint conforming to Section 714.08, Type B or place 6" fabric bearing pad between the post and concrete.

The 1/2" high strength bolts used to connect the 6x4x4 angles to the post shall be tightened in accordance with Article 710.11 of the Standard Specifications. The 1/2" high strength bolts connecting the angles to the concrete shall be tightened to a snug fit and given an additional 1/8 turn.



BILL OF MATERIAL

Item	Unit	Quantity
Steel Railing, Type S	Lin. Ft.	109

TYPE S STEEL RAILING
FAP RT. 328 - SEC. 650-3
CLAY COUNTY
JTA 2007270

R-23 (12-10-71) 1.6'-5" Maximum Post Spacing
"Threaded areas shall be plugged or plugged off during casting of beam."