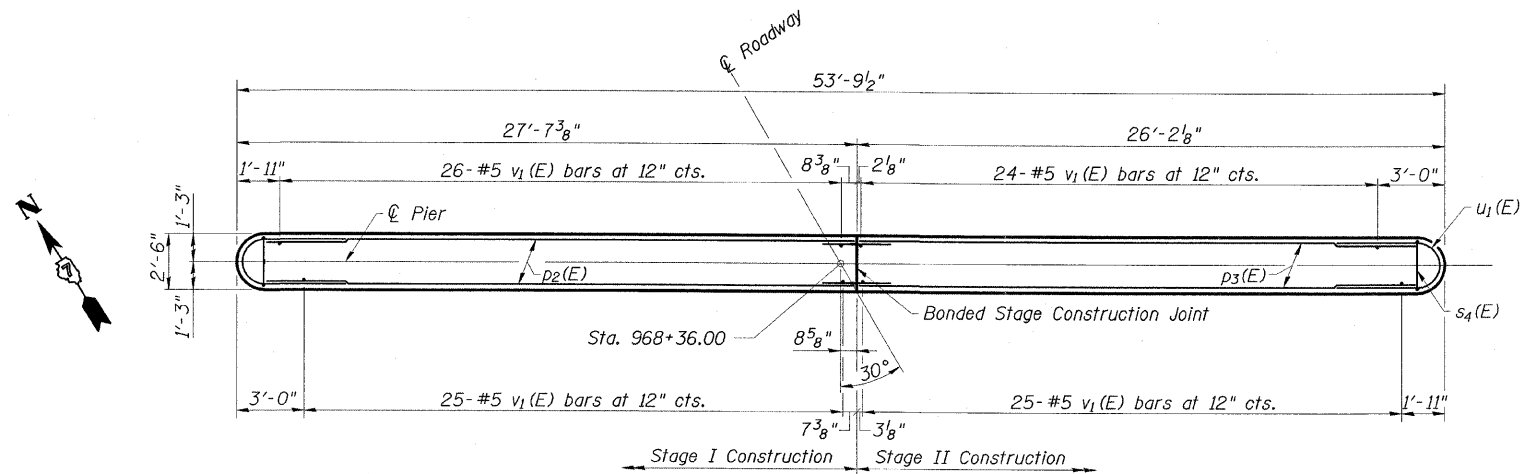
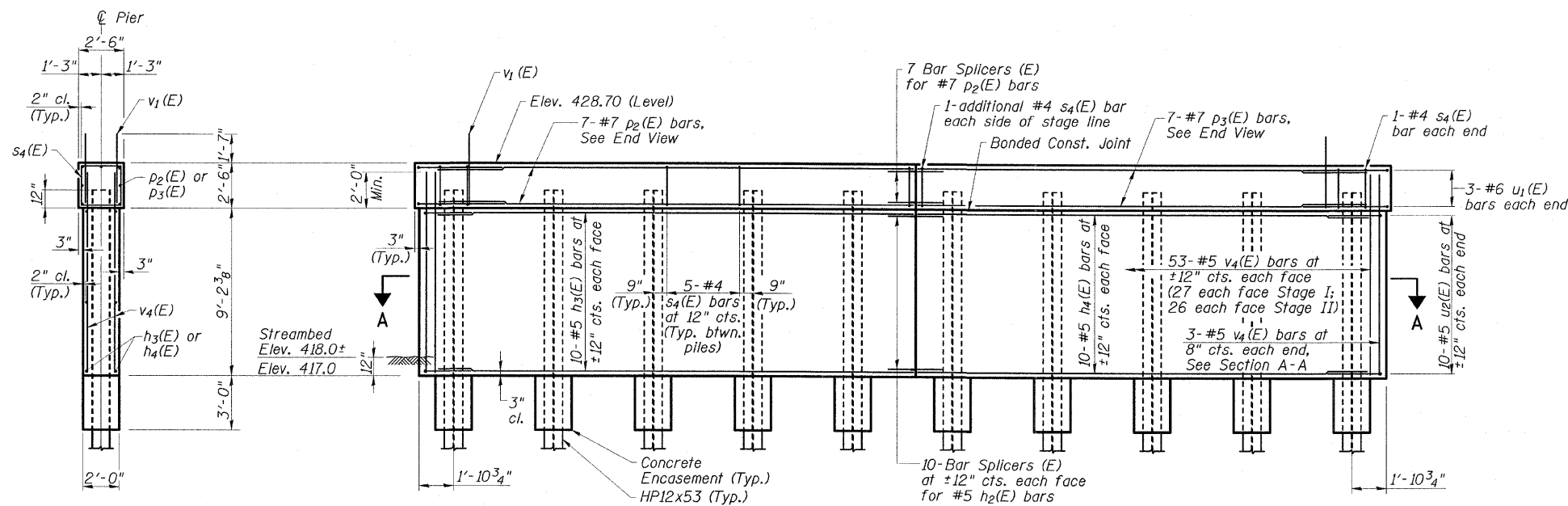


STATE OF ILLINOIS
DEPARTMENT OF TRANSPORTATION

ROUTE NO.	SECTION	COUNTY	SHEET	SHEET	SHEET NO. 13 18 SHEETS
FAP 328	*	CLAY	109	90	
FED. ROAD DIST. NO.	ILLINOIS	FED. AID PROJECT	CONTRACT NO. 74107		
			* (88R-4)B-1		

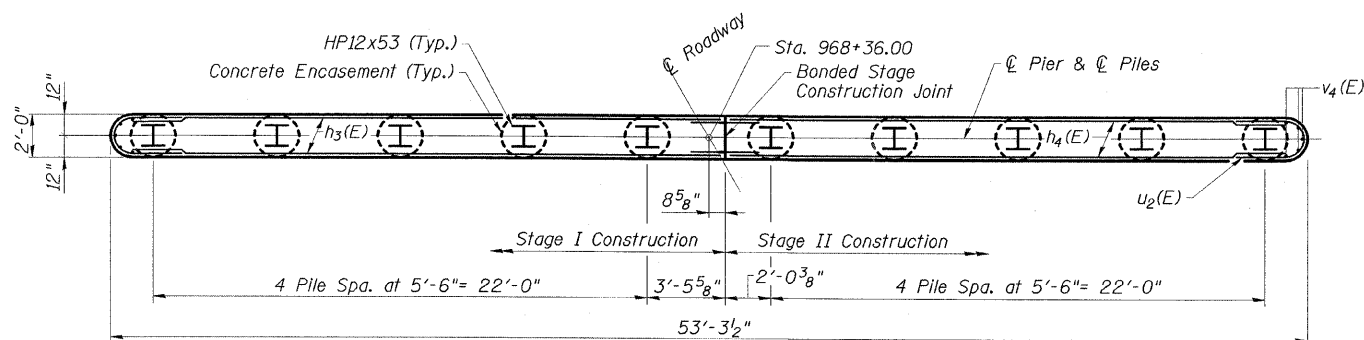


TOP PLAN



ELEVATION
(Looking North)

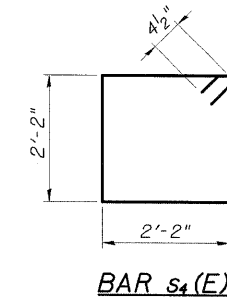
END VIEW



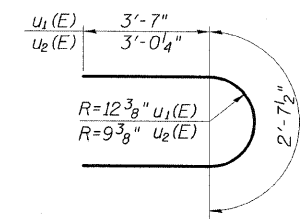
SECTION A-A

PIER 1
BILL OF MATERIAL

Bar No.	Size	Length	Shape
h3(E)	#5	26'-3"	—
h4(E)	#5	24'-9"	—
p2(E)	#7	26'-3"	—
p3(E)	#7	24'-9"	—
s4(E)	#4	9'-5"	□
u1(E)	#6	10'-7"	U
u2(E)	#5	8'-8"	U
v1(E)	#5	3'-11"	—
v4(E)	#5	11'-0"	—
Structure Excavation	Cu. Yd.	35	
Concrete Structures	Cu. Yd.	48.4	
Reinforcement Bars, Epoxy Coated	Pound	4075	
Furnishing Steel Piles, HP12x53	Lin. Ft.	792.0	
Driving Piles	Lin. Ft.	792.0	
Test Pile, Steel HP12x53	Each	1	
Concrete Encasement	Cu. Yd.	3.5	
Underwater Structure Excavation Protection Location 1	Each	1	



BAR s4(E)



BARS u1(E) & u2(E)

For details of piles and Concrete Encasement, see Sheet 16 of 18.
For details of Bar Splicers, see Sheet 15 of 18.

PILE DATA

Type: Steel HP12x53
Nominal Required Bearing: 419 kips
Factored Resistance Available: 209.5 kips
Estimated Length: 88.0'
No. Production Piles: 9
No. Test Piles: 1

PIER 1
US 45 OVER SEMINARY CREEK
FAP ROUTE 328 - SECTION (8BR-4)B-1
CLAY COUNTY
STATION 968+56.00
STRUCTURE NO. 013-0043

ESCA
CONSULTANTS, INC.

DESIGNED BY: MTD 04/08
DRAWN BY: DWH 04/08
CHECKED BY: DAJ 05/08
APPROVED BY: RDP 08/08