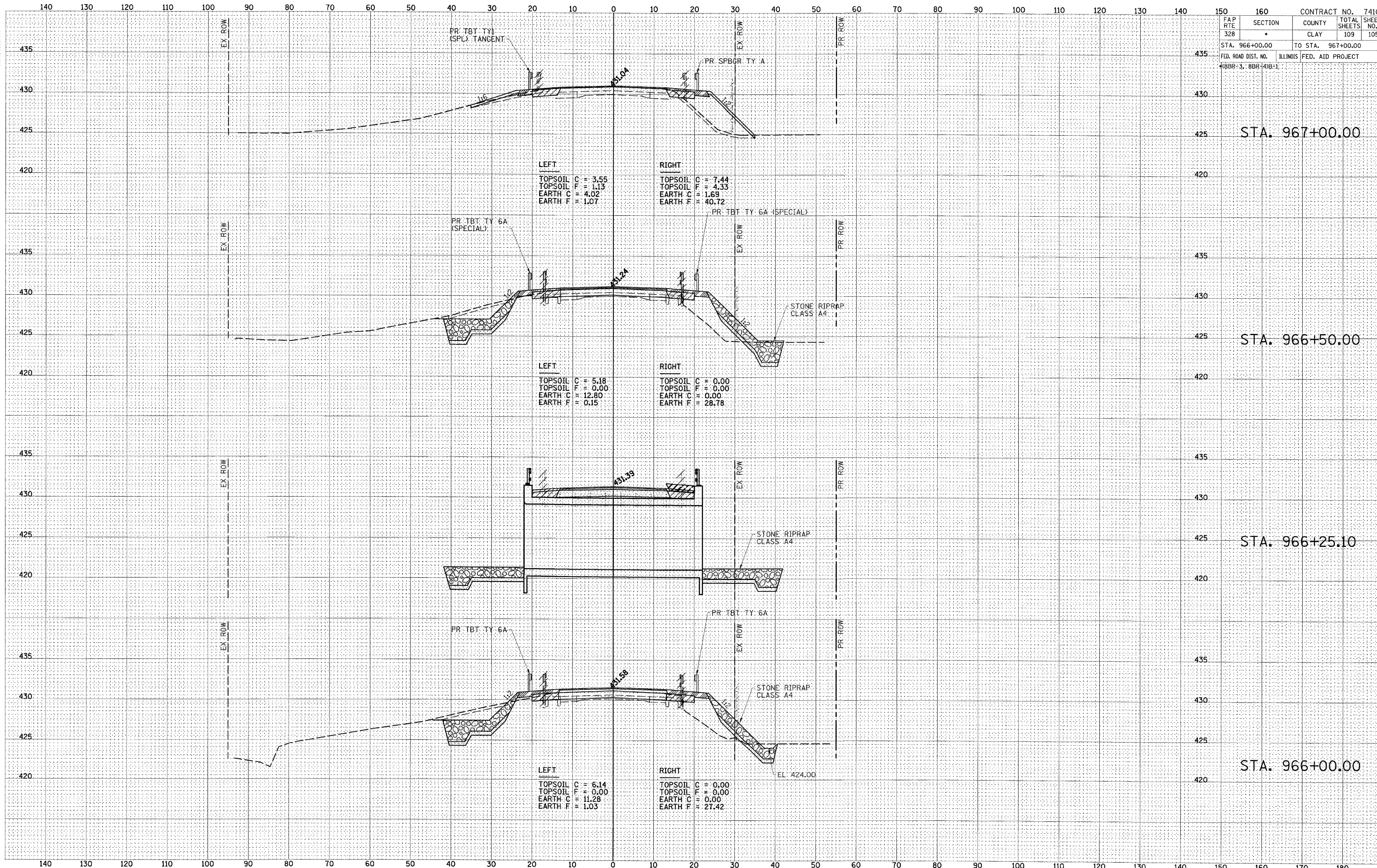




DATE	
BY	
FINAL SURVEY	
NOTE BOOK	
NO.	

DATE	
BY	
ORIGINAL SURVEY	
NOTE BOOK	
NO.	



CONTRACT NO. 74107	
FAP RTE 328	SECTION *
COUNTY CLAY	TOTAL SHEETS 109
STA. 966+00.00	TO STA. 967+00.00
FED. ROAD DIST. NO. ILLINOIS	FED. AID PROJECT

STA. 967+00.00

STA. 966+50.00

STA. 966+25.10

STA. 966+00.00