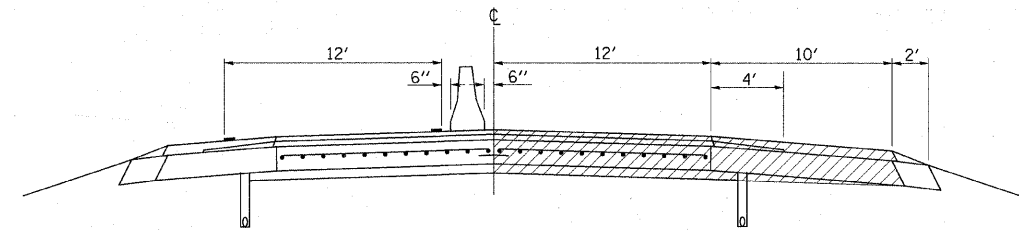
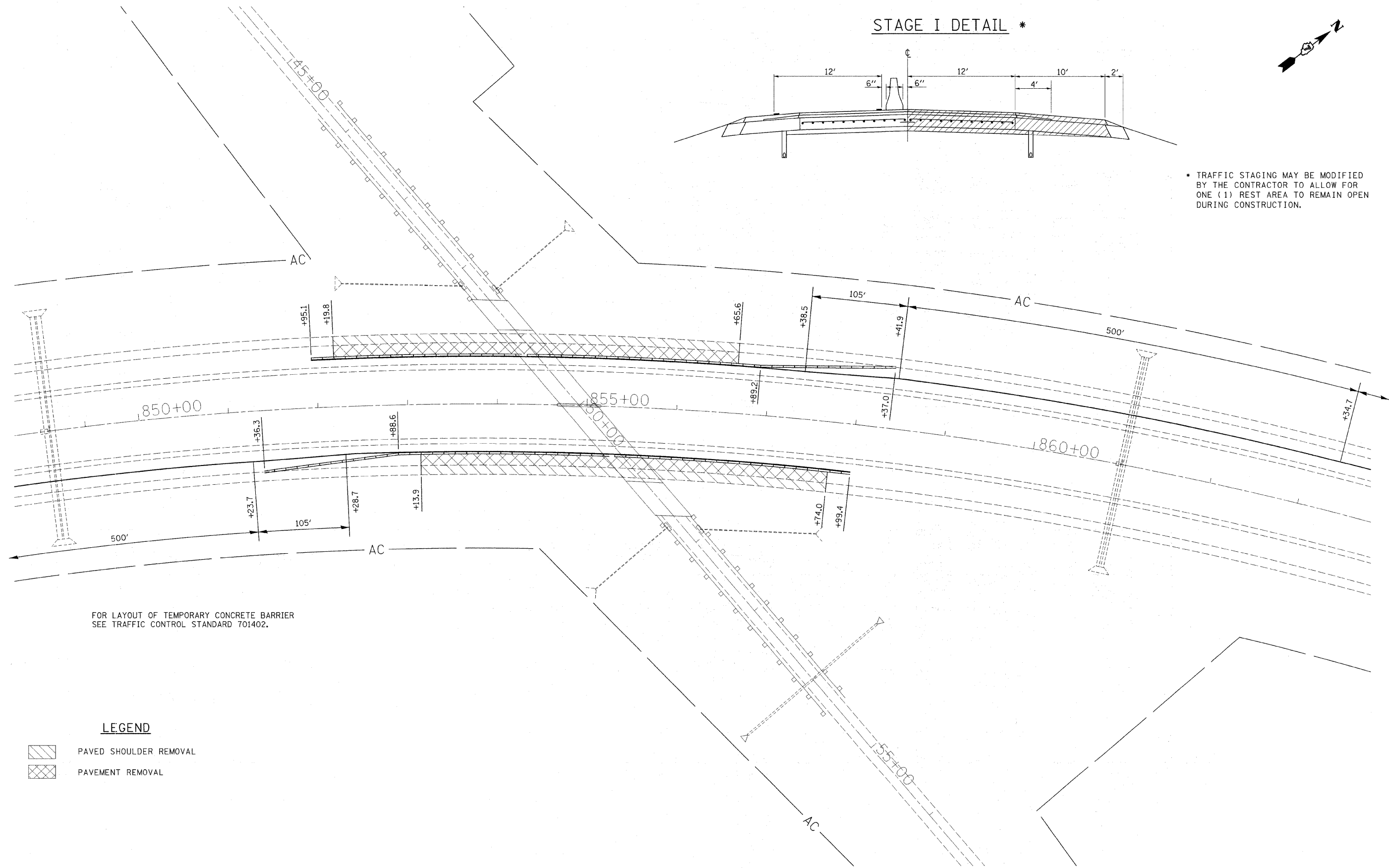


STAGE I DETAIL \*



\* TRAFFIC STAGING MAY BE MODIFIED BY THE CONTRACTOR TO ALLOW FOR ONE (1) REST AREA TO REMAIN OPEN DURING CONSTRUCTION.



FOR LAYOUT OF TEMPORARY CONCRETE BARRIER SEE TRAFFIC CONTROL STANDARD 701402.

LEGEND

- PAVED SHOULDER REMOVAL
- PAVEMENT REMOVAL

FILE NAME =	USER NAME = swartzrw	DESIGNED -	REVISED -	<b>STATE OF ILLINOIS DEPARTMENT OF TRANSPORTATION</b>	<b>STAGE I FOR TYPE IV, 10" PATCH</b>		F.A.I. RTE.	SECTION	COUNTY	TOTAL SHEETS	SHEET NO.
cs:\pw\work\VPWIDOT\SWARTZRW\dms50694\stage1.74171.dgn	stage1.74171.dgn	DRAWN -	REVISED -				72	(58,74)(66,67)RS-1	MACON	38	24
PLOT SCALE = 50.0000' / IN.		CHECKED -	REVISED -				CONTRACT NO. 74171				
PLOT DATE = 10/9/2008		DATE -	REVISED -				FED. ROAD DIST. NO.	ILLINOIS FED. AID PROJECT			
				SCALE: 50	SHEET NO. 2 OF 3 SHEETS	STA. 849+00 TO STA. 862+00					